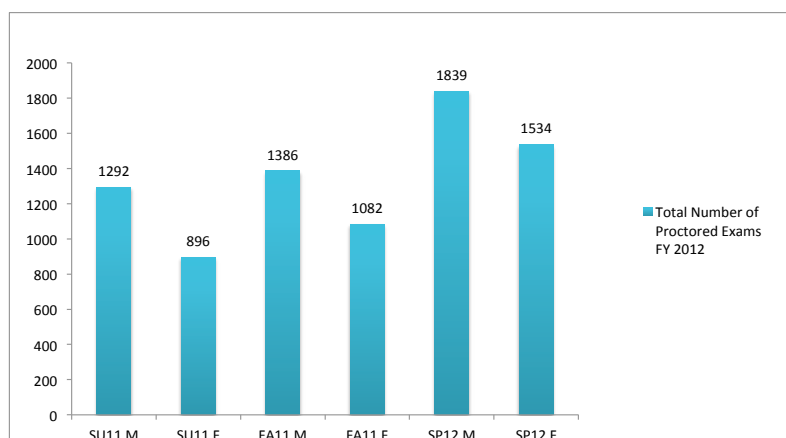
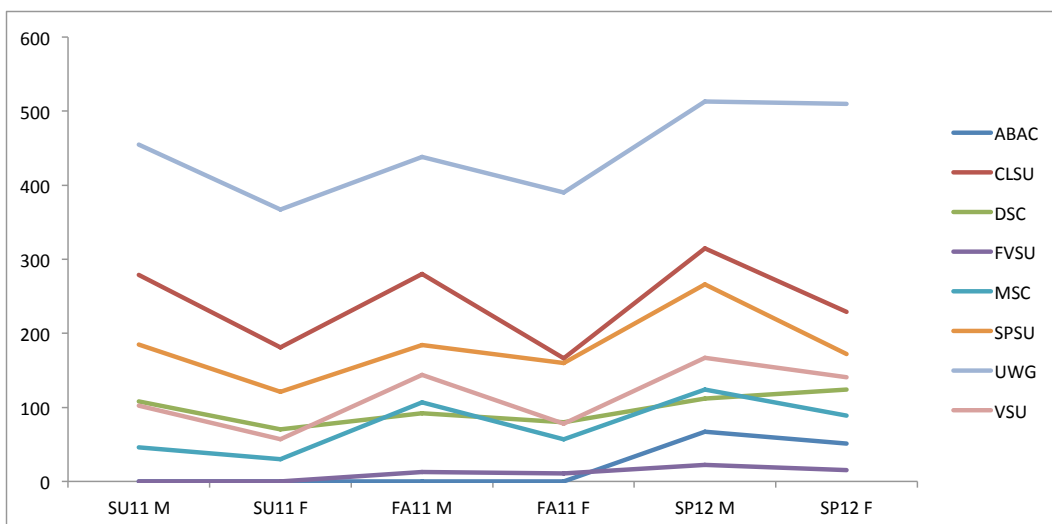


## Total Number of Proctored Tests FY 2012



## Affiliate, Other & Non-Affiliate Test Trend Analysis

These numbers were generated by the number of verified tests taken.



## Revenue Generated by Affiliate Testing Centers

These numbers were generated by multiplying the number of verified tests taken by the proctor fee per institution. eCore affiliate institutions retain all revenue generated through proctored exams at their institution.

Testing Site	Proctor Fee	SU11	FA11	SP12
ABAC	\$25	\$ -	\$ -	\$2,950.00
CLSU	\$20	\$9,200.00	\$8,920.00	\$10,880.00
DSC	\$25	\$4,450.00	\$4,300.00	\$5,900.00
FVSU	\$25	\$ -	\$600.00	\$925.00
MSC	\$15	\$1,125.00	\$2,460.00	\$3,195.00
SPSU	\$25	\$7,650.00	\$8,600.00	\$10,950.00
UWG	\$10	\$8,220.00	\$8,280.00	\$10,230.00
VSU	\$20	\$3,180.00	\$4,440.00	\$6,160.00
Other and NON Affiliate Universities	\$25	\$4,675.00	\$6,700.00	\$11,400.00