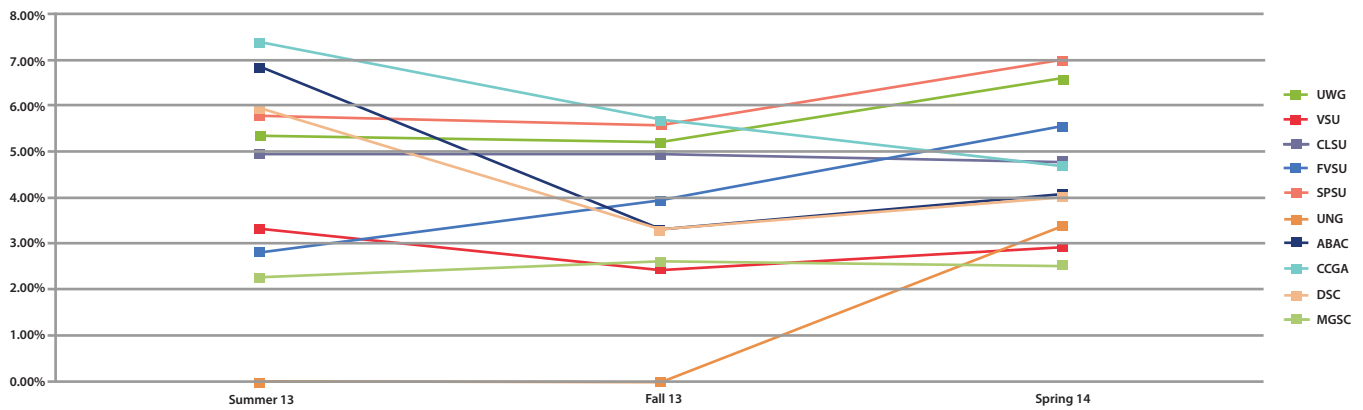


eCore to USG Student Headcount for FY 2014

The following represents a comparison of the eCore unduplicated headcount by term and the USG census student headcount by term for FY 2014



Affiliate	Summer 2013 eCore Unduplicated HCT	Summer 2013 USG Census Student HCT	Summer 2013 eCore Pct of Student HCT	Fall 2013 eCore Unduplicated HCT	Fall 2013 USG Census Student HCT	Fall 2013 eCore Pct of Student HCT	Spring 2014 eCore Unduplicated HCT	Spring 2014 USG Census Student HCT	Spring 2014 eCore Pct of Student HCT
Comprehensive Universities									
UWG	263	4891	5.38%	622	11929	5.21%	737	11179	6.59%
VSU	174	5223	3.33%	293	11885	2.47%	331	11265	2.94%
State Universities									
CLSU	172	3444	4.99%	363	7261	5.00%	334	6976	4.79%
FVSU	24	851	2.82%	126	3180	3.96%	158	2840	5.56%
SPSU	146	2516	5.80%	367	6549	5.60%	437	6238	7.01%
UNG	0	2604	0.00%	0	15455	0.00%	492	14613	3.37%
State Colleges									
ABAC	64	936	6.84%	112	3394	3.30%	127	3132	4.05%
CCGA	81	1096	7.39%	170	2987	5.69%	134	2839	4.72%
DSC	105	1769	5.94%	166	5015	3.31%	180	4466	4.03%
MGSC	59	2594	2.27%	208	7989	2.60%	193	7661	2.52%