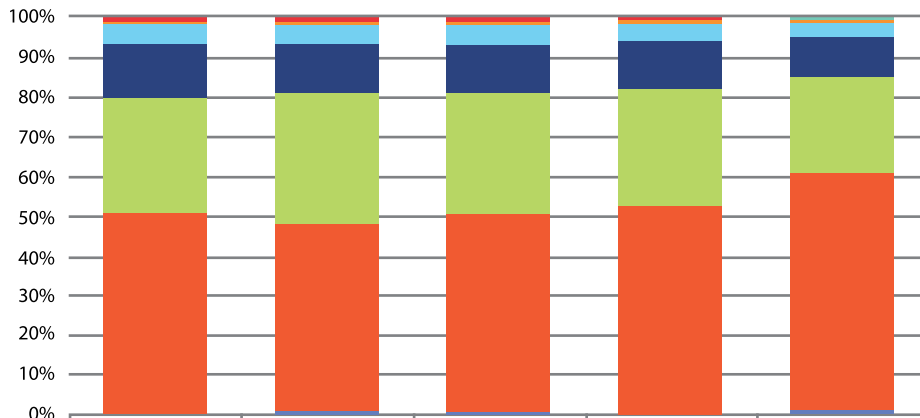
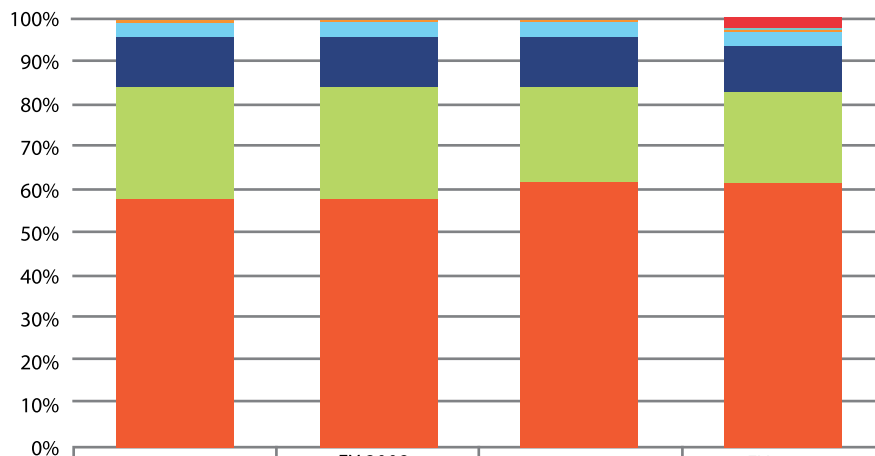


## Historical Age of eCore Students

The following chart shows the ages of eCore students for FY 2007-2015. These data were provided by the participating affiliates.



	FY2011	FY2012	FY2013	FY2014	FY2015
Unknown	13	11	29	4	0
Over 65	2	2	3	6	10
56-65	18	42	31	40	68
46-55	184	243	285	325	393
36-45	418	700	696	776	944
26-35	950	1654	1703	1972	2434
18-24	1735	2475	2824	3486	5804
Below 18	12	32	39	29	151
Total	3332	5159	5610	6638	9804



	FY 2007	FY 2008	FY 2009	FY 2010
Unknown	0	1	1	63
Over 65	0	0	2	2
56-65	21	15	15	14
46-55	142	108	110	94
36-45	367	350	365	300
26-35	869	838	702	606
18-25	1941	1786	1900	1672
Below 18	12	5	4	6
Total	3352	3103	3099	2757