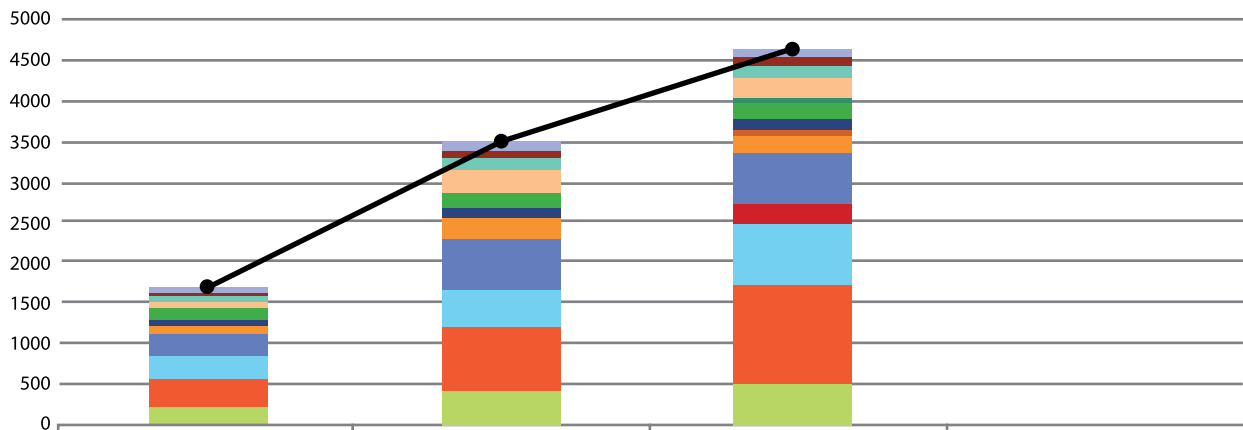


## The eCore Student's Affiliate Institution - Unduplicated View

The following chart represents the unduplicated eCore headcount by affiliate, by semester, for FY 2015. The unduplicated headcount is determined just after drop/add each term.



	Summer 2014	Fall 2014	Spring 2015	Total
ABAC	78	115	122	315
ASU	34	86	93	213
CCGA	55	142	152	349
CLSU	93	273	249	615
CSU	0	0	13	13
DAR	0	0	33	33
DSC	148	204	214	566
FVSU	70	143	137	350
GHC	0	0	63	63
MGSC	98	243	216	557
SPSU	268	617	628	1513
SSU	0	0	256	256
UNG	301	454	750	1505
UWG	344	802	1237	2383
VSU	194	410	469	1073
● Total	1683	3489	4632	9804