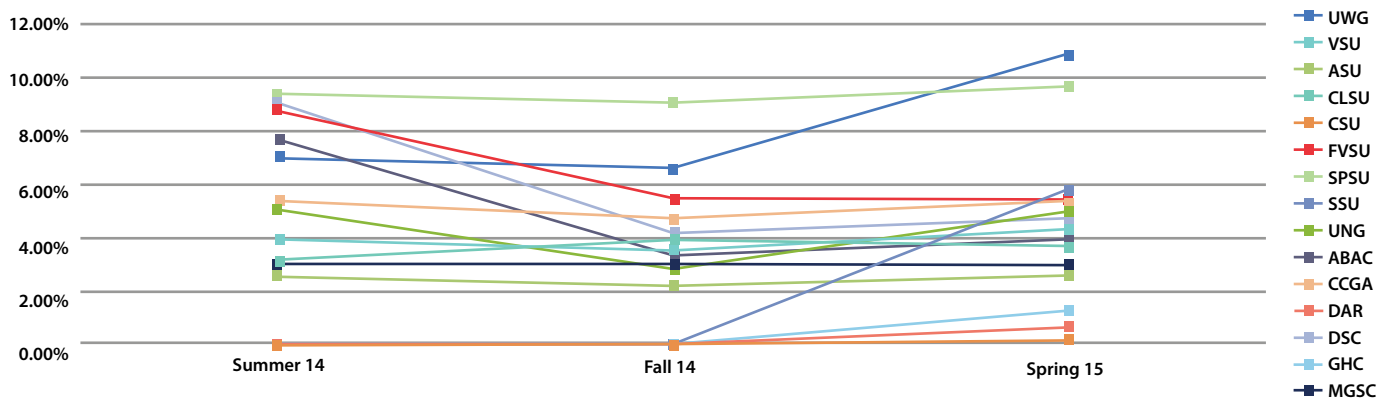


## eCore to USG Student Headcount for FY 2015

The following represents a comparison of the eCore unduplicated headcount by term and the USG census headcount by term for FY 2015.



Affiliate	Summer 2014 eCore Unduplicated HCT	Summer 2014 USG Census Student HCT	Summer 2014 eCore Pct of Student HCT	Fall 2014 eCore Unduplicated HCT	Fall 2014 USG Census Student HCT	Fall 2014 eCore Pct of Student HCT	Spring 2015 eCore Unduplicated HCT	Spring 2015 USG Census Student HCT	Spring 2015 eCore Pct of Student HCT
<b>Comprehensive Universities</b>									
UWG	344	4873	7.06%	802	12206	6.57%	1237	11394	10.86%
VSU	194	5025	3.86%	410	11563	3.55%	469	10919	4.30%
<b>State Universities</b>									
ASU	34	1345	2.53%	86	3910	2.20%	93	3569	2.61%
CLSU	93	2943	3.16%	273	7022	3.89%	249	6747	3.69%
CSU	0	3699	0.00%	0	8192	0.00%	13	7899	0.16%
FVSU	70	795	8.81%	143	2594	5.51%	137	2471	5.54%
SPSU	268	2877	9.32%	617	6786	9.09%	628	6498	9.66%
SSU	0	1094	0.00%	0	4915	0.00%	256	4422	5.79%
UNG	301	5853	5.14%	454	16064	2.83%	750	15351	4.89%
<b>State Colleges</b>									
ABAC	78	1019	7.65%	115	3458	3.33%	122	3137	3.89%
CCGA	55	1018	5.40%	142	3008	4.72%	152	2844	5.34%
DAR	0	2961	0.00%	0	5623	0.00%	33	5194	0.64%
DSC	148	1626	9.10%	204	4854	4.20%	214	4496	4.76%
GHC	0	1951	0.00%	0	5365	0.00%	63	5185	1.22%
MGSC	98	3276	2.99%	243	7927	3.07%	216	7248	2.98%