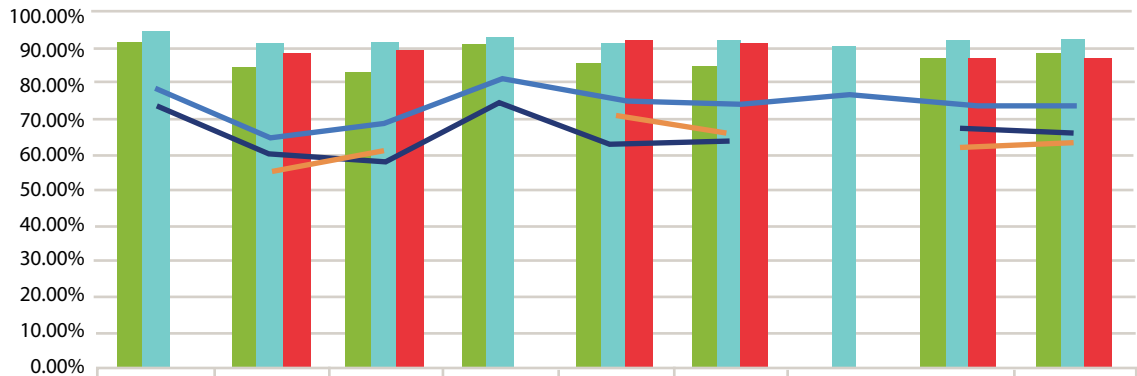


eCore Course Completion and Successful Course Completion by Session Type across Term

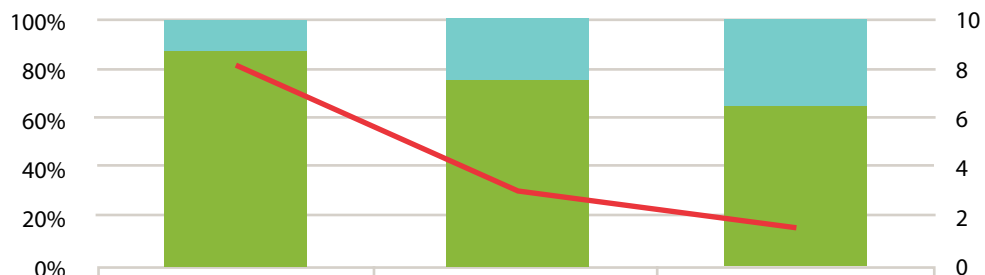


	Summer 2013	Fall 2012	Spring 2013	Summer 2013	Fall 2013	Spring 2014	Summer 2014	Fall 2014	Spring 2015
Course Completion Rate - Full	91.32%	83.53%	82.24%	90.14%	85.11%	84.65%	N/A	86.28%	87.41%
Course Completion Rate - Short I	94.44%	90.38%	90.97%	92.60%	90.87%	91.00%	89.65%	91.82%	91.83%
Course Completion Rate - Short II	N/A	88.44%	89.47%	N/A	91.81%	90.69%	N/A	86.64%	86.25%
Successful ABC Rate - Full	73.24%	59.37%	57.50%	74.10%	62.45%	63.06%	N/A	66.43%	65.50%
Successful ABC - Short I	77.78%	64.10%	68.06%	81.10%	75.34%	73.64%	75.92%	73.85%	72.96%
Successful ABC Rate - Short II	N/A	55.56%	60.37%	N/A	69.57%	64.95%	N/A	61.35%	62.23%

Session Type Comparisons

Each year, the enrollment ratio in full-to-short session sections is tracked, starting with a ratio of 8.2 in FY 2013. By FY 2015, the ratio of full-to-short session enrollment dropped significantly to 1.6. As this ratio approaches 1:1, meaning that the number of full session course sections is equal to the number of short session course sections, the enrollment will become equivalent in a FY between full session and short session deliveries.

eCore Enrollment by Session Type



	FY2013	FY2014	FY2015
Short	902	2384	5528
Full	7394	7307	8661
Ratio Full: Short	8.2	3.1	1.6