

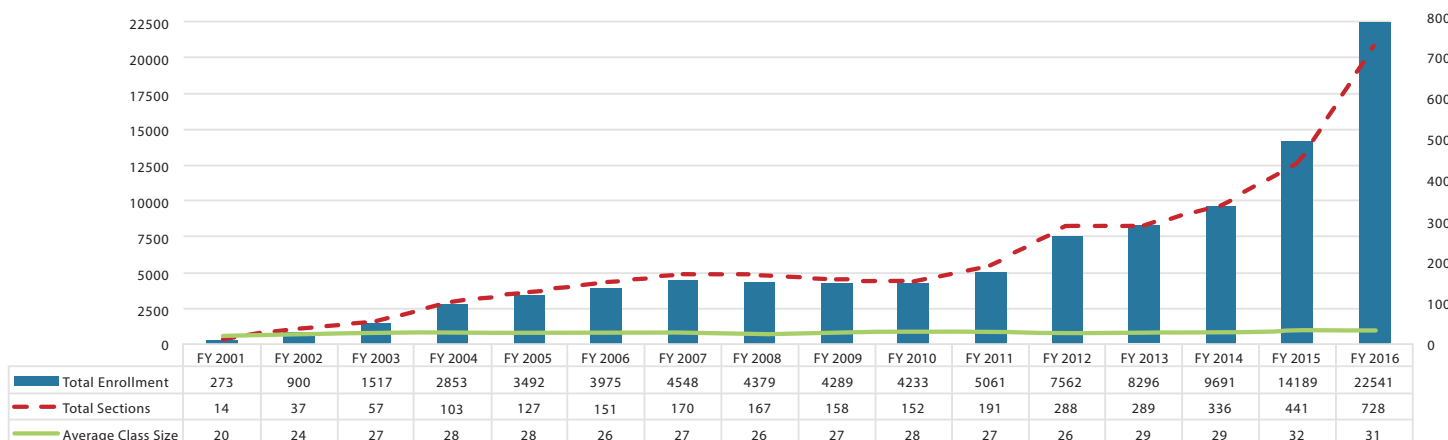
Academic Information

eCore's model of incorporating best practices in all aspects of online course creation and implementation has been a driving force behind the enrollment growth of eCore for several years.

Incorporating the pillars of quality courses, strong student support, and qualified faculty, eCore has been on an upward trajectory of growth. Students have found that not all online courses are created equally. They are becoming increasingly aware not only of price considerations but also how the relevance of quality, transferability, and reputation play a role in their decisions. eCore, working with USG institutions, is fulfilling these needs for students.

Total Enrollment by Fiscal Year

The following chart shows the total enrollment and number of sections offered by eCore, FY 2001 - FY 2016.

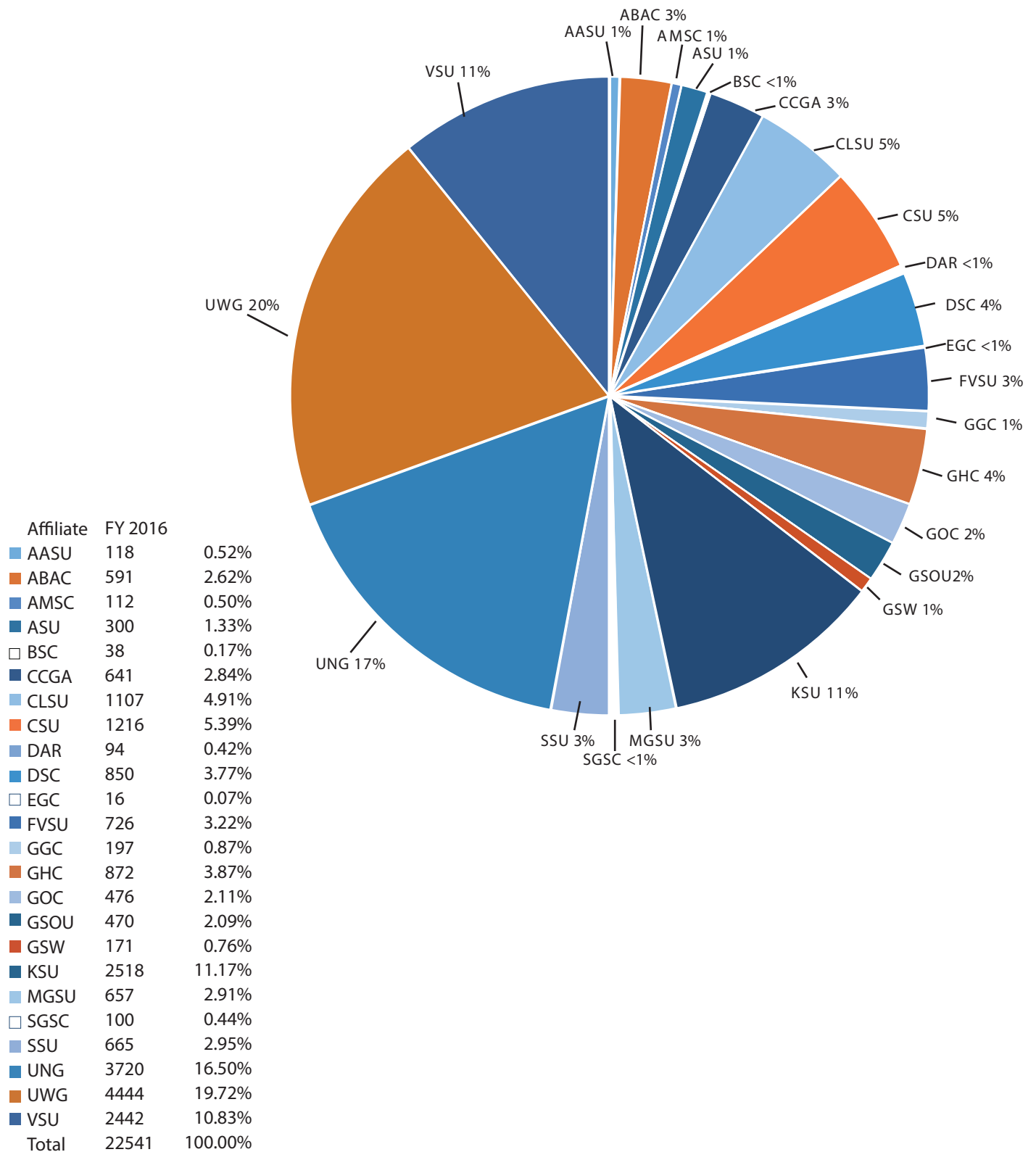


Enrollment by Affiliate FY 2007- 2016

The following chart represents the total enrollment in eCore courses by affiliate for FY 2007 - FY 2016.

Affiliate	FY 2007	FY 2008	FY 2009	FY 2010	FY 2011	FY 2012	FY 2013	FY 2014	FY 2015	FY 2016	Total all FY
AASU	0	0	0	0	0	0	0	0	0	118	118
ABAC	0	0	0	0	0	119	345	459	505	591	2019
AMSC	0	0	0	0	0	0	0	0	0	112	112
ASU	0	0	0	0	0	0	0	0	302	300	602
BSC	0	0	0	0	0	0	0	0	0	38	38
CCGA	0	0	0	0	0	0	175	568	545	641	1929
CLSU	0	0	0	0	395	1442	1386	1288	826	1107	6444
CSU	1216	942	496	0	0	0	0	0	13	1216	3883
DAR	0	0	0	0	0	0	0	0	35	94	129
DSC	0	0	0	0	0	624	596	664	857	850	3591
EGC	0	0	0	0	0	0	0	0	0	16	16
FVSU	0	0	0	0	0	188	316	466	555	726	2251
GGC	0	0	0	0	0	0	0	0	0	197	197
GHC	364	418	364	0	0	0	0	0	81	872	2099
GOC	0	0	0	0	0	0	0	0	0	476	476
GSOU	0	0	0	0	0	0	0	0	0	470	470
GSW	264	259	230	32	0	0	0	0	0	171	956
KSU	0	0	0	0	0	0	0	0	0	2518	2518
MGSU	0	0	0	0	349	512	681	620	745	657	3564
SGSC	0	0	0	0	0	0	0	0	0	100	100
SPSU	420	485	565	683	766	1124	1180	1265	2062	0	8550
SSU	0	0	0	0	0	0	0	0	344	665	1009
UNG	0	0	0	0	0	0	0	681	2123	3720	6524
UWG	1955	1875	1976	2665	2700	2551	2576	2369	3601	4444	26712
VSU	329	400	658	853	851	1002	1041	1311	1595	2442	10482
Total	4548	4379	4289	4233	5061	7562	8296	9691	14189	22541	84789

Total Enrollment FY 2016



Enrollment by Course

The following table outlines the enrollment in eCore courses by year from FY 2007 - 2016.

Course Title	FY 2007	FY 2008	FY 2009	FY 2010	FY 2011	FY 2012	FY 2013	FY 2014	FY 2015	FY 2016
American Government Top Enrollment	482	456	386	289	381	549	594	670	993	1927
American Literature I	NT	NT	NT	NT	NT	NT	NT	NT	207	649
American Literature II	146	89	128	85	121	195	211	221	315	264
Calculus I	51	55	63	67	53	111	143	157	346	420
Chemistry I	58	53	49	74	81	157	146	185	288	403
Chemistry II	34	30	33	61	45	76	90	70	128	205
College Algebra	233	206	220	227	282	403	444	560	715	1123
Elect. Tech. in Ed. Environment	20	15	12	27	56	30	30	37	57	117
English Composition I	193	209	165	185	296	365	363	441	591	980
English Composition II Top Enrollment	275	245	283	303	336	608	664	791	1079	1674
Geosciences I	186	150	174	106	137	184	262	322	482	616
Human Communication Top Enrollment	234	208	224	219	266	381	451	575	744	1330
Environmental Science	71	78	92	86	112	152	234	318	565	957
Intermediate Spanish I	36	50	49	114	121	153	157	172	228	385
Intermediate Spanish II	15	32	46	62	79	124	109	96	175	233
Math Modeling	82	78	78	64	84	164	186	206	291	422
Philosophy	199	219	226	226	234	298	354	509	636	1131
Physics I	31	42	33	34	39	59	51	63	89	145
Physics II	4	5	NT	NT	NT	NT	NT	NT	NT	NT
Pre-Calculus	167	129	137	168	204	334	365	432	661	896
Psychology	389	323	282	272	300	438	514	512	753	1267
Sociology	290	318	263	285	327	463	480	619	832	1296
Statistics	146	134	131	135	173	273	297	396	595	741
U.S. History I Top Enrollment	450	462	498	445	510	659	681	786	1248	1996
World History I Top Enrollment	471	517	488	506	575	820	874	821	1088	1744
World Literature I	285	276	229	193	249	566	596	732	935	1135
World Literature II	NT	NT	NT	NT	NT	NT	NT	NT	148	485
Total Enrollment for All Courses	4548	4379	4289	4233	5061	7562	8296	9691	14189	22541

*NT = Not Taught

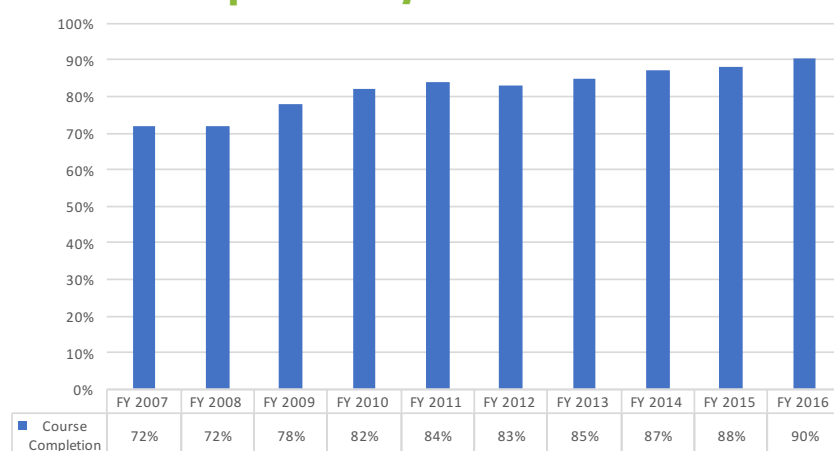
Course Completion by Course

The following table outlines the percentage of students retained by course and year from FY 2007 - FY 2015.

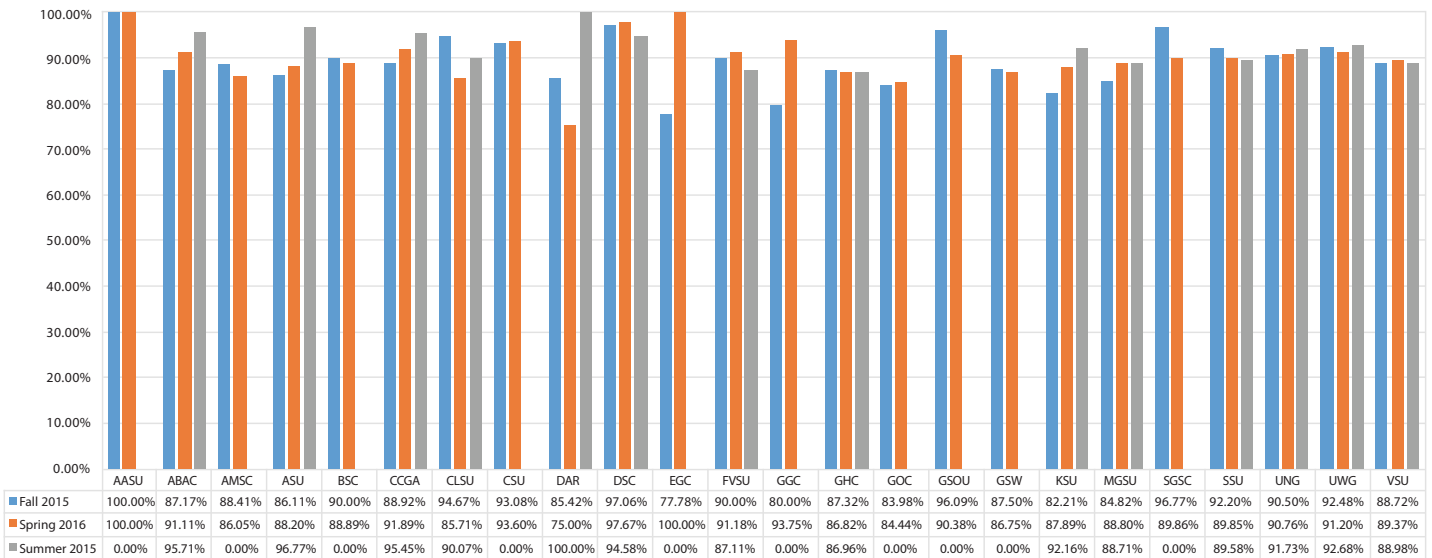
Course Title	FY 2007	FY 2008	FY 2009	FY 2010	FY 2011	FY 2012	FY 2013	FY 2014	FY 2015	FY 2016
American Government	73%	74%	84%	90%	90%	88%	90%	91%	94%	95%
American Literature I	NT	NT	NT	NT	NT	NT	NT	NT	88%	88%
American Literature II	71%	82%	84%	74%	76%	87%	85%	88%	88%	88%
Calculus I	63%	65%	75%	75%	72%	71%	71%	71%	72%	81%
Chemistry I	59%	60%	65%	62%	64%	64%	66%	76%	80%	84%
Chemistry II	62%	47%	73%	82%	78%	86%	80%	83%	82%	86%
College Algebra	71%	73%	81%	84%	83%	85%	85%	84%	85%	88%
Elect. Tech. in Ed. Environment	70%	80%	83%	85%	88%	80%	87%	89%	93%	98%
English Composition I	75%	78%	87%	86%	87%	90%	89%	89%	93%	93%
English Composition II	74%	65%	76%	79%	83%	82%	87%	91%	91%	93%
Geosciences I	70%	73%	76%	75%	84%	80%	77%	83%	80%	81%
Human Communication	68%	74%	86%	85%	89%	85%	88%	88%	92%	94%
Environmental Science	90%	92%	87%	87%	92%	89%	89%	97%	92%	94%
Intermediate Spanish I	69%	60%	61%	68%	77%	72%	81%	81%	84%	83%
Intermediate Spanish II	93%	75%	83%	77%	89%	90%	96%	90%	89%	92%
Math Modeling	46%	54%	63%	69%	62%	78%	79%	77%	84%	83%
Philosophy	62%	63%	77%	81%	83%	77%	82%	86%	83%	86%
Physics I	45%	50%	52%	59%	69%	68%	75%	86%	76%	72%
Physics II	100%	40%	NT	NT	NT	NT	NT	NT	NT	NT
Pre-Calculus	70%	74%	74%	76%	78%	78%	83%	86%	85%	86%
Psychology	74%	71%	74%	86%	88%	85%	91%	91%	92%	92%
Sociology	77%	79%	85%	89%	89%	88%	91%	92%	92%	92%
Statistics	78%	73%	76%	82%	81%	74%	81%	86%	83%	85%
U.S. History I	79%	71%	79%	83%	85%	85%	88%	88%	89%	93%
World History I	72%	77%	77%	83%	87%	85%	84%	89%	89%	91%
World Literature I	66%	70%	70%	84%	79%	78%	79%	81%	83%	90%
World Literature II	NT	NT	NT	NT	NT	NT	NT	NT	91%	90%
Total Retention All Courses	72%	72%	78%	82%	84%	83%	85%	87%	88%	90%

*NT = Not Taught

Course Completion by Fiscal Year



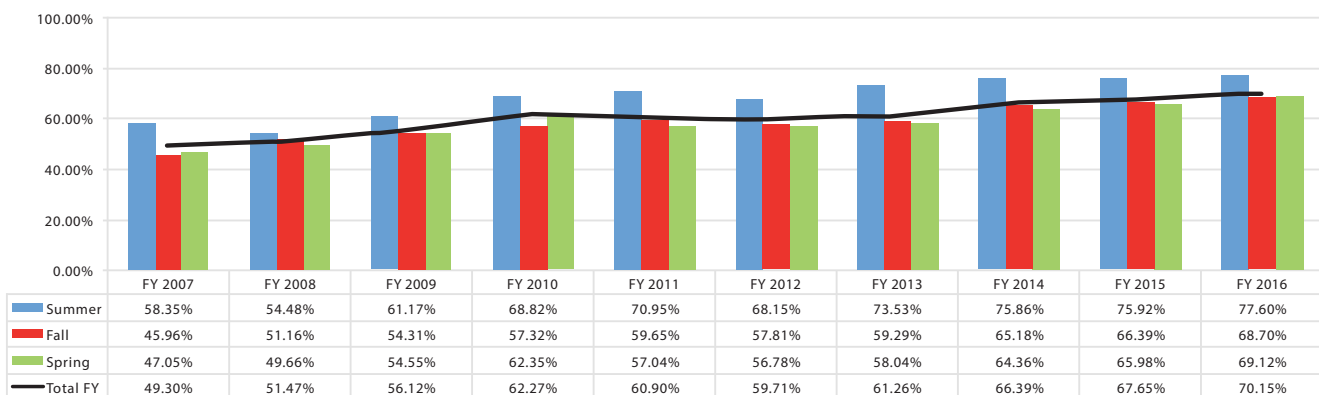
Course Completion by Affiliate



Grade Comparisons

The following sub-sections represent the eCore grade distribution findings for FY 2016. The first sub-section chart is a summary of eCore Percent Successful Grades (Grade A-B-C) by Fiscal Year since FY 2007. There is also a sub-section identifying the Short Session course rates since FY 2013, which is the inception date for short sessions. The third sub-section reports Course and Successful Course Completion by Session Type and Semester, and this is followed by the case for Short Sessions as eCore is rapidly approaching a 1:1 ratio of full to short sessions. The last sub-section is a comparison of eCore FY 2016 grades to the home institution equivalent courses, providing a meta-assessment to comparative home institution grade distribution data for the same semesters. The affiliate data are representative of face-to-face, partial and total distance delivery, and other special course options at that campus, such as honors or learning cohorts. For FY 2016, the home institution grade data was provided the by USG Data and Research Policy Analysis organization.

eCore Percent Successful Completion (A-B-C) FY 2007 – FY 2016 (Summer 2006 – Spring 2016)



The Case for Short Sessions

eCore began offering short session (8-week) versions of courses in Summer 2012 (FY 2013) and has steadily increased the number of course sections offered in the 8-week format beginning with 3 sections in the first summer, to 39 sections (including Spanish and Calculus I) in Spring 2014, almost doubling in Spring 2015 to 71 short session course sections offered, and 133 short sessions in Spring 2016.

In FY2015, the Summer 2014 session became all 8-week delivery. In addition to reducing confusion in summer registration for either 8-week or 10-week version of the courses, the summer switch also created an ancillary improvement in instructional design and faculty support, given that eCore courses need to be delivered only in 8-week and 16-week versions. All courses with the exception of the 4-hour lab sciences are now offered in both 8-week and 16-week delivery.

Short Sessions offer a flexible alternative for the student who may be impeded by a full 16-week time commitment. This can often translate to improved success because the student has a shorter time commitment, may be registered in fewer hours during the short session, probably has a higher

concentration of study time, and may have an academic incentive to complete quickly, such as meeting up with a cohort or graduating on time.

Short Session I course students will typically outperform Full and Short Session II performance.

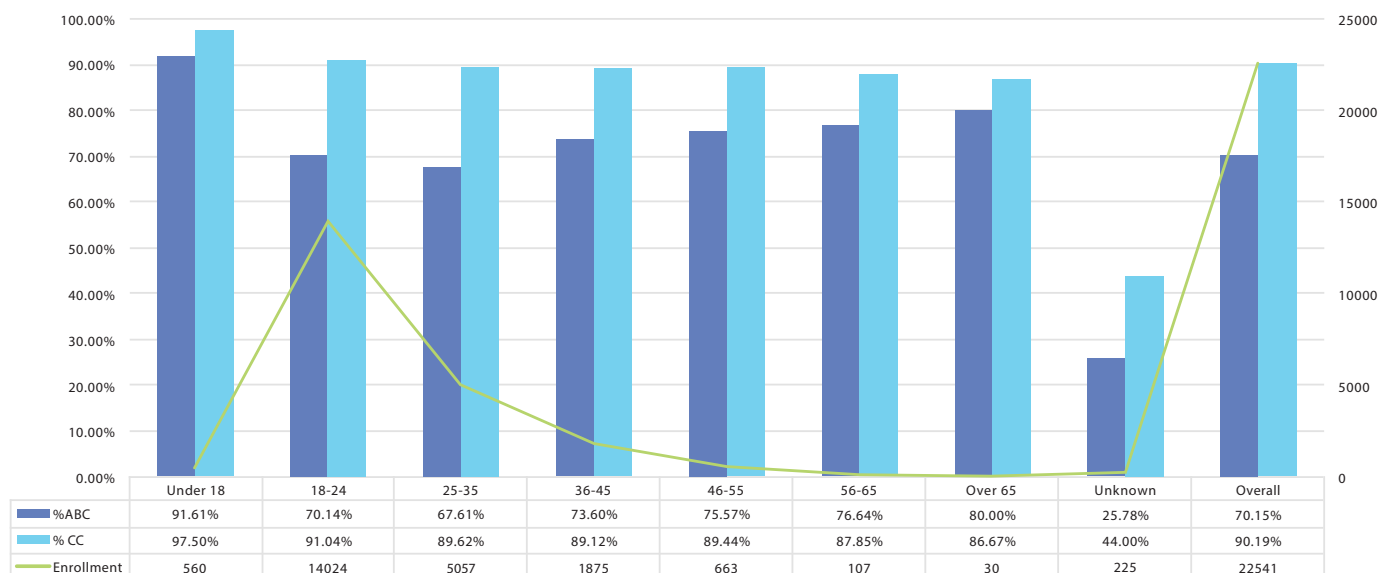
For FY 2016, eCore delivered 356 short session course sections compared to 372 full session course sections.

For FY 2016, the highest successful course completion occurred in Summer 2015 Short I, at 77.60%. The second highest successful course completion occurred in Spring 2016 Short I, at 77.21%.

Successful Course Completion (A-B-C Grades) by Session Type FY 2016

Each year, the enrollment ratio in full-to-short session sections is tracked, starting with a ratio of 8.2 in FY2013. By FY2016, the ratio of full-to-short session enrollment has dropped to 1.2 and is rapidly approaching 1.0. A ratio of 1:1 (1.0) means the enrollment will become equivalent in a FY between full session and short session deliveries.

FY 2016 Performance by Age Bracket

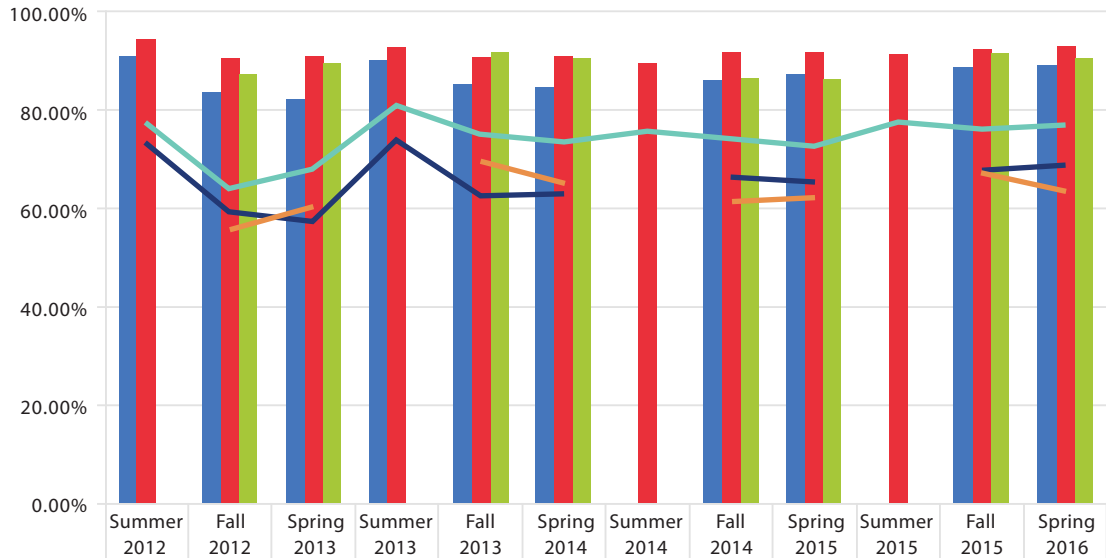


MOWR Student Performance

In FY 2016, eCore had 573 MOWR students enrolled in 798 classes. There were no incompletes for MOWR students during this time. The following table shows the performance of the MOWR students by course.

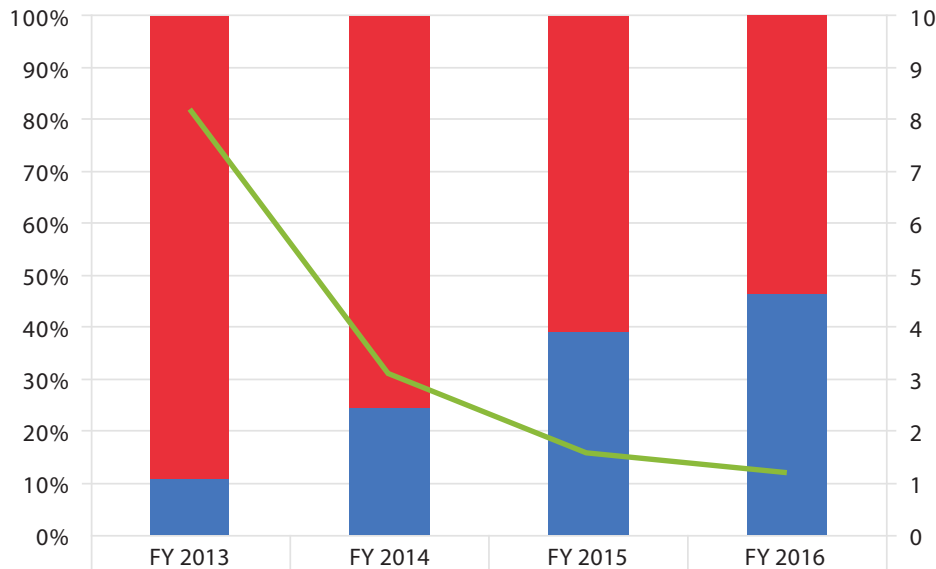
Course	%ABC	%DFW	%CC
CHEM 1211K	75%	25%	100%
CHEM 1212K	100%	0%	100%
COMM 1100	94%	6%	97%
ENGL 1101	88%	12%	99%
ENGL 1102	94%	6%	99%
ENGL 2111	89%	11%	100%
ENGL 2112	100%	0%	100%
ENGL 2131	94%	6%	97%
ENGL 2132	100%	0%	100%
ENVS 2202	87%	13%	98%
ETEC 1101	100%	0%	100%
GEOL 1011K	83%	17%	83%
HIST 1111	93%	8%	98%
HIST 2111	94%	6%	97%
MATH 1101	100%	0%	100%
MATH 1111	92%	8%	96%
MATH 1113	91%	9%	98%
MATH 1401	79%	21%	86%
MATH 1501	60%	40%	80%
PHIL 2010	79%	21%	90%
PHYS 1211K	100%	0%	100%
POLS 1101	100%	0%	100%
PSYC 1101	90%	10%	100%
SOCI 1101	95%	5%	100%
SPAN 2001	80%	20%	80%
SPAN 2002	N/A	N/A	N/A
Total	91%	9%	97%

Course Completion and Successful Course Completion by Session Type across Term



	Summer 2012	Fall 2012	Spring 2013	Summer 2013	Fall 2013	Spring 2014	Summer 2014	Fall 2014	Spring 2015	Summer 2015	Fall 2015	Spring 2016
Course Completion Rate - Full	91.32%	83.53%	82.24%	90.14%	85.11%	84.65%		86.28%	87.41%		88.70%	89.18%
Course Completion Rate - Short I	94.44%	90.38%	90.97%	92.60%	90.87%	91.00%	89.65%	91.82%	91.83%	91.36%	92.37%	93.23%
Course Completion Rate - Short II		87.44%	89.47%		91.81%	90.69%		86.64%	86.25%		91.43%	90.48%
Successful ABC Rate - Full	73.24%	59.37%	57.50%	74.10%	62.45%	63.06%		66.43%	65.50%		67.71%	68.85%
Successful ABC Rate - Short I	77.78%	64.10%	68.06%	81.10%	75.34%	73.64%	75.92%	73.85%	72.96%	77.60%	76.42%	77.21%
Successful ABC Rate - Short II		55.56%	60.37%		69.57%	64.95%		61.35%	62.23%		67.16%	63.55%

Session Length & Enrollment



Full	7394	7307	8661	12073
Short	902	2384	5528	10468
Ratio Full : Short	8.2	3.1	1.6	1.2

eCore Course

Equivalent Seated Campus Course

eCore Course	Institution	HCT (* = Masked)	Percent Successful Course Completion (Grades A-B-C-S)	Percent Unsuccessful Course Completion (Grades D-F-W)	Percent Incompletion (Grade I)	Percent Course Completion (No Withdrawals)	Equivalent Course	HCT (* = Masked)	Percent Successful Course Completion (Grades A-B-C-S)	Percent Unsuccessful Course Completion (Grades D-F-W-WF-WM-U)	Percent Incompletion (Grade I-NR-NG)	Percent Course Completion (No Withdrawals)
CHEM 1211K		403	62.03%	37.72%	0.25%	84.12%						
CHEM 1211K	AASU	*	*	*	*	*	CHEM 1211	515	71.26%	28.54%	0.19%	92.62%
CHEM 1211K	AASU	-	-	-	-	-	CHEM 1211L	506	76.68%	13.24%	10.08%	92.69%
CHEM 1211K	ABAC	*	*	*	*	*	CHEM 1211	316	66.46%	32.91%	0.63%	94.30%
CHEM 1211K	ABAC	-	-	-	-	-	CHEM 1211L	296	83.78%	15.88%	0.34%	94.26%
CHEM 1211K	AMSC	*	*	*	*	*	CHEM 1211	134	65.67%	29.85%	4.48%	92.54%
CHEM 1211K	AMSC	-	-	-	-	-	CLAB 1211	NR	NR	NR	NR	NR
CHEM 1211K	ASU	*	*	*	*	*	CHEM 1211K	NR	NR	NR	NR	NR
CHEM 1211K	BSC	*	*	*	*	*	CHEM 1211	110	82.73%	16.36%	0.91%	95.45%
CHEM 1211K	BSC	-	-	-	-	-	CHEM 1211L	106	88.68%	10.38%	0.94%	95.28%
CHEM 1211K	CCGA	17	52.94%	47.06%	0.00%	88.24%	CHEM 1211	251	57.37%	39.04%	3.59%	90.84%
CHEM 1211K	CLSU	*	*	*	*	*	CHEM 1211	257	62.26%	37.74%	0.00%	91.83%
CHEM 1211K	CLSU	-	-	-	-	-	CHEM 1211L	209	78.47%	21.53%	0.00%	89.95%
CHEM 1211K	CSU	50	64.00%	36.00%	0.00%	88.00%	CHEM 1211K	NR	NR	NR	NR	NR
CHEM 1211K	DAR	0	N/A	N/A	N/A	N/A	CHEM 1211K	N/A	N/A	N/A	N/A	N/A
CHEM 1211K	DSC	*	*	*	*	*	CHEM 1211K	384	78.91%	19.27%	1.82%	89.32%
CHEM 1211K	EGC	0	N/A	N/A	N/A	N/A	CHEM 1211	N/A	N/A	N/A	N/A	N/A
CHEM 1211K	FVSU	*	*	*	*	*	CHEM 1211K	158	51.90%	48.10%	0.00%	89.24%
CHEM 1211K	GGC	*	*	*	*	*	CHEM 1211K	1499	58.97%	40.76%	0.27%	83.32%
CHEM 1211K	GHC	31	58.06%	41.94%	0.00%	74.19%	CHEM 1211K	349	57.88%	41.26%	0.86%	76.50%
CHEM 1211K	GOC	*	*	*	*	*	CHEM 1211K	355	62.54%	37.46%	0.00%	87.89%
CHEM 1211K	GSOU	*	*	*	*	*	CHEM 1145	2567	36.11%	13.79%	50.10%	95.13%
CHEM 1211K	GSW	*	*	*	*	*	CHEM 1211	97	56.70%	42.27%	1.03%	81.44%
CHEM 1211K	GSW	-	-	-	-	-	CHEM 1211L	83	77.11%	22.89%	0.00%	80.72%
CHEM 1211K	KSU	127	67.72%	31.50%	0.79%	85.04%	CHEM 1211	2580	55.16%	44.81%	0.04%	82.95%
CHEM 1211K	KSU	-	-	-	-	-	CHEM 1211L	2165	79.17%	20.83%	0.00%	87.11%
CHEM 1211K	MGSU	11	45.45%	54.55%	0.00%	72.73%	CHEM 1211K	262	73.28%	26.72%	0.00%	89.69%
CHEM 1211K	SGSC	*	*	*	*	*	CHEM 1211K	165	61.21%	38.18%	0.61%	89.70%
CHEM 1211K	SSU	*	*	*	*	*	CHEM 1211	348	66.38%	32.76%	0.86%	91.38%
CHEM 1211K	SSU	-	-	-	-	-	CHEM 1211L	358	72.07%	27.37%	0.56%	88.83%
CHEM 1211K	UNG	54	62.96%	37.04%	0.00%	81.48%	CHEM 1211	1225	62.53%	34.45%	3.02%	82.53%
CHEM 1211K	UNG	-	-	-	-	-	CHEM 1211L	1122	74.60%	22.91%	2.50%	82.09%
CHEM 1211K	UWG	49	61.22%	38.78%	0.00%	83.67%	CHEM 1211	650	62.92%	36.92%	0.15%	91.54%
CHEM 1211K	UWG	-	-	-	-	-	CHEM 1211L	623	79.61%	20.22%	0.16%	92.46%
CHEM 1211K	VSU	*	*	*	*	*	CHEM 1211	380	71.84%	27.63%	0.53%	92.37%
CHEM 1211K	VSU	-	-	-	-	-	CHEM 1211L	356	83.15%	16.29%	0.56%	93.26%
CHEM 1212K		205	67.80%	31.22%	0.98%	85.85%						
CHEM 1212K	AASU	*	*	*	*	*	CHEM 1212	359	76.88%	23.12%	0.00%	93.87%
CHEM 1212K	AASU	-	-	-	-	-	CHEM 1212L	356	76.97%	8.15%	14.89%	95.22%
CHEM 1212K	ABAC	*	*	*	*	*	CHEM 1212	168	89.29%	10.71%	0.00%	95.83%

eCore Course

Equivalent Seated Campus Course

eCore Course	Institution	HCT (* = Masked)	Percent Successful Course Completion (Grades A-B-C-S)	Percent Unsuccessful Course Completion (Grades D-F-W)	Percent Incompletion (Grade I)	Percent Course Completion (No Withdrawals)	Equivalent Course	HCT (* = Masked)	Percent Successful Course Completion (Grades A-B-C-S)	Percent Unsuccessful Course Completion (Grades D-F-W-WF-WM-U)	Percent Incompletion (Grade I-NR-NG)	Percent Course Completion (No Withdrawals)
CHEM 1212K	ABAC	-	-	-	-	-	CHEM 1212L	158	94.94%	5.06%	0.00%	95.57%
CHEM 1212K	AMSC	0	N/A	N/A	N/A	N/A	CHEM 1212	N/A	N/A	N/A	N/A	N/A
CHEM 1212K	AMSC	0	N/A	N/A	N/A	N/A	CLAB 1212	N/A	N/A	N/A	N/A	N/A
CHEM 1212K	ASU	0	N/A	N/A	N/A	N/A	CHEM 1212K	N/A	N/A	N/A	N/A	N/A
CHEM 1212K	BSC	0	N/A	N/A	N/A	N/A	CHEM 1212	N/A	N/A	N/A	N/A	N/A
CHEM 1212K	BSC	0	N/A	N/A	N/A	N/A	CHEM 1212L	N/A	N/A	N/A	N/A	N/A
CHEM 1212K	CCGA	*	*	*	*	*	CHEM 1212	112	76.79%	22.32%	0.89%	93.75%
CHEM 1212K	CLSU	13	61.54%	38.46%	0.00%	100.00%	CHEM 1212	163	42.94%	57.06%	0.00%	84.66%
CHEM 1212K	CLSU	-	-	-	-	-	CHEM 1212L	134	73.13%	26.87%	0.00%	84.33%
CHEM 1212K	CSU	11	72.73%	27.27%	0.00%	90.91%	CHEM 1212K	NR	NR	NR	NR	NR
CHEM 1212K	DAR	0	N/A	N/A	N/A	N/A	CHEM 1212K	N/A	N/A	N/A	N/A	N/A
CHEM 1212K	DSC	0	N/A	N/A	N/A	N/A	CHEM 1212K	N/A	N/A	N/A	N/A	N/A
CHEM 1212K	EGC	0	N/A	N/A	N/A	N/A	CHEM 1211	N/A	N/A	N/A	N/A	N/A
CHEM 1212K	FVSU	*	*	*	*	*	CHEM 1212K	112	63.39%	34.82%	1.79%	90.18%
CHEM 1212K	GGC	*	*	*	*	*	CHEM 1212K	946	74.00%	25.79%	0.21%	90.06%
CHEM 1212K	GHC	14	71.43%	28.57%	0.00%	78.57%	CHEM 1212K	158	68.35%	31.65%	0.00%	82.91%
CHEM 1212K	GOC	*	*	*	*	*	CHEM 1212K	181	62.98%	36.46%	0.55%	85.64%
CHEM 1212K	GSOU	0	N/A	N/A	N/A	N/A	CHEM 1146	N/A	N/A	N/A	N/A	N/A
CHEM 1212K	GSW	0	N/A	N/A	N/A	N/A	CHEM 1212	N/A	N/A	N/A	N/A	N/A
CHEM 1212K	GSW	0	N/A	N/A	N/A	N/A	CEHM 1212L	N/A	N/A	N/A	N/A	N/A
CHEM 1212K	KSU	49	73.47%	24.49%	2.04%	83.67%	CHEM 1212	1093	59.74%	40.16%	0.09%	86.46%
CHEM 1212K	KSU	-	-	-	-	-	CHEM 1212L	853	83.24%	16.65%	0.12%	89.68%
CHEM 1212K	MGSU	*	*	*	*	*	CHEM 1212K	187	73.26%	26.74%	0.00%	91.98%
CHEM 1212K	SGSC	*	*	*	*	*	CHEM 1212K	76	75.00%	23.68%	1.32%	92.11%
CHEM 1212K	SSU	*	*	*	*	*	CHEM 1212	244	72.54%	27.46%	0.00%	93.44%
CHEM 1212K	SSU	-	-	-	-	-	CHEM 1212L	177	86.44%	13.56%	0.00%	93.22%
CHEM 1212K	UNG	24	87.50%	12.50%	0.00%	87.50%	CHEM 1212	736	71.06%	24.46%	4.48%	87.64%
CHEM 1212K	UNG	-	-	-	-	-	CHEM 1212L	669	80.57%	16.89%	2.54%	87.74%
CHEM 1212K	UWG	46	58.70%	41.30%	0.00%	91.30%	CHEM 1212	353	73.94%	26.06%	0.00%	94.90%
CHEM 1212K	UWG	-	-	-	-	-	CHEM 1212L	317	83.91%	16.09%	0.00%	94.32%
CHEM 1212K	VSU	15	46.67%	46.67%	6.67%	66.67%	CHEM 1212	210	77.62%	20.48%	1.90%	89.52%
CHEM 1212K	VSU	-	-	-	-	-	CHEM 1212L	193	88.60%	9.84%	1.55%	96.37%
COMM 1100		1330	71.20%	28.72%	0.08%	93.68%						
COMM 1100	AASU	*	*	*	*	*	No Equivalent	-	-	-	-	-
COMM 1100	ABAC	46	73.91%	26.09%	0.00%	95.65%	COMM 1100	683	86.97%	12.74%	0.29%	97.66%
COMM 1100	AMSC	*	*	*	*	*	COMM 1100	542	62.92%	35.42%	1.66%	97.42%
COMM 1100	ASU	34	67.65%	32.35%	0.00%	91.18%	COMM 1100	500	86.60%	13.40%	0.00%	97.80%
COMM 1100	BSC	*	*	*	*	*	COMM 1100	509	70.14%	26.92%	2.95%	91.16%
COMM 1100	CCGA	20	60.00%	40.00%	0.00%	90.00%	COMM 1101	408	87.01%	8.09%	4.90%	97.06%
COMM 1100	CLSU	70	78.57%	21.43%	0.00%	92.86%	COMM 1110	713	88.64%	11.36%	0.00%	95.37%

eCore Course

Equivalent Seated Campus Course

eCore Course	Institution	HCT (* = Masked)	Percent Successful Course Completion (Grades A-B-C-S)	Percent Unsuccessful Course Completion (Grades D-F-W)	Percent Incompletion (Grade I)	Percent Course Completion (No Withdrawals)	Equivalent Course	HCT (* = Masked)	Percent Successful Course Completion (Grades A-B-C-S)	Percent Unsuccessful Course Completion (Grades D-F-W-WF-WM-U)	Percent Incompletion (Grade I-NR-NG)	Percent Course Completion (No Withdrawals)
COMM 1100	CSU	43	69.77%	30.23%	0.00%	97.67%	COMM 1110	1462	78.25%	21.00%	0.75%	92.61%
COMM 1100	DAR	0	N/A	N/A	N/A	N/A	COMM 1100	N/A	N/A	N/A	N/A	N/A
COMM 1100	DSC	33	69.70%	30.30%	0.00%	100.00%	No Equivalent	-	-	-	-	-
COMM 1100	EGC	*	*	*	*	*	COMM 1110	1007	87.09%	12.71%	0.20%	96.43%
COMM 1100	FVSU	39	74.36%	25.64%	0.00%	92.31%	COMM 1110	430	87.67%	12.33%	0.00%	97.21%
COMM 1100	GGC	*	*	*	*	*	COMM 1100	NR	NR	NR	NR	NR
COMM 1100	GHC	78	71.79%	28.21%	0.00%	94.87%	COMM 1100	1797	82.58%	17.14%	0.28%	92.99%
COMM 1100	GOC	24	79.17%	20.83%	0.00%	100.00%	COMM 1100	52	84.62%	15.38%	0.00%	98.08%
COMM 1100	GSOU	33	66.67%	33.33%	0.00%	96.97%	COMM 1100	192	71.88%	28.13%	0.00%	95.31%
COMM 1100	GSW	13	69.23%	30.77%	0.00%	84.62%	COMM 1110	NR	NR	NR	NR	NR
COMM 1100	KSU	139	69.78%	30.22%	0.00%	89.93%	COM 1100	NR	NR	NR	NR	NR
COMM 1100	MGSU	34	73.53%	26.47%	0.00%	88.24%	COMM 1110	NR	NR	NR	NR	NR
COMM 1100	SGSC	*	*	*	*	*	COMM 1110	89	61.80%	38.20%	0.00%	87.64%
COMM 1100	SSU	*	*	*	*	*	HUMN 1201	1556	65.30%	33.48%	1.22%	96.21%
COMM 1100	UNG	113	73.45%	25.66%	0.88%	90.27%	COMM 1100	318	87.42%	11.95%	0.63%	93.40%
COMM 1100	UWG	429	71.56%	28.44%	0.00%	95.10%	COMM 1110	NR	NR	NR	NR	NR
COMM 1100	VSU	136	71.32%	28.68%	0.00%	92.65%	COMM 1100	361	93.09%	6.91%	0.00%	98.34%
ENGL 1101		980	63.88%	35.71%	0.41%	92.55%						
ENGL 1101	AASU	*	*	*	*	*	ENGL 1101	1106	78.30%	21.16%	0.54%	96.29%
ENGL 1101	ABAC	21	57.14%	38.10%	4.76%	85.71%	ENGL 1101	1125	70.04%	29.69%	0.27%	94.93%
ENGL 1101	AMSC	*	*	*	*	*	ENGL 1101	1134	64.90%	31.48%	3.62%	96.91%
ENGL 1101	ASU	*	*	*	*	*	ENGL 1101	589	70.80%	28.86%	0.34%	98.81%
ENGL 1101	BSC	0	N/A	N/A	N/A	N/A	ENGL 1101	N/A	N/A	N/A	N/A	N/A
ENGL 1101	CCGA	37	64.86%	32.43%	2.70%	83.78%	ENGL 1101	972	73.35%	20.88%	5.76%	94.34%
ENGL 1101	CLSU	44	77.27%	22.73%	0.00%	97.73%	ENGL 1101	1243	82.54%	17.38%	0.08%	95.98%
ENGL 1101	CSU	34	55.88%	44.12%	0.00%	88.24%	ENGL 1101	1270	82.44%	16.85%	0.71%	94.33%
ENGL 1101	DAR	0	N/A	N/A	N/A	N/A	ENGL 1101	N/A	N/A	N/A	N/A	N/A
ENGL 1101	DSC	32	56.25%	43.75%	0.00%	96.88%	ENGL 1101	1233	80.21%	19.22%	0.57%	94.65%
ENGL 1101	EGC	*	*	*	*	*	ENGL 1101	1794	60.93%	38.18%	0.89%	93.70%
ENGL 1101	FVSU	33	75.76%	24.24%	0.00%	96.97%	ENGL 1101	579	75.47%	23.83%	0.69%	95.34%
ENGL 1101	GGC	12	58.33%	41.67%	0.00%	100.00%	ENGL 1101	3407	74.26%	25.57%	0.18%	93.69%
ENGL 1101	GHC	44	45.45%	54.55%	0.00%	93.18%	ENGL 1101	2124	75.56%	24.25%	0.19%	91.90%
ENGL 1101	GOC	13	46.15%	53.85%	0.00%	100.00%	ENGL 1101	1564	65.54%	34.27%	0.19%	82.86%
ENGL 1101	GSOU	*	*	*	*	*	ENGL 1101	3308	79.53%	20.28%	0.18%	94.77%
ENGL 1101	GSW	*	*	*	*	*	ENGL 1101	462	70.78%	29.22%	0.00%	89.83%
ENGL 1101	KSU	115	63.48%	35.65%	0.87%	90.43%	ENGL 1101	4875	86.30%	13.50%	0.21%	94.05%
ENGL 1101	MGSU	27	66.67%	29.63%	3.70%	92.59%	ENGL 1101	2314	72.82%	26.88%	0.30%	94.51%
ENGL 1101	SGSC	*	*	*	*	*	ENGL 1101	1380	76.38%	22.17%	1.45%	97.03%
ENGL 1101	SSU	29	31.03%	68.97%	0.00%	86.21%	ENGL 1101	1724	66.30%	32.42%	1.28%	97.16%
ENGL 1101	UNG	204	75.49%	24.51%	0.00%	92.65%	ENGL 1101	4406	80.87%	17.43%	1.70%	95.89%

eCore Course

Equivalent Seated Campus Course

eCore Course	Institution	HCT (* = Masked)	Percent Successful Course Completion (Grades A-B-C-S)	Percent Unsuccessful Course Completion (Grades D-F-W)	Percent Incompletion (Grade I)	Percent Course Completion (No Withdrawals)	Equivalent Course	HCT (* = Masked)	Percent Successful Course Completion (Grades A-B-C-S)	Percent Unsuccessful Course Completion (Grades D-F-W-WF-WM-U)	Percent Incompletion (Grade I-NR-NG)	Percent Course Completion (No Withdrawals)
ENGL 1101	UWG	250	64.00%	36.00%	0.00%	94.80%	ENGL 1101	2669	79.96%	19.82%	0.22%	96.82%
ENGL 1101	VSU	63	58.73%	41.27%	0.00%	88.89%	ENGL 1101	1389	82.15%	17.28%	0.58%	96.11%
ENGL 1102		1674	72.64%	27.12%	0.24%	93.49%						
ENGL 1102	AASU	10	70.00%	30.00%	0.00%	100.00%	ENGL 1102	1134	82.63%	17.02%	0.35%	94.62%
ENGL 1102	ABAC	53	77.36%	20.75%	1.89%	96.23%	ENGL 1102	866	85.22%	14.78%	0.00%	97.92%
ENGL 1102	AMSC	12	25.00%	75.00%	0.00%	91.67%	ENGL 1102	1083	64.08%	34.44%	1.48%	94.28%
ENGL 1102	ASU	27	48.15%	51.85%	0.00%	88.89%	ENGL 1102	592	68.41%	31.25%	0.34%	95.61%
ENGL 1102	BSC	*	*	*	*	*	ENGL 1102	529	69.00%	28.17%	2.84%	86.96%
ENGL 1102	CCGA	37	64.86%	35.14%	0.00%	89.19%	ENGL 1102	841	76.46%	19.50%	4.04%	96.20%
ENGL 1102	CLSU	84	73.81%	25.00%	1.19%	96.43%	ENGL 1102	1249	80.86%	18.49%	0.64%	93.67%
ENGL 1102	CSU	54	87.04%	12.96%	0.00%	96.30%	ENGL 1102	1264	85.84%	13.61%	0.55%	94.07%
ENGL 1102	DAR	*	*	*	*	*	ENGL 1102	1450	61.17%	38.34%	0.48%	87.24%
ENGL 1102	DSC	66	77.27%	22.73%	0.00%	95.45%	ENGL 1102	1121	77.97%	21.23%	0.80%	93.58%
ENGL 1102	EGC	0	N/A	N/A	N/A	N/A	ENGL 1102	N/A	N/A	N/A	N/A	N/A
ENGL 1102	FVSU	56	67.86%	32.14%	0.00%	98.21%	ENGL 1102	508	73.62%	26.18%	0.20%	97.64%
ENGL 1102	GGC	27	51.85%	48.15%	0.00%	96.30%	ENGL 1102	2911	73.07%	26.62%	0.31%	89.66%
ENGL 1102	GHC	68	69.12%	30.88%	0.00%	94.12%	ENGL 1102	1753	71.59%	28.07%	0.34%	88.25%
ENGL 1102	GOC	35	68.57%	31.43%	0.00%	91.43%	ENGL 1102	1237	62.25%	37.27%	0.49%	79.87%
ENGL 1102	GSOU	49	69.39%	30.61%	0.00%	93.88%	ENGL 1102	3688	82.48%	17.03%	0.49%	92.87%
ENGL 1102	GSW	*	*	*	*	*	ENGL 1102	372	74.73%	25.00%	0.27%	89.78%
ENGL 1102	KSU	136	72.06%	27.94%	0.00%	88.24%	ENGL 1102	5818	83.77%	15.93%	0.29%	91.78%
ENGL 1102	MGSU	20	55.00%	45.00%	0.00%	75.00%	ENGL 1102	2163	77.12%	22.65%	0.23%	93.25%
ENGL 1102	SGSC	*	*	*	*	*	ENGL 1102	1025	81.46%	17.27%	1.27%	97.07%
ENGL 1102	SSU	42	47.62%	52.38%	0.00%	97.62%	ENGL 1102	1465	62.18%	37.06%	0.75%	95.02%
ENGL 1102	UNG	241	78.84%	21.16%	0.00%	94.61%	ENGL 1102	4058	82.63%	15.48%	1.90%	95.32%
ENGL 1102	UWG	465	76.56%	23.01%	0.43%	93.76%	ENGL 1102	2171	86.78%	13.04%	0.18%	95.76%
ENGL 1102	VSU	171	70.18%	29.82%	0.00%	91.81%	ENGL 1102	1522	73.98%	25.36%	0.66%	89.49%
ENGL 2111		1135	73.22%	26.34%	0.44%	89.43%						
ENGL 2111	AASU	*	*	*	*	*	ENGL 2100	538	80.86%	18.77%	0.37%	92.57%
ENGL 2111	ABAC	38	68.42%	31.58%	0.00%	81.58%	ENGL 2114	142	80.28%	19.72%	0.00%	97.89%
ENGL 2111	AMSC	*	*	*	*	*	ENGL 2111	15	80.00%	20.00%	0.00%	86.67%
ENGL 2111	ASU	19	52.63%	47.37%	0.00%	84.21%	ENGL 2111	601	77.87%	21.96%	0.17%	96.84%
ENGL 2111	BSC	*	*	*	*	*	ENGL 2111	74	78.38%	16.22%	5.41%	91.89%
ENGL 2111	CCGA	34	88.24%	11.76%	0.00%	100.00%	ENGL 2111	295	76.61%	20.68%	2.71%	94.92%
ENGL 2111	CLSU	60	71.67%	26.67%	1.67%	83.33%	ENGL 2111	47	85.11%	14.89%	0.00%	91.49%
ENGL 2111	CSU	76	76.32%	22.37%	1.32%	98.68%	ENGL 2111	239	75.73%	23.85%	0.42%	87.87%
ENGL 2111	DAR	*	*	*	*	*	ENGL 2111	259	72.20%	26.64%	1.16%	88.03%
ENGL 2111	DSC	46	89.13%	10.87%	0.00%	95.65%	ENGL 2111	155	83.87%	14.84%	1.29%	91.61%
ENGL 2111	EGC	*	*	*	*	*	ENGL 2111	179	72.63%	26.26%	1.12%	92.18%

eCore Course

Equivalent Seated Campus Course

eCore Course	Institution	HCT (* = Masked)	Percent Successful Course Completion (Grades A-B-C-S)	Percent Unsuccessful Course Completion (Grades D-F-W)	Percent Incompletion (Grade I)	Percent Course Completion (No Withdrawals)	Equivalent Course	HCT (* = Masked)	Percent Successful Course Completion (Grades A-B-C-S)	Percent Unsuccessful Course Completion (Grades D-F-W-WF-WM-U)	Percent Incompletion (Grade I-NR-NG)	Percent Course Completion (No Withdrawals)
ENGL 2111	GGC	*	*	*	*	*	ENGL 2111	30	76.67%	23.33%	0.00%	93.33%
ENGL 2111	GHC	36	72.22%	27.78%	0.00%	86.11%	ENGL 2111	423	79.43%	20.33%	0.24%	90.78%
ENGL 2111	GOC	28	57.14%	42.86%	0.00%	78.57%	ENGL 2111	86	60.47%	38.37%	1.16%	75.58%
ENGL 2111	GSOU	52	76.92%	23.08%	0.00%	88.46%	ENGL 2111	1703	71.81%	27.83%	0.35%	87.73%
ENGL 2111	GSW	*	*	*	*	*	ENGL 2111	NR	NR	NR	NR	NR
ENGL 2111	KSU	148	72.30%	26.35%	1.35%	89.19%	ENGL 2111	47	85.11%	14.89%	0.00%	95.74%
ENGL 2111	MGSU	45	71.11%	28.89%	0.00%	80.00%	ENGL 2111	956	77.72%	21.76%	0.52%	89.64%
ENGL 2111	SGSC	*	*	*	*	*	ENGL 2111	273	83.88%	15.75%	0.37%	91.58%
ENGL 2111	SSU	31	51.61%	48.39%	0.00%	90.32%	ENGL 2110	232	64.66%	34.05%	1.29%	90.95%
ENGL 2111	UNG	213	77.00%	23.00%	0.00%	91.55%	ENGL 2111	779	81.39%	17.59%	1.03%	91.01%
ENGL 2111	UWG	52	86.54%	13.46%	0.00%	94.23%	ENGL 2110	124	87.90%	12.10%	0.00%	95.16%
ENGL 2111	VSU	173	76.88%	22.54%	0.58%	89.02%	ENGL 2111	407	77.15%	22.36%	0.49%	91.40%
ENGL 2112		485	71.13%	28.66%	0.21%	89.69%						
ENGL 2112	AASU	0	N/A	N/A	N/A	N/A	No Equivalent	-	-	-	-	-
ENGL 2112	ABAC	30	86.67%	13.33%	0.00%	93.33%	ENGL 2115	92	89.13%	10.87%	0.00%	94.57%
ENGL 2112	AMSC	*	*	*	*	*	ENGL 2112	*	*	*	*	*
ENGL 2112	ASU	20	50.00%	50.00%	0.00%	100.00%	ENGL 2112	52	86.54%	13.46%	0.00%	96.15%
ENGL 2112	BSC	0	N/A	N/A	N/A	N/A	ENGL 2112	N/A	N/A	N/A	N/A	N/A
ENGL 2112	CCGA	14	71.43%	28.57%	0.00%	85.71%	ENGL 2112	301	79.07%	16.94%	3.99%	95.35%
ENGL 2112	CLSU	*	*	*	*	*	ENGL 2112	113	75.22%	23.01%	1.77%	86.73%
ENGL 2112	CSU	25	68.00%	32.00%	0.00%	96.00%	ENGL 2112	150	84.00%	14.67%	1.33%	92.67%
ENGL 2112	DAR	*	*	*	*	*	ENGL 2112	100	70.00%	28.00%	2.00%	90.00%
ENGL 2112	DSC	18	88.89%	11.11%	0.00%	94.44%	ENGL 2112	130	80.00%	19.23%	0.77%	90.77%
ENGL 2112	EGC	*	*	*	*	*	ENGL 2112	588	71.26%	28.74%	0.00%	92.52%
ENGL 2112	FVSU	19	42.11%	57.89%	0.00%	89.47%	ENGL 2112	28	42.86%	53.57%	3.57%	100.00%
ENGL 2112	GGC	*	*	*	*	*	ENGL 2112	NR	NR	NR	NR	NR
ENGL 2112	GHC	*	*	*	*	*	ENGL 2112	213	77.46%	22.07%	0.47%	88.73%
ENGL 2112	GOC	*	*	*	*	*	ENGL 2112	78	55.13%	43.59%	1.28%	66.67%
ENGL 2112	GSOU	75	80.00%	20.00%	0.00%	96.00%	ENGL 2112	1943	81.94%	17.81%	0.26%	93.52%
ENGL 2112	GSW	*	*	*	*	*	ENGL 2112	NR	NR	NR	NR	NR
ENGL 2112	KSU	38	57.89%	42.11%	0.00%	78.95%	ENGL 2112	530	81.13%	18.87%	0.00%	90.94%
ENGL 2112	MGSU	*	*	*	*	*	ENGL 2112	361	74.24%	25.76%	0.00%	91.14%
ENGL 2112	SGSC	*	*	*	*	*	ENGL 2112	114	88.60%	9.65%	1.75%	96.49%
ENGL 2112	SSU	*	*	*	*	*	No Equivalent	-	-	-	-	-
ENGL 2112	UNG	68	79.41%	20.59%	0.00%	92.65%	ENGL 2112	458	83.19%	15.94%	0.87%	91.48%
ENGL 2112	UWG	11	81.82%	18.18%	0.00%	81.82%	ENGL 2110	NR	NR	NR	NR	NR
ENGL 2112	VSU	114	65.79%	34.21%	0.00%	81.58%	ENGL 2112	471	83.86%	15.29%	0.85%	96.18%
ENGL 2131		649	72.88%	26.96%	0.15%	88.29%						
ENGL 2131	AASU	*	*	*	*	*	ENGL 2131	40	82.50%	17.50%	0.00%	97.50%

eCore Course

Equivalent Seated Campus Course

eCore Course	Institution	HCT (* = Masked)	Percent Successful Course Completion (Grades A-B-C-S)	Percent Unsuccessful Course Completion (Grades D-F-W)	Percent Incompletion (Grade I)	Percent Course Completion (No Withdrawals)	Equivalent Course	HCT (* = Masked)	Percent Successful Course Completion (Grades A-B-C-S)	Percent Unsuccessful Course Completion (Grades D-F-W-WF-WM-U)	Percent Incompletion (Grade I-NR-NG)	Percent Course Completion (No Withdrawals)
ENGL 2131	ABAC	12	83.33%	16.67%	0.00%	91.67%	ENGL 2131	NR	NR	NR	NR	NR
ENGL 2131	AMSC	*	*	*	*	*	ENGL 2130	18	61.11%	33.33%	5.56%	100.00%
ENGL 2131	ASU	*	*	*	*	*	ENGL 2131	NR	NR	NR	NR	NR
ENGL 2131	BSC	*	*	*	*	*	ENGL 2131	NR	NR	NR	NR	NR
ENGL 2131	CCGA	*	*	*	*	*	No Equivalent	-	-	-	-	-
ENGL 2131	CLSU	43	76.74%	23.26%	0.00%	90.70%	ENGL 2131	153	88.89%	11.11%	0.00%	94.12%
ENGL 2131	CSU	*	*	*	*	*	ENGL 2131	NR	NR	NR	NR	NR
ENGL 2131	DAR	13	69.23%	30.77%	0.00%	76.92%	ENGL 2131	302	72.19%	27.15%	0.66%	90.40%
ENGL 2131	DSC	39	79.49%	20.51%	0.00%	100.00%	ENGL 2130	119	78.15%	20.17%	1.68%	93.28%
ENGL 2131	EGC	0	N/A	N/A	N/A	N/A	No Equivalent	-	-	-	-	-
ENGL 2131	FVSU	*	*	*	*	*	ENGL 2131	NR	NR	NR	NR	NR
ENGL 2131	GGC	*	*	*	*	*	ENGL 2131	44	88.64%	11.36%	0.00%	93.18%
ENGL 2131	GHC	45	80.00%	20.00%	0.00%	84.44%	ENGL 2131	130	81.54%	18.46%	0.00%	87.69%
ENGL 2131	GOC	21	47.62%	52.38%	0.00%	80.95%	ENGL 2131	150	80.67%	18.67%	0.67%	92.67%
ENGL 2131	GSOU	0	N/A	N/A	N/A	N/A	No Equivalent	-	-	-	-	-
ENGL 2131	GSW	13	53.85%	46.15%	0.00%	84.62%	ENGL 2131	NR	NR	NR	NR	NR
ENGL 2131	KSU	68	64.71%	33.82%	1.47%	86.76%	ENGL 2131	NR	NR	NR	NR	NR
ENGL 2131	MGSU	26	65.38%	34.62%	0.00%	84.62%	ENGL 2131	150	79.33%	20.00%	0.67%	90.67%
ENGL 2131	SGSC	*	*	*	*	*	ENGL 2131	102	90.20%	8.82%	0.98%	98.04%
ENGL 2131	SSU	41	36.59%	63.41%	0.00%	78.05%	ENGL 2131	119	75.63%	24.37%	0.00%	98.32%
ENGL 2131	UNG	220	81.36%	18.64%	0.00%	90.00%	ENGL 2131	247	83.81%	16.19%	0.00%	93.12%
ENGL 2131	UWG	57	82.46%	17.54%	0.00%	92.98%	ENGL 2130	181	84.53%	15.47%	0.00%	95.03%
ENGL 2131	VSU	18	66.67%	33.33%	0.00%	83.33%	No Equivalent	-	-	-	-	-
ENGL 2132		264	71.59%	27.27%	1.14%	88.26%						
ENGL 2132	AASU	*	*	*	*	*	ENGL 2132	17	82.35%	17.65%	0.00%	94.12%
ENGL 2132	ABAC	*	*	*	*	*	ENGL 2132	10	70.00%	30.00%	0.00%	80.00%
ENGL 2132	AMSC	*	*	*	*	*	No Equivalent	-	-	-	-	-
ENGL 2132	ASU	*	*	*	*	*	ENGL 2132	NR	NR	NR	NR	NR
ENGL 2132	BSC	*	*	*	*	*	ENGL 2132	*	*	*	*	*
ENGL 2132	CCGA	*	*	*	*	*	No Equivalent	-	-	-	-	-
ENGL 2132	CLSU	*	*	*	*	*	ENGL 2132	179	71.51%	28.49%	0.00%	83.80%
ENGL 2132	CSU	*	*	*	*	*	ENGL 2132	NR	NR	NR	NR	NR
ENGL 2132	DAR	*	*	*	*	*	ENGL 2132	250	67.20%	32.00%	0.80%	90.00%
ENGL 2132	DSC	18	94.44%	5.56%	0.00%	100.00%	ENGL 2131	60	73.33%	21.67%	5.00%	93.33%
ENGL 2132	EGC	0	N/A	N/A	N/A	N/A	No Equivalent	-	-	-	-	-
ENGL 2132	FVSU	*	*	*	*	*	ENGL 2132	NR	NR	NR	NR	NR
ENGL 2132	GGC	0	N/A	N/A	N/A	N/A	ENGL 2132	N/A	N/A	N/A	N/A	N/A
ENGL 2132	GHC	12	58.33%	41.67%	0.00%	83.33%	ENGL 2132	277	79.42%	20.22%	0.36%	92.42%
ENGL 2132	GOC	*	*	*	*	*	ENGL 2132	94	76.60%	23.40%	0.00%	86.17%
ENGL 2132	GSOU	0	N/A	N/A	N/A	N/A	No Equivalent	-	-	-	-	-

eCore Course

Equivalent Seated Campus Course

eCore Course	Institution	HCT (* = Masked)	Percent Successful Course Completion (Grades A-B-C-S)	Percent Unsuccessful Course Completion (Grades D-F-W)	Percent Incompletion (Grade I)	Percent Course Completion (No Withdrawals)	Equivalent Course	HCT (* = Masked)	Percent Successful Course Completion (Grades A-B-C-S)	Percent Unsuccessful Course Completion (Grades D-F-W-WF-WM-U)	Percent Incompletion (Grade I-NR-NG)	Percent Course Completion (No Withdrawals)
ENGL 2132	GSW	*	*	*	*	*	ENGL 2132	NR	NR	NR	NR	NR
ENGL 2132	KSU	34	76.47%	23.53%	0.00%	85.29%	ENGL 2132	416	83.41%	16.35%	0.24%	91.11%
ENGL 2132	MGSU	*	*	*	*	*	ENGL 2132	148	67.57%	32.43%	0.00%	87.16%
ENGL 2132	SGSC	0	N/A	N/A	N/A	N/A	ENGL 2132	N/A	N/A	N/A	N/A	N/A
ENGL 2132	SSU	23	52.17%	47.83%	0.00%	95.65%	ENGL 2132	204	64.22%	35.29%	0.49%	96.08%
ENGL 2132	UNG	108	73.15%	25.93%	0.93%	87.96%	ENGL 2132	425	86.12%	12.00%	1.88%	94.12%
ENGL 2132	UWG	17	82.35%	17.65%	0.00%	94.12%	ENGL 2130	NR	NR	NR	NR	NR
ENGL 2132	VSU	16	68.75%	25.00%	6.25%	93.75%	No Equivalent	-	-	-	-	-
ENVS 2202		957	78.47%	21.32%	0.21%	93.83%						
ENVS 2202	AASU	*	*	*	*	*	No Equivalent	-	-	-	-	-
ENVS 2202	ABAC	29	79.31%	20.69%	0.00%	96.55%	SCIE 1005	388	84.28%	15.72%	0.00%	98.45%
ENVS 2202	AMSC	*	*	*	*	*	BIOL 1104	NR	NR	NR	NR	NR
ENVS 2202	ASU	*	*	*	*	*	No Equivalent	-	-	-	-	-
ENVS 2202	BSC	*	*	*	*	*	BIOL 1050	85	81.18%	16.47%	2.35%	89.41%
ENVS 2202	CCGA	22	72.73%	27.27%	0.00%	86.36%	No Equivalent	-	-	-	-	-
ENVS 2202	CLSU	66	81.82%	16.67%	1.52%	98.48%	No Equivalent	-	-	-	-	-
ENVS 2202	CSU	82	79.27%	20.73%	0.00%	97.56%	No Equivalent	-	-	-	-	-
ENVS 2202	DAR	0	N/A	N/A	N/A	N/A	No Equivalent	-	-	-	-	-
ENVS 2202	DSC	34	94.12%	5.88%	0.00%	100.00%	No Equivalent	-	-	-	-	-
ENVS 2202	EGC	0	N/A	N/A	N/A	N/A	No Equivalent	-	-	-	-	-
ENVS 2202	FVSU	11	45.45%	54.55%	0.00%	90.91%	ENVS 2202	NR	NR	NR	NR	NR
ENVS 2202	GGC	0	N/A	N/A	N/A	N/A	No Equivalent	-	-	-	-	-
ENVS 2202	GHC	14	78.57%	21.43%	0.00%	100.00%	GHSC 2901	*	*	*	*	*
ENVS 2202	GOC	10	70.00%	30.00%	0.00%	80.00%	BIOL 1011	59	74.58%	25.42%	0.00%	93.22%
ENVS 2202	GSOU	*	*	*	*	*	No Equivalent	-	-	-	-	-
ENVS 2202	GSW	24	75.00%	25.00%	0.00%	100.00%	ENVS 1100	26	88.46%	11.54%	0.00%	96.15%
ENVS 2202	KSU	163	76.69%	23.31%	0.00%	88.96%	SCI 1102	2654	85.31%	14.66%	0.04%	95.74%
ENVS 2202	MGSU	*	*	*	*	*	No Equivalent	-	-	-	-	-
ENVS 2202	SGSC	*	*	*	*	*	SCIE 1111	212	82.55%	16.51%	0.94%	97.64%
ENVS 2202	SSU	12	66.67%	33.33%	0.00%	100.00%	ENVS 2401	36	100.00%	0.00%	0.00%	100.00%
ENVS 2202	UNG	48	79.17%	20.83%	0.00%	97.92%	BIOL 1260	1091	83.13%	15.31%	1.56%	94.32%
ENVS 2202	UWG	250	79.60%	20.00%	0.40%	94.00%	No Equivalent	-	-	-	-	-
ENVS 2202	VSU	161	81.37%	18.63%	0.00%	91.93%	No Equivalent	-	-	-	-	-
ETEC 1101		117	86.32%	13.68%	0.00%	98.29%						
ETEC 1101	AASU	0	N/A	N/A	N/A	N/A	No Equivalent	-	-	-	-	-
ETEC 1101	ABAC	*	*	*	*	*	No Equivalent	-	-	-	-	-
ETEC 1101	AMSC	0	N/A	N/A	N/A	N/A	No Equivalent	-	-	-	-	-
ETEC 1101	ASU	*	*	*	*	*	No Equivalent	-	-	-	-	-
ETEC 1101	BSC	0	N/A	N/A	N/A	N/A	No Equivalent	-	-	-	-	-

eCore Course

Equivalent Seated Campus Course

eCore Course	Institution	HCT (* = Masked)	Percent Successful Course Completion (Grades A-B-C-S)	Percent Unsuccessful Course Completion (Grades D-F-W)	Percent Incompletion (Grade I)	Percent Course Completion (No Withdrawals)	Equivalent Course	HCT (* = Masked)	Percent Successful Course Completion (Grades A-B-C-S)	Percent Unsuccessful Course Completion (Grades D-F-W-WF-WM-U)	Percent Incompletion (Grade I-NR-NG)	Percent Course Completion (No Withdrawals)
ETEC 1101	CCGA	0	N/A	N/A	N/A	N/A	No Equivalent	-	-	-	-	-
ETEC 1101	CLSU	*	*	*	*	*	No Equivalent	-	-	-	-	-
ETEC 1101	CSU	*	*	*	*	*	No Equivalent	-	-	-	-	-
ETEC 1101	DAR	0	N/A	N/A	N/A	N/A	No Equivalent	-	-	-	-	-
ETEC 1101	DSC	19	94.74%	5.26%	0.00%	100.00%	No Equivalent	-	-	-	-	-
ETEC 1101	EGC	0	N/A	N/A	N/A	N/A	No Equivalent	-	-	-	-	-
ETEC 1101	FVSU	*	*	*	*	*	ETEC 1101	NR	NR	NR	NR	NR
ETEC 1101	GGC	0	N/A	N/A	N/A	N/A	No Equivalent	-	-	-	-	-
ETEC 1101	GHC	*	*	*	*	*	No Equivalent	-	-	-	-	-
ETEC 1101	GOC	*	*	*	*	*	No Equivalent	-	-	-	-	-
ETEC 1101	GSOU	0	N/A	N/A	N/A	N/A	No Equivalent	-	-	-	-	-
ETEC 1101	GSW	0	N/A	N/A	N/A	N/A	No Equivalent	-	-	-	-	-
ETEC 1101	KSU	*	*	*	*	*	No Equivalent	-	-	-	-	-
ETEC 1101	MGSU	*	*	*	*	*	No Equivalent	-	-	-	-	-
ETEC 1101	SGSC	0	N/A	N/A	N/A	N/A	No Equivalent	-	-	-	-	-
ETEC 1101	SSU	*	*	*	*	*	No Equivalent	-	-	-	-	-
ETEC 1101	UNG	*	*	*	*	*	No Equivalent	-	-	-	-	-
ETEC 1101	UWG	12	75.00%	25.00%	0.00%	91.67%	No Equivalent	-	-	-	-	-
ETEC 1101	VSU	50	90.00%	10.00%	0.00%	98.00%	No Equivalent	-	-	-	-	-
GEOL 1011K		616	62.66%	37.18%	0.16%	80.84%						
GEOL 1011K	AASU	*	*	*	*	*	No Equivalent	-	-	-	-	-
GEOL 1011K	ABAC	*	*	*	*	*	No Equivalent	-	-	-	-	-
GEOL 1011K	AMSC	*	*	*	*	*	GEOL 1121	NR	NR	NR	NR	NR
GEOL 1011K	AMSC	-	-	-	-	-	GLAB 1121	NR	NR	NR	NR	NR
GEOL 1011K	ASU	0	N/A	N/A	N/A	N/A	GEOL 1011K	N/A	N/A	N/A	N/A	N/A
GEOL 1011K	BSC	*	*	*	*	*	No Equivalent	-	-	-	-	-
GEOL 1011K	CCGA	11	54.55%	45.45%	0.00%	81.82%	No Equivalent	-	-	-	-	-
GEOL 1011K	CLSU	24	45.83%	54.17%	0.00%	70.83%	No Equivalent	-	-	-	-	-
GEOL 1011K	CSU	36	61.11%	38.89%	0.00%	83.33%	GEOL 1011K	NR	NR	NR	NR	NR
GEOL 1011K	DAR	0	N/A	N/A	N/A	N/A	No Equivalent	-	-	-	-	-
GEOL 1011K	DSC	44	75.00%	25.00%	0.00%	93.18%	No Equivalent	-	-	-	-	-
GEOL 1011K	EGC	0	N/A	N/A	N/A	N/A	No Equivalent	-	-	-	-	-
GEOL 1011K	FVSU	*	*	*	*	*	GEOL 1101K	NR	NR	NR	NR	NR
GEOL 1011K	GGC	0	N/A	N/A	N/A	N/A	No Equivalent	-	-	-	-	-
GEOL 1011K	GHC	*	*	*	*	*	GEOL 1121K	352	79.26%	20.74%	0.00%	91.19%
GEOL 1011K	GOC	*	*	*	*	*	GEOL 1121K	NR	NR	NR	NR	NR
GEOL 1011K	GSOU	*	*	*	*	*	GEOL 1121	896	41.74%	8.15%	50.11%	97.32%
GEOL 1011K	GSW	19	68.42%	31.58%	0.00%	73.68%	No Equivalent	-	-	-	-	-
GEOL 1011K	KSU	59	69.49%	30.51%	0.00%	83.05%	SCI 1101	3686	77.92%	21.92%	0.16%	93.92%
GEOL 1011K	MGSU	33	48.48%	51.52%	0.00%	72.73%	No Equivalent	-	-	-	-	-

eCore Course

Equivalent Seated Campus Course

eCore Course	Institution	HCT (* = Masked)	Percent Successful Course Completion (Grades A-B-C-S)	Percent Unsuccessful Course Completion (Grades D-F-W)	Percent Incompletion (Grade I)	Percent Course Completion (No Withdrawals)	Equivalent Course	HCT (* = Masked)	Percent Successful Course Completion (Grades A-B-C-S)	Percent Unsuccessful Course Completion (Grades D-F-W-WF-WM-U)	Percent Incompletion (Grade I-NR-NG)	Percent Course Completion (No Withdrawals)
GEOL 1011K	SGSC	*	*	*	*	*	No Equivalent	-	-	-	-	-
GEOL 1011K	SSU	*	*	*	*	*	GEOL 1121K	NR	NR	NR	NR	NR
GEOL 1011K	UNG	79	67.09%	32.91%	0.00%	87.34%	GEOL 1121K	355	89.58%	10.42%	0.00%	94.37%
GEOL 1011K	UWG	100	64.00%	35.00%	1.00%	84.00%	GEOL 1121	683	80.23%	19.77%	0.00%	97.22%
GEOL 1011K	UWG	-	-	-	-	-	GEOL 1121L	361	76.45%	23.55%	0.00%	93.91%
GEOL 1011K	VSU	171	63.16%	36.84%	0.00%	78.95%	No Equivalent	-	-	-	-	-
HIST 1111		1744	72.42%	27.24%	0.34%	91.40%						
HIST 1111	AASU	20	80.00%	15.00%	5.00%	100.00%	HIST 1111	NR	NR	NR	NR	NR
HIST 1111	ABAC	21	76.19%	23.81%	0.00%	85.71%	HIST 1111	36	86.11%	13.89%	0.00%	100.00%
HIST 1111	AMSC	*	*	*	*	*	HIST 1111	47	68.09%	29.79%	2.13%	100.00%
HIST 1111	ASU	22	68.18%	31.82%	0.00%	86.36%	HIST 1111	237	85.65%	13.50%	0.84%	98.31%
HIST 1111	BSC	0	N/A	N/A	N/A	N/A	HIST 1111	N/A	N/A	N/A	N/A	N/A
HIST 1111	CCGA	19	84.21%	15.79%	0.00%	100.00%	HIST 1001	NR	NR	NR	NR	NR
HIST 1111	CLSU	92	68.48%	31.52%	0.00%	83.70%	HIST 1111	516	66.47%	33.53%	0.00%	89.92%
HIST 1111	CSU	134	79.85%	20.15%	0.00%	96.27%	HIST 1111	210	80.00%	20.00%	0.00%	95.71%
HIST 1111	DAR	*	*	*	*	*	HIST 1111	523	62.91%	36.52%	0.57%	82.22%
HIST 1111	DSC	45	84.44%	15.56%	0.00%	100.00%	HIST 1111	161	70.81%	29.19%	0.00%	93.17%
HIST 1111	EGC	0	N/A	N/A	N/A	N/A	HIST 1111	N/A	N/A	N/A	N/A	N/A
HIST 1111	FVSU	82	57.32%	41.46%	1.22%	86.59%	HIST 1111	297	70.71%	29.29%	0.00%	96.30%
HIST 1111	GGC	14	50.00%	50.00%	0.00%	92.86%	HIST 1111	583	78.56%	21.27%	0.17%	90.91%
HIST 1111	GHC	92	75.00%	25.00%	0.00%	93.48%	HIST 1111	306	83.66%	16.34%	0.00%	95.42%
HIST 1111	GOC	11	81.82%	18.18%	0.00%	100.00%	HIST 1121	646	68.42%	31.27%	0.31%	86.53%
HIST 1111	GSOU	12	75.00%	25.00%	0.00%	91.67%	HIST 1111	109	79.82%	18.35%	1.83%	92.66%
HIST 1111	GSW	13	84.62%	15.38%	0.00%	92.31%	HIST 1111	270	90.74%	8.52%	0.74%	95.93%
HIST 1111	KSU	206	70.39%	29.13%	0.49%	85.92%	HIST 1111	1296	74.92%	24.85%	0.23%	90.28%
HIST 1111	MGSU	22	72.73%	27.27%	0.00%	86.36%	HIST 1111	400	67.75%	32.25%	0.00%	92.00%
HIST 1111	SGSC	*	*	*	*	*	HIST 1111	30	46.67%	50.00%	3.33%	90.00%
HIST 1111	SSU	29	37.93%	58.62%	3.45%	96.55%	HIST 1111	158	64.56%	34.18%	1.27%	98.73%
HIST 1111	UNG	318	72.64%	27.36%	0.00%	92.14%	HIST 1111	638	70.22%	28.21%	1.57%	89.50%
HIST 1111	UWG	525	75.24%	24.38%	0.38%	92.76%	HIST 1111	1174	76.06%	23.85%	0.09%	94.21%
HIST 1111	VSU	49	55.10%	44.90%	0.00%	83.67%	HIST 1011	93	70.97%	27.96%	1.08%	91.40%
HIST 2111		1996	73.00%	26.75%	0.25%	92.89%						
HIST 2111	AASU	*	*	*	*	*	HIST 2111	136	69.85%	28.68%	1.47%	91.18%
HIST 2111	ABAC	61	75.41%	24.59%	0.00%	91.80%	HIST 2111	436	83.03%	16.74%	0.23%	96.79%
HIST 2111	AMSC	19	47.37%	52.63%	0.00%	100.00%	HIST 2111	495	66.46%	32.12%	1.41%	95.35%
HIST 2111	ASU	19	63.16%	36.84%	0.00%	100.00%	HIST 2111	87	88.51%	11.49%	0.00%	98.85%
HIST 2111	BSC	*	*	*	*	*	HIST 2111	387	67.18%	31.01%	1.81%	92.25%
HIST 2111	CCGA	75	78.67%	21.33%	0.00%	97.33%	HIST 2111	594	71.38%	24.41%	4.21%	94.44%
HIST 2111	CLSU	86	73.26%	25.58%	1.16%	93.02%	HIST 2111	609	81.94%	17.73%	0.33%	93.43%
HIST 2111	CSU	165	74.55%	25.45%	0.00%	93.33%	HIST 2111	794	73.43%	26.07%	0.50%	91.94%

eCore Course

Equivalent Seated Campus Course

eCore Course	Institution	HCT (* = Masked)	Percent Successful Course Completion (Grades A-B-C-S)	Percent Unsuccessful Course Completion (Grades D-F-W)	Percent Incompletion (Grade I)	Percent Course Completion (No Withdrawals)	Equivalent Course	HCT (* = Masked)	Percent Successful Course Completion (Grades A-B-C-S)	Percent Unsuccessful Course Completion (Grades D-F-W-WF-WM-U)	Percent Incompletion (Grade I-NR-NG)	Percent Course Completion (No Withdrawals)
HIST 2111	DAR	*	*	*	*	*	HIST 2111	537	73.56%	26.07%	0.37%	90.69%
HIST 2111	DSC	92	72.83%	27.17%	0.00%	96.74%	HIST 2111	642	75.39%	23.99%	0.62%	94.86%
HIST 2111	EGC	0	N/A	N/A	N/A	N/A	HIST 2111	N/A	N/A	N/A	N/A	N/A
HIST 2111	FVSU	58	63.79%	36.21%	0.00%	98.28%	HIST 2111	131	26.72%	73.28%	0.00%	73.28%
HIST 2111	GGC	20	60.00%	40.00%	0.00%	90.00%	HIST 2111	2335	76.79%	23.08%	0.13%	94.43%
HIST 2111	GHC	99	69.70%	30.30%	0.00%	88.89%	HIST 2111	988	73.48%	26.21%	0.30%	89.17%
HIST 2111	GOC	56	66.07%	33.93%	0.00%	83.93%	HIST 2111	708	78.67%	21.19%	0.14%	92.37%
HIST 2111	GSOU	10	80.00%	20.00%	0.00%	90.00%	HIST 2110	3232	81.10%	18.72%	0.19%	94.15%
HIST 2111	GSW	12	91.67%	8.33%	0.00%	100.00%	HIST 2111	134	72.39%	26.87%	0.75%	84.33%
HIST 2111	KSU	106	78.30%	21.70%	0.00%	93.40%	HIST 2111	1460	83.49%	16.44%	0.07%	93.01%
HIST 2111	MGSU	57	61.40%	38.60%	0.00%	92.98%	HIST 2111	945	64.97%	34.92%	0.11%	90.58%
HIST 2111	SGSC	*	*	*	*	*	HIST 2111	390	68.46%	30.77%	0.77%	97.69%
HIST 2111	SSU	115	55.65%	41.74%	2.61%	93.91%	HIST 2111	526	85.36%	14.07%	0.57%	96.20%
HIST 2111	UNG	328	73.78%	26.22%	0.00%	89.63%	HIST 2111	1904	74.16%	23.74%	2.10%	91.44%
HIST 2111	UWG	370	76.49%	23.24%	0.27%	93.78%	HIST 2111	1045	79.43%	20.48%	0.10%	96.27%
HIST 2111	VSU	231	79.65%	20.35%	0.00%	93.94%	HIST 2111	668	76.05%	23.20%	0.75%	95.21%
MATH 1101		422	61.85%	38.15%	0.00%	83.41%						
MATH 1101	AASU	0	N/A	N/A	N/A	N/A	MATH 1001	N/A	N/A	N/A	N/A	N/A
MATH 1101	ABAC	*	*	*	*	*	No Equivalent	-	-	-	-	-
MATH 1101	AMSC	*	*	*	*	*	MATH 1101	29	72.41%	10.34%	17.24%	96.55%
MATH 1101	ASU	*	*	*	*	*	MATH 1101	42	64.29%	35.71%	0.00%	97.62%
MATH 1101	BSC	0	N/A	N/A	N/A	N/A	MATH 1001	N/A	N/A	N/A	N/A	N/A
MATH 1101	CCGA	*	*	*	*	*	No Equivalent	-	-	-	-	-
MATH 1101	CLSU	52	61.54%	38.46%	0.00%	84.62%	MATH 1101	636	63.36%	36.32%	0.31%	94.03%
MATH 1101	CSU	24	54.17%	45.83%	0.00%	66.67%	MATH 1101	333	75.98%	23.72%	0.30%	90.09%
MATH 1101	DAR	*	*	*	*	*	No Equivalent	-	-	-	-	-
MATH 1101	DSC	*	*	*	*	*	MATH 1101	463	62.20%	36.50%	1.30%	88.55%
MATH 1101	EGC	*	*	*	*	*	No Equivalent	-	-	-	-	-
MATH 1101	FVSU	12	16.67%	83.33%	0.00%	58.33%	MATH 1101	208	69.23%	29.81%	0.96%	94.71%
MATH 1101	GGC	0	N/A	N/A	N/A	N/A	No Equivalent	-	-	-	-	-
MATH 1101	GHC	*	*	*	*	*	MATH 1001	982	70.98%	28.92%	0.10%	92.16%
MATH 1101	GOC	*	*	*	*	*	MATH 1101	NR	NR	NR	NR	NR
MATH 1101	GSOU	*	*	*	*	*	MATH 1101	483	77.43%	22.57%	0.00%	89.65%
MATH 1101	GSW	*	*	*	*	*	MATH 1101	64	43.75%	56.25%	0.00%	70.31%
MATH 1101	KSU	30	53.33%	46.67%	0.00%	73.33%	MATH 1101	995	71.86%	28.04%	0.10%	88.94%
MATH 1101	MGSU	53	71.70%	28.30%	0.00%	88.68%	MATH 1101	2130	62.30%	37.37%	0.33%	93.99%
MATH 1101	SGSC	0	N/A	N/A	N/A	N/A	No Equivalent	-	-	-	-	-
MATH 1101	SSU	*	*	*	*	*	MATH 1101	298	67.11%	30.20%	2.68%	93.96%
MATH 1101	UNG	78	74.36%	25.64%	0.00%	87.18%	MATH 1101	339	82.01%	15.93%	2.06%	93.81%
MATH 1101	UWG	32	53.13%	46.88%	0.00%	87.50%	MATH 1001	688	78.49%	21.37%	0.15%	95.78%

eCore Course

Equivalent Seated Campus Course

eCore Course	Institution	HCT (* = Masked)	Percent Successful Course Completion (Grades A-B-C-S)	Percent Unsuccessful Course Completion (Grades D-F-W)	Percent Incompletion (Grade I)	Percent Course Completion (No Withdrawals)	Equivalent Course	HCT (* = Masked)	Percent Successful Course Completion (Grades A-B-C-S)	Percent Unsuccessful Course Completion (Grades D-F-W-WF-WM-U)	Percent Incompletion (Grade I-NR-NG)	Percent Course Completion (No Withdrawals)
MATH 1101	VSU	85	63.53%	36.47%	0.00%	81.18%	MATH 1101	494	59.31%	40.08%	0.61%	84.62%
MATH 1111		1123	64.47%	35.53%	0.00%	88.33%						
MATH 1111	AASU	*	*	*	*	*	MATH 1111	992	57.86%	41.94%	0.20%	90.73%
MATH 1111	ABAC	57	68.42%	31.58%	0.00%	94.74%	MATH 1111	1284	50.78%	49.07%	0.16%	88.71%
MATH 1111	AMSC	*	*	*	*	*	MATH 1111	1408	54.12%	43.04%	2.84%	95.24%
MATH 1111	ASU	12	75.00%	25.00%	0.00%	91.67%	MATH 1111	561	64.88%	34.94%	0.18%	96.61%
MATH 1111	BSC	*	*	*	*	*	MATH 1111	511	74.56%	22.70%	2.74%	89.82%
MATH 1111	CCGA	38	57.89%	42.11%	0.00%	94.74%	MATH 1111	806	57.44%	37.34%	5.21%	95.41%
MATH 1111	CLSU	61	75.41%	24.59%	0.00%	88.52%	MATH 1111	724	63.40%	36.60%	0.00%	93.37%
MATH 1111	CSU	50	64.00%	36.00%	0.00%	88.00%	MATH 1111	858	80.19%	19.58%	0.23%	93.59%
MATH 1111	DAR	*	*	*	*	*	MATH 1111	1392	50.00%	48.99%	1.01%	83.12%
MATH 1111	DSC	30	76.67%	23.33%	0.00%	100.00%	MATH 1111	1147	62.77%	35.57%	1.66%	86.05%
MATH 1111	EGC	0	N/A	N/A	N/A	N/A	MATH 1111	N/A	N/A	N/A	N/A	N/A
MATH 1111	FVSU	24	41.67%	58.33%	0.00%	83.33%	MATH 1111	316	51.90%	47.78%	0.32%	93.35%
MATH 1111	GGC	14	78.57%	21.43%	0.00%	92.86%	MATH 1111	2580	62.83%	36.94%	0.23%	91.82%
MATH 1111	GHC	23	43.48%	56.52%	0.00%	82.61%	MATH 1111	NR	NR	NR	NR	NR
MATH 1111	GOC	34	61.76%	38.24%	0.00%	85.29%	MATH 1111	1118	55.64%	44.28%	0.09%	81.57%
MATH 1111	GSOU	29	68.97%	31.03%	0.00%	89.66%	MATH 1111	2787	71.30%	28.56%	0.14%	91.07%
MATH 1111	GSW	11	54.55%	45.45%	0.00%	81.82%	MATH 1111	505	71.68%	28.12%	0.20%	92.28%
MATH 1111	KSU	141	55.32%	44.68%	0.00%	75.89%	MATH 1111	3638	67.95%	31.89%	0.16%	87.66%
MATH 1111	MGSU	71	67.61%	32.39%	0.00%	91.55%	MATH 1111	650	67.38%	32.46%	0.15%	91.08%
MATH 1111	SGSC	*	*	*	*	*	MATH 1111	1053	72.27%	27.07%	0.66%	94.87%
MATH 1111	SSU	43	46.51%	53.49%	0.00%	90.70%	MATH 1111	1337	59.69%	39.12%	1.20%	92.30%
MATH 1111	UNG	209	74.16%	25.84%	0.00%	90.43%	MATH 1111	3985	64.02%	33.93%	2.06%	88.01%
MATH 1111	UWG	193	60.62%	39.38%	0.00%	88.60%	MATH 1111	2022	71.51%	28.34%	0.15%	92.04%
MATH 1111	VSU	63	73.02%	26.98%	0.00%	93.65%	MATH 1111	1227	69.68%	29.83%	0.49%	92.50%
MATH 1113		896	57.70%	42.19%	0.11%	86.05%						
MATH 1113	AASU	*	*	*	*	*	MATH 1113	642	55.30%	44.24%	0.47%	84.58%
MATH 1113	ABAC	13	61.54%	38.46%	0.00%	76.92%	MATH 1113	37	48.65%	51.35%	0.00%	70.27%
MATH 1113	AMSC	10	20.00%	80.00%	0.00%	70.00%	MATH 1113	319	67.08%	31.97%	0.94%	93.10%
MATH 1113	ASU	31	45.16%	54.84%	0.00%	90.32%	MATH 1113	380	72.89%	27.11%	0.00%	92.63%
MATH 1113	BSC	*	*	*	*	*	MATH 1113	206	93.69%	4.85%	1.46%	97.57%
MATH 1113	CCGA	18	44.44%	55.56%	0.00%	77.78%	MATH 1113	72	70.83%	26.39%	2.78%	91.67%
MATH 1113	CLSU	25	88.00%	12.00%	0.00%	92.00%	MATH 1113	100	82.00%	18.00%	0.00%	94.00%
MATH 1113	CSU	35	65.71%	34.29%	0.00%	88.57%	MATH 1113	481	71.52%	27.65%	0.83%	90.85%
MATH 1113	DAR	14	50.00%	50.00%	0.00%	71.43%	MATH 1113	103	76.70%	22.33%	0.97%	90.29%
MATH 1113	DSC	26	65.38%	34.62%	0.00%	96.15%	MATH 1113	429	75.99%	22.14%	1.86%	86.48%
MATH 1113	EGC	0	N/A	N/A	N/A	N/A	MATH 1113	N/A	N/A	N/A	N/A	N/A
MATH 1113	FVSU	12	50.00%	50.00%	0.00%	75.00%	MATH 1113	177	58.76%	41.24%	0.00%	88.14%

eCore Course

Equivalent Seated Campus Course

eCore Course	Institution	HCT (* = Masked)	Percent Successful Course Completion (Grades A-B-C-S)	Percent Unsuccessful Course Completion (Grades D-F-W)	Percent Incompletion (Grade I)	Percent Course Completion (No Withdrawals)	Equivalent Course	HCT (* = Masked)	Percent Successful Course Completion (Grades A-B-C-S)	Percent Unsuccessful Course Completion (Grades D-F-W-WF-WM-U)	Percent Incompletion (Grade I-NR-NG)	Percent Course Completion (No Withdrawals)
MATH 1113	GGC	*	*	*	*	*	MATH 1113	1447	63.37%	36.49%	0.14%	88.11%
MATH 1113	GHC	16	43.75%	56.25%	0.00%	75.00%	MATH 1113	713	67.46%	32.40%	0.14%	84.29%
MATH 1113	GOC	36	50.00%	50.00%	0.00%	77.78%	MATH 1113	464	49.14%	50.65%	0.22%	78.02%
MATH 1113	GSOU	25	56.00%	44.00%	0.00%	92.00%	MATH 1113	215	57.21%	42.79%	0.00%	89.30%
MATH 1113	GSW	*	*	*	*	*	MATH 1113	211	57.35%	42.65%	0.00%	80.57%
MATH 1113	KSU	206	62.14%	37.86%	0.00%	85.44%	MATH 1113	2396	59.81%	40.03%	0.17%	87.31%
MATH 1113	MGSU	16	62.50%	37.50%	0.00%	87.50%	MATH 1113	101	75.25%	24.75%	0.00%	91.09%
MATH 1113	SGSC	*	*	*	*	*	MATH 1113	203	87.19%	12.32%	0.49%	95.57%
MATH 1113	SSU	57	33.33%	66.67%	0.00%	82.46%	MATH 1113	925	66.70%	31.57%	1.73%	93.41%
MATH 1113	UNG	113	69.03%	30.97%	0.00%	84.07%	MATH 1113	2508	67.78%	30.26%	1.95%	89.23%
MATH 1113	UWG	186	53.23%	46.77%	0.00%	89.78%	MATH 1113	896	74.55%	25.22%	0.22%	94.31%
MATH 1113	VSU	28	78.57%	17.86%	3.57%	92.86%	MATH 1113	189	59.79%	39.15%	1.06%	79.89%
MATH 1401		741	62.48%	37.52%	0.00%	85.02%						
MATH 1401	AASU	*	*	*	*	*	MATH 2200	1172	69.28%	30.63%	0.09%	91.81%
MATH 1401	ABAC	22	45.45%	54.55%	0.00%	77.27%	MATH 2000	281	79.72%	20.28%	0.00%	91.81%
MATH 1401	AMSC	*	*	*	*	*	MATH 1114	334	83.53%	16.47%	0.00%	96.11%
MATH 1401	ASU	*	*	*	*	*	MATH 2411	197	78.68%	20.81%	0.51%	97.46%
MATH 1401	BSC	*	*	*	*	*	MATH 2001	75	89.33%	9.33%	1.33%	96.00%
MATH 1401	CCGA	39	46.15%	53.85%	0.00%	84.62%	MATH 2112	665	64.51%	32.78%	2.71%	93.83%
MATH 1401	CLSU	66	57.58%	42.42%	0.00%	81.82%	MATH 1231	1003	67.50%	32.10%	0.40%	90.23%
MATH 1401	CSU	23	60.87%	39.13%	0.00%	78.26%	MATH 1401	NR	NR	NR	NR	NR
MATH 1401	DAR	13	46.15%	53.85%	0.00%	76.92%	MATH 2205	767	61.67%	37.81%	0.52%	90.35%
MATH 1401	DSC	41	63.41%	36.59%	0.00%	92.68%	MATH 2200	409	83.37%	16.14%	0.49%	95.11%
MATH 1401	EGC	0	N/A	N/A	N/A	N/A	MATH 1121	N/A	N/A	N/A	N/A	N/A
MATH 1401	FVSU	*	*	*	*	*	MATH 2113	68	70.59%	29.41%	0.00%	98.53%
MATH 1401	GGC	*	*	*	*	*	MATH 2000	1236	78.07%	21.60%	0.32%	92.56%
MATH 1401	GHC	14	64.29%	35.71%	0.00%	71.43%	MATH 2200	1168	74.57%	25.34%	0.09%	89.13%
MATH 1401	GOC	*	*	*	*	*	MATH 2101	419	63.48%	36.28%	0.24%	86.87%
MATH 1401	GSOU	*	*	*	*	*	STAT 2231	1627	79.47%	20.41%	0.12%	91.52%
MATH 1401	GSW	*	*	*	*	*	MATH 2204	279	73.84%	26.16%	0.00%	89.96%
MATH 1401	KSU	101	74.26%	25.74%	0.00%	85.15%	MATH 1107	3107	79.92%	19.95%	0.13%	92.85%
MATH 1401	MGSU	21	61.90%	38.10%	0.00%	85.71%	MATH 1200	1695	73.51%	26.37%	0.12%	93.98%
MATH 1401	SGSC	15	66.67%	33.33%	0.00%	93.33%	MATH 2280	328	74.70%	25.30%	0.00%	93.29%
MATH 1401	SSU	*	*	*	*	*	MATH 2201	86	77.91%	18.60%	3.49%	95.35%
MATH 1401	UNG	131	70.23%	29.77%	0.00%	88.55%	MATH 2400	2858	80.65%	17.84%	1.50%	93.53%
MATH 1401	UWG	122	68.85%	31.15%	0.00%	88.52%	MATH 2063	661	88.05%	11.95%	0.00%	98.34%
MATH 1401	VSU	80	60.00%	40.00%	0.00%	81.25%	MATH 2620	668	81.74%	17.96%	0.30%	93.11%
MATH 1501		420	52.38%	47.62%	0.00%	80.71%						
MATH 1501	AASU	*	*	*	*	*	MATH 1161	270	51.11%	48.15%	0.74%	80.74%

eCore Course

Equivalent Seated Campus Course

eCore Course	Institution	HCT (* = Masked)	Percent Successful Course Completion (Grades A-B-C-S)	Percent Unsuccessful Course Completion (Grades D-F-W)	Percent Incompletion (Grade I)	Percent Course Completion (No Withdrawals)	Equivalent Course	HCT (* = Masked)	Percent Successful Course Completion (Grades A-B-C-S)	Percent Unsuccessful Course Completion (Grades D-F-W-WF-WM-U)	Percent Incompletion (Grade I-NR-NG)	Percent Course Completion (No Withdrawals)
MATH 1501	ABAC	*	*	*	*	*	MATH 2053	129	82.95%	17.05%	0.00%	97.67%
MATH 1501	AMSC	*	*	*	*	*	MATH 2201	166	68.07%	28.31%	3.61%	94.58%
MATH 1501	ASU	*	*	*	*	*	MATH 1211	133	79.70%	19.55%	0.75%	97.74%
MATH 1501	BSC	0	N/A	N/A	N/A	N/A	MATH 2261	N/A	N/A	N/A	N/A	N/A
MATH 1501	CCGA	12	41.67%	58.33%	0.00%	75.00%	MATH 1121	127	62.20%	34.65%	3.15%	85.83%
MATH 1501	CLSU	23	56.52%	43.48%	0.00%	86.96%	MATH 1501	197	60.41%	39.59%	0.00%	78.17%
MATH 1501	CSU	*	*	*	*	*	MATH 1131	179	67.60%	32.40%	0.00%	93.30%
MATH 1501	DAR	*	*	*	*	*	No Equivalent	-	-	-	-	-
MATH 1501	DSC	14	64.29%	35.71%	0.00%	100.00%	MATH 2253	300	69.33%	30.33%	0.33%	90.00%
MATH 1501	EGC	*	*	*	*	*	MATH 1540	39	61.54%	38.46%	0.00%	89.74%
MATH 1501	FVSU	19	31.58%	68.42%	0.00%	89.47%	MATH 1154	142	47.18%	52.11%	0.70%	80.99%
MATH 1501	GGC	*	*	*	*	*	MATH 2200	899	62.18%	37.60%	0.22%	90.10%
MATH 1501	GHC	21	23.81%	76.19%	0.00%	47.62%	MATH 2261	183	66.12%	33.88%	0.00%	85.25%
MATH 1501	GOC	10	60.00%	40.00%	0.00%	80.00%	MATH 1501	124	43.55%	55.65%	0.81%	64.52%
MATH 1501	GSOU	*	*	*	*	*	MATH 1441	1387	64.96%	34.90%	0.14%	87.53%
MATH 1501	GSW	*	*	*	*	*	MATH 1120	57	54.39%	43.86%	1.75%	85.96%
MATH 1501	KSU	119	58.82%	41.18%	0.00%	81.51%	MATH 1190	2779	63.69%	36.13%	0.18%	85.68%
MATH 1501	MGSU	14	50.00%	50.00%	0.00%	92.86%	MATH 1251	286	68.88%	31.12%	0.00%	88.81%
MATH 1501	SGSC	*	*	*	*	*	MATH 2253	74	70.27%	29.73%	0.00%	91.89%
MATH 1501	SSU	11	45.45%	54.55%	0.00%	81.82%	MATH 2101	378	62.17%	37.04%	0.79%	88.36%
MATH 1501	UNG	46	54.35%	45.65%	0.00%	82.61%	MATH 1501	NR	NR	NR	NR	NR
MATH 1501	UWG	77	48.05%	51.95%	0.00%	77.92%	MATH 1634	466	53.65%	46.35%	0.00%	81.12%
MATH 1501	VSU	15	53.33%	46.67%	0.00%	80.00%	MATH 2261	436	62.61%	36.47%	0.92%	88.07%
PHIL 2010		1131	64.54%	35.46%	0.00%	85.59%						
PHIL 2010	AASU	11	72.73%	27.27%	0.00%	100.00%	PHIL 2010	590	83.05%	16.95%	0.00%	94.92%
PHIL 2010	ABAC	*	*	*	*	*	No Equivalent	-	-	-	-	-
PHIL 2010	AMSC	*	*	*	*	*	PHIL 2201	33	36.36%	63.64%	0.00%	87.88%
PHIL 2010	ASU	10	30.00%	70.00%	0.00%	80.00%	PHIL 2101	33	75.76%	24.24%	0.00%	90.91%
PHIL 2010	BSC	*	*	*	*	*	PHIL 1000	NR	NR	NR	NR	NR
PHIL 2010	CCGA	47	59.57%	40.43%	0.00%	82.98%	PHIL 2010	116	71.55%	24.14%	4.31%	93.97%
PHIL 2010	CLSU	70	61.43%	38.57%	0.00%	88.57%	PHIL 2010	316	80.06%	19.94%	0.00%	90.82%
PHIL 2010	CSU	104	65.38%	34.62%	0.00%	94.23%	PHIL 2010	434	79.49%	20.05%	0.46%	90.78%
PHIL 2010	DAR	*	*	*	*	*	PHIL 2010	95	76.84%	21.05%	2.11%	91.58%
PHIL 2010	DSC	27	74.07%	25.93%	0.00%	100.00%	PHIL 2010	93	82.80%	15.05%	2.15%	94.62%
PHIL 2010	EGC	*	*	*	*	*	No Equivalent	-	-	-	-	-
PHIL 2010	FVSU	39	58.97%	41.03%	0.00%	84.62%	PHIL 2010	163	52.76%	47.24%	0.00%	84.66%
PHIL 2010	GGC	*	*	*	*	*	PHIL 2010	179	75.98%	24.02%	0.00%	88.83%
PHIL 2010	GHC	40	45.00%	55.00%	0.00%	75.00%	PHIL 2010	517	65.57%	34.43%	0.00%	87.23%
PHIL 2010	GOC	51	60.78%	39.22%	0.00%	80.39%	PHIL 2010	147	63.27%	36.73%	0.00%	83.67%
PHIL 2010	GSOU	24	62.50%	37.50%	0.00%	83.33%	PHIL 2010	455	81.76%	17.36%	0.88%	92.75%

eCore Course

Equivalent Seated Campus Course

eCore Course	Institution	HCT (* = Masked)	Percent Successful Course Completion (Grades A-B-C-S)	Percent Unsuccessful Course Completion (Grades D-F-W)	Percent Incompletion (Grade I)	Percent Course Completion (No Withdrawals)	Equivalent Course	HCT (* = Masked)	Percent Successful Course Completion (Grades A-B-C-S)	Percent Unsuccessful Course Completion (Grades D-F-W-WF-WM-U)	Percent Incompletion (Grade I-NR-NG)	Percent Course Completion (No Withdrawals)
PHIL 2010	GSW	*	*	*	*	*	No Equivalent	-	-	-	-	-
PHIL 2010	KSU	43	53.49%	46.51%	0.00%	83.72%	PHIL 2200	837	65.23%	34.17%	0.60%	82.20%
PHIL 2010	MGSU	16	62.50%	37.50%	0.00%	75.00%	No Equivalent	-	-	-	-	-
PHIL 2010	SGSC	*	*	*	*	*	PHIL 1104	NR	NR	NR	NR	NR
PHIL 2010	SSU	25	48.00%	52.00%	0.00%	96.00%	RPHS 2101	NR	NR	NR	NR	NR
PHIL 2010	UNG	179	69.27%	30.73%	0.00%	84.36%	PHIL 2010	370	84.05%	13.78%	2.16%	94.05%
PHIL 2010	UWG	332	70.78%	29.22%	0.00%	86.45%	PHIL 2010	428	78.74%	21.03%	0.23%	92.52%
PHIL 2010	VSU	83	65.06%	34.94%	0.00%	80.72%	PHIL 2010	280	79.29%	20.36%	0.36%	93.93%
PHYS 1211K		145	49.66%	50.34%	0.00%	71.72%						
PHYS 1211K	AASU	*	*	*	*	*	PHYS 2211	NR	NR	NR	NR	NR
PHYS 1211K	AASU	-	-	-	-	-	PHYS 2211L	NR	NR	NR	NR	NR
PHYS 1211K	ABAC	0	N/A	N/A	N/A	N/A	PHYS 2211	N/A	N/A	N/A	N/A	N/A
PHYS 1211K	ABAC	0	N/A	N/A	N/A	N/A	PHYS 2211L	N/A	N/A	N/A	N/A	N/A
PHYS 1211K	AMSC	0	N/A	N/A	N/A	N/A	PHYS 2211	N/A	N/A	N/A	N/A	N/A
PHYS 1211K	AMSC	0	N/A	N/A	N/A	N/A	PLAB 2211	N/A	N/A	N/A	N/A	N/A
PHYS 1211K	ASU	*	*	*	*	*	PHYS 1211K	NR	NR	NR	NR	NR
PHYS 1211K	BSC	0	N/A	N/A	N/A	N/A	PHYS 2211K	N/A	N/A	N/A	N/A	N/A
PHYS 1211K	CCGA	*	*	*	*	*	PHYS 2211	15	80.00%	13.33%	6.67%	100.00%
PHYS 1211K	CLSU	*	*	*	*	*	PHYS 2211	72	66.67%	31.94%	1.39%	90.28%
PHYS 1211K	CLSU	-	-	-	-	-	PHYS 2211L	66	83.33%	16.67%	0.00%	90.91%
PHYS 1211K	CSU	*	*	*	*	*	PHYS 1211K	NR	NR	NR	NR	NR
PHYS 1211K	DAR	*	*	*	*	*	PHYS 2211K	33	84.85%	15.15%	0.00%	87.88%
PHYS 1211K	DSC	*	*	*	*	*	PHYS 2211K	81	71.60%	27.16%	1.23%	82.72%
PHYS 1211K	EGC	*	*	*	*	*	No Equivalent	-	-	-	-	-
PHYS 1211K	FVSU	*	*	*	*	*	PHYS 1211K	NR	NR	NR	NR	NR
PHYS 1211K	GGC	0	N/A	N/A	N/A	N/A	PHYS 2211K	N/A	N/A	N/A	N/A	N/A
PHYS 1211K	GHC	*	*	*	*	*	PHYS 2211K	22	54.55%	40.91%	4.55%	81.82%
PHYS 1211K	GOC	*	*	*	*	*	PHYS 2211K	27	92.59%	7.41%	0.00%	92.59%
PHYS 1211K	GSOU	*	*	*	*	*	PHYS 2211	800	63.25%	36.75%	0.00%	81.25%
PHYS 1211K	GSW	0	N/A	N/A	N/A	N/A	PHYS 2211	N/A	N/A	N/A	N/A	N/A
PHYS 1211K	KSU	68	55.88%	44.12%	0.00%	66.18%	PHYS 2211	1017	61.55%	38.35%	0.10%	86.04%
PHYS 1211K	KSU	-	-	-	-	-	PHYS 2211L	NR	NR	NR	NR	NR
PHYS 1211K	MGSU	*	*	*	*	*	PHYS 2211K	NR	NR	NR	NR	NR
PHYS 1211K	SGSC	*	*	*	*	*	PHYS 2211K	23	69.57%	26.09%	4.35%	100.00%
PHYS 1211K	SSU	*	*	*	*	*	PHYS 2211K	44	86.36%	13.64%	0.00%	100.00%
PHYS 1211K	UNG	13	38.46%	61.54%	0.00%	69.23%	PHYS 2211	295	71.53%	25.42%	3.05%	87.46%
PHYS 1211K	UNG	-	-	-	-	-	PHYS 2211L	NR	NR	NR	NR	NR
PHYS 1211K	UWG	13	53.85%	46.15%	0.00%	69.23%	PHYS 2211	105	63.81%	36.19%	0.00%	87.62%
PHYS 1211K	UWG	-	-	-	-	-	PHYS 2211L	96	77.08%	22.92%	0.00%	86.46%
PHYS 1211K	VSU	*	*	*	*	*	PHYS 2211K	173	50.87%	47.40%	1.73%	75.72%

eCore Course

Equivalent Seated Campus Course

eCore Course	Institution	HCT (* = Masked)	Percent Successful Course Completion (Grades A-B-C-S)	Percent Unsuccessful Course Completion (Grades D-F-W)	Percent Incompletion (Grade I)	Percent Course Completion (No Withdrawals)	Equivalent Course	HCT (* = Masked)	Percent Successful Course Completion (Grades A-B-C-S)	Percent Unsuccessful Course Completion (Grades D-F-W-WF-WM-U)	Percent Incompletion (Grade I-NR-NG)	Percent Course Completion (No Withdrawals)
POLS 1101		1927	81.37%	18.63%	0.00%	94.97%						
POLS 1101	AASU	*	*	*	*	*	POLS 1100	552	89.31%	9.60%	1.09%	96.74%
POLS 1101	ABAC	46	78.26%	21.74%	0.00%	91.30%	POLS 1101	980	84.90%	15.10%	0.00%	97.55%
POLS 1101	AMSC	*	*	*	*	*	POLS 1101	954	64.05%	34.07%	1.89%	96.86%
POLS 1101	ASU	15	80.00%	20.00%	0.00%	93.33%	POLS 1101	457	89.28%	6.13%	4.60%	97.81%
POLS 1101	BSC	*	*	*	*	*	POLS 1101	487	77.82%	19.10%	3.08%	97.33%
POLS 1101	CCGA	70	82.86%	17.14%	0.00%	95.71%	POLS 1101	827	74.12%	20.31%	5.56%	96.86%
POLS 1101	CLSU	102	85.29%	14.71%	0.00%	96.08%	POLS 1101	1287	78.48%	21.45%	0.08%	94.25%
POLS 1101	CSU	112	84.82%	15.18%	0.00%	98.21%	POLS 1101	1648	75.85%	20.51%	3.64%	95.45%
POLS 1101	DAR	*	*	*	*	*	POLS 1101	1524	82.22%	17.32%	0.46%	96.59%
POLS 1101	DSC	82	87.80%	12.20%	0.00%	97.56%	POLS 1101	1261	80.49%	18.16%	1.35%	92.78%
POLS 1101	EGC	*	*	*	*	*	POLS 1101	1425	72.63%	26.95%	0.42%	96.77%
POLS 1101	FVSU	77	80.52%	19.48%	0.00%	96.10%	POLS 1101	344	91.57%	8.43%	0.00%	97.67%
POLS 1101	GGC	46	71.74%	28.26%	0.00%	100.00%	POLS 1101	2899	78.68%	20.63%	0.69%	95.31%
POLS 1101	GHC	78	80.77%	19.23%	0.00%	92.31%	POLS 1101	1938	81.94%	17.85%	0.21%	94.84%
POLS 1101	GOC	25	68.00%	32.00%	0.00%	92.00%	POLS 1101	453	62.25%	37.53%	0.22%	88.52%
POLS 1101	GSOU	74	89.19%	10.81%	0.00%	98.65%	POLS 1101	3334	82.06%	17.64%	0.30%	94.60%
POLS 1101	GSW	12	75.00%	25.00%	0.00%	91.67%	POLS 1101	398	66.83%	32.91%	0.25%	90.20%
POLS 1101	KSU	240	77.92%	22.08%	0.00%	93.33%	POLS 1101	6201	81.05%	18.63%	0.32%	93.94%
POLS 1101	MGSU	69	71.01%	28.99%	0.00%	88.41%	POLS 1101	2126	70.65%	28.93%	0.42%	91.39%
POLS 1101	SGSC	*	*	*	*	*	POLS 1101	966	70.50%	29.30%	0.21%	96.27%
POLS 1101	SSU	30	56.67%	43.33%	0.00%	90.00%	POLS 1101	1316	65.96%	30.70%	3.34%	95.67%
POLS 1101	UNG	258	85.27%	14.73%	0.00%	94.57%	POLS 1101	2794	86.58%	12.06%	1.36%	96.78%
POLS 1101	UWG	300	83.33%	16.67%	0.00%	97.00%	POLS 1101	2481	80.57%	19.19%	0.24%	96.09%
POLS 1101	VSU	261	81.61%	18.39%	0.00%	93.49%	POLS 1101	1526	76.93%	22.67%	0.39%	95.54%
PSYC 1101		1267	74.74%	25.18%	0.08%	92.03%						
PSYC 1101	AASU	*	*	*	*	*	PSYC 1101	809	78.74%	21.01%	0.25%	94.56%
PSYC 1101	ABAC	62	74.19%	25.81%	0.00%	91.94%	PSYC 1101	515	78.83%	20.78%	0.39%	96.50%
PSYC 1101	AMSC	*	*	*	*	*	PSYC 1101	644	64.91%	33.23%	1.86%	97.05%
PSYC 1101	ASU	15	60.00%	40.00%	0.00%	100.00%	PSYC 1101	374	82.62%	17.11%	0.27%	93.58%
PSYC 1101	BSC	*	*	*	*	*	PSYC 1101	483	59.21%	36.65%	4.14%	88.41%
PSYC 1101	CCGA	41	92.68%	7.32%	0.00%	95.12%	PSYC 1101	900	74.89%	19.67%	5.44%	96.33%
PSYC 1101	CLSU	29	65.52%	34.48%	0.00%	86.21%	PSYC 1101	686	82.22%	17.78%	0.00%	93.88%
PSYC 1101	CSU	43	74.42%	25.58%	0.00%	93.02%	PSYC 1101	876	79.68%	19.06%	1.26%	94.86%
PSYC 1101	DAR	0	N/A	N/A	N/A	N/A	PSYC 1101	N/A	N/A	N/A	N/A	N/A
PSYC 1101	DSC	59	79.66%	20.34%	0.00%	94.92%	PSYC 1101	1059	73.75%	25.12%	1.13%	92.16%
PSYC 1101	EGC	0	N/A	N/A	N/A	N/A	PSYC 1101	N/A	N/A	N/A	N/A	N/A
PSYC 1101	FVSU	46	67.39%	32.61%	0.00%	89.13%	PSYC 1101	271	80.81%	18.08%	1.11%	96.31%
PSYC 1101	GGC	14	42.86%	50.00%	7.14%	92.86%	PSYC 1102	NR	NR	NR	NR	NR
PSYC 1101	GHC	54	57.41%	42.59%	0.00%	85.19%	PSYC 1101	1205	83.24%	16.68%	0.08%	94.02%

eCore Course

Equivalent Seated Campus Course

eCore Course	Institution	HCT (* = Masked)	Percent Successful Course Completion (Grades A-B-C-S)	Percent Unsuccessful Course Completion (Grades D-F-W)	Percent Incompletion (Grade I)	Percent Course Completion (No Withdrawals)	Equivalent Course	HCT (* = Masked)	Percent Successful Course Completion (Grades A-B-C-S)	Percent Unsuccessful Course Completion (Grades D-F-W-WF-WM-U)	Percent Incompletion (Grade I-NR-NG)	Percent Course Completion (No Withdrawals)
PSYC 1101	GOC	37	75.68%	24.32%	0.00%	89.19%	PSYC 1101	752	72.47%	27.13%	0.40%	90.43%
PSYC 1101	GSOU	20	70.00%	30.00%	0.00%	90.00%	PSYC 1101	2246	84.59%	15.27%	0.13%	95.90%
PSYC 1101	GSW	*	*	*	*	*	PSYC 1101	301	80.07%	19.27%	0.66%	96.35%
PSYC 1101	KSU	82	79.27%	20.73%	0.00%	89.02%	PSYC 1101	2387	77.34%	22.41%	0.25%	91.75%
PSYC 1101	MGSU	40	70.00%	30.00%	0.00%	90.00%	PSYC 1101	1911	75.56%	23.97%	0.47%	95.29%
PSYC 1101	SGSC	*	*	*	*	*	PSYC 1101	1013	69.50%	29.32%	1.18%	95.76%
PSYC 1101	SSU	77	61.04%	38.96%	0.00%	92.21%	PSYC 1101	400	58.25%	41.00%	0.75%	94.75%
PSYC 1101	UNG	227	78.85%	21.15%	0.00%	90.75%	PSYC 1101	3801	80.29%	18.31%	1.39%	95.74%
PSYC 1101	UWG	202	74.26%	25.74%	0.00%	95.54%	PSYC 1101	1608	80.78%	19.03%	0.19%	96.64%
PSYC 1101	VSU	198	81.31%	18.69%	0.00%	93.43%	PSYC 1101	954	84.38%	15.51%	0.10%	94.76%
SOCI 1101		1296	73.30%	26.54%	0.15%	92.28%						
SOCI 1101	AASU	*	*	*	*	*	SOCI 1101	601	79.70%	17.64%	2.66%	98.00%
SOCI 1101	ABAC	40	72.50%	27.50%	0.00%	90.00%	SOCI 1101	359	72.70%	27.30%	0.00%	94.99%
SOCI 1101	AMSC	*	*	*	*	*	SOCI 1101	467	74.95%	22.91%	2.14%	97.86%
SOCI 1101	ASU	20	20.00%	80.00%	0.00%	80.00%	SOCI 1101	NR	NR	NR	NR	NR
SOCI 1101	BSC	*	*	*	*	*	SOCI 1101	222	74.77%	21.17%	4.05%	94.59%
SOCI 1101	CCGA	50	68.00%	32.00%	0.00%	92.00%	SOCI 1101	364	80.22%	16.76%	3.02%	96.43%
SOCI 1101	CLSU	31	87.10%	12.90%	0.00%	96.77%	SOCI 1101	573	74.00%	26.00%	0.00%	92.67%
SOCI 1101	CSU	53	66.04%	33.96%	0.00%	92.45%	SOCI 1101	759	84.19%	15.68%	0.13%	95.78%
SOCI 1101	DAR	*	*	*	*	*	SOCI 1101	627	84.05%	15.31%	0.64%	94.90%
SOCI 1101	DSC	62	74.19%	25.81%	0.00%	95.16%	SOCI 1101	226	74.78%	24.34%	0.88%	84.07%
SOCI 1101	EGC	*	*	*	*	*	SOCI 1101	1010	70.40%	29.21%	0.40%	96.53%
SOCI 1101	FVSU	53	69.81%	30.19%	0.00%	88.68%	SOCI 1101	210	91.43%	8.57%	0.00%	98.10%
SOCI 1101	GGC	*	*	*	*	*	SOCI 1101	1165	82.58%	17.08%	0.34%	95.97%
SOCI 1101	GHC	46	76.09%	23.91%	0.00%	91.30%	SOCI 1101	771	78.60%	21.01%	0.39%	93.13%
SOCI 1101	GOC	29	55.17%	44.83%	0.00%	89.66%	SOCI 1101	826	83.66%	15.98%	0.36%	92.62%
SOCI 1101	GSOU	19	68.42%	31.58%	0.00%	100.00%	SOCI 1101	1893	80.24%	19.60%	0.16%	95.03%
SOCI 1101	GSW	10	70.00%	30.00%	0.00%	100.00%	SOCI 1101	315	76.19%	23.49%	0.32%	95.56%
SOCI 1101	KSU	61	70.49%	29.51%	0.00%	83.61%	SOCI 1101	1108	78.16%	21.48%	0.36%	91.70%
SOCI 1101	MGSU	43	69.77%	27.91%	2.33%	95.35%	SOCI 1101	687	88.36%	11.64%	0.00%	96.51%
SOCI 1101	SGSC	*	*	*	*	*	SOCI 1101	752	83.24%	15.43%	1.33%	97.21%
SOCI 1101	SSU	41	68.29%	31.71%	0.00%	95.12%	SOCI 1101	350	66.29%	33.43%	0.29%	98.57%
SOCI 1101	UNG	341	82.99%	16.72%	0.29%	96.19%	SOCI 1101	1883	84.65%	14.02%	1.33%	96.76%
SOCI 1101	UWG	186	72.04%	27.96%	0.00%	90.32%	SOCI 1101	754	81.96%	18.04%	0.00%	93.77%
SOCI 1101	VSU	180	71.11%	28.89%	0.00%	89.44%	SOCI 1101	770	87.14%	12.60%	0.26%	96.10%
SPAN 2001		385	58.18%	41.56%	0.26%	82.86%						
SPAN 2001	AASU	*	*	*	*	*	SPAN 2001	NR	NR	NR	NR	NR
SPAN 2001	ABAC	*	*	*	*	*	SPAN 2001	NR	NR	NR	NR	NR
SPAN 2001	AMSC	*	*	*	*	*	SPAN 2001	26	65.38%	30.77%	3.85%	92.31%

eCore Course

Equivalent Seated Campus Course

eCore Course	Institution	HCT (* = Masked)	Percent Successful Course Completion (Grades A-B-C-S)	Percent Unsuccessful Course Completion (Grades D-F-W)	Percent Incompletion (Grade I)	Percent Course Completion (No Withdrawals)	Equivalent Course	HCT (* = Masked)	Percent Successful Course Completion (Grades A-B-C-S)	Percent Unsuccessful Course Completion (Grades D-F-W-WF-WM-U)	Percent Incompletion (Grade I-NR-NG)	Percent Course Completion (No Withdrawals)
SPAN 2001	ASU	*	*	*	*	*	SPAN 2001	10	90.00%	10.00%	0.00%	100.00%
SPAN 2001	BSC	0	N/A	N/A	N/A	N/A	SPAN 2001	N/A	N/A	N/A	N/A	N/A
SPAN 2001	CCGA	*	*	*	*	*	SPAN 2001	42	95.24%	2.38%	2.38%	100.00%
SPAN 2001	CLSU	24	58.33%	41.67%	0.00%	87.50%	SPAN 2001	158	86.71%	12.66%	0.63%	93.04%
SPAN 2001	CSU	36	72.22%	27.78%	0.00%	91.67%	SPAN 2001	160	81.88%	18.13%	0.00%	90.63%
SPAN 2001	DAR	*	*	*	*	*	SPAN 2001	27	88.89%	11.11%	0.00%	100.00%
SPAN 2001	DSC	*	*	*	*	*	SPAN 2001	*	*	*	*	*
SPAN 2001	EGC	0	N/A	N/A	N/A	N/A	SPAN 2001	N/A	N/A	N/A	N/A	N/A
SPAN 2001	FVSU	62	46.77%	53.23%	0.00%	85.48%	SPAN 2001	166	81.93%	17.47%	0.60%	93.98%
SPAN 2001	GGC	*	*	*	*	*	SPAN 2001	98	92.86%	7.14%	0.00%	97.96%
SPAN 2001	GHC	*	*	*	*	*	SPAN 2001	20	70.00%	30.00%	0.00%	80.00%
SPAN 2001	GOC	*	*	*	*	*	SPAN 2001	32	81.25%	18.75%	0.00%	93.75%
SPAN 2001	GSOU	*	*	*	*	*	SPAN 2001	442	81.00%	19.00%	0.00%	90.27%
SPAN 2001	GSW	*	*	*	*	*	SPAN 2001	*	*	*	*	*
SPAN 2001	KSU	22	45.45%	54.55%	0.00%	72.73%	SPAN 2001	330	69.09%	30.91%	0.00%	86.97%
SPAN 2001	MGSU	11	54.55%	45.45%	0.00%	72.73%	SPAN 2001	27	85.19%	14.81%	0.00%	92.59%
SPAN 2001	SGSC	0	N/A	N/A	N/A	N/A	SPAN 2001	N/A	N/A	N/A	N/A	N/A
SPAN 2001	SSU	*	*	*	*	*	SPAN 2001	20	70.00%	30.00%	0.00%	95.00%
SPAN 2001	UNG	50	74.00%	26.00%	0.00%	88.00%	SPAN 2001	167	91.02%	7.78%	1.20%	96.41%
SPAN 2001	UWG	82	67.07%	31.71%	1.22%	84.15%	SPAN 2001	214	87.38%	12.62%	0.00%	96.26%
SPAN 2001	VSU	41	58.54%	41.46%	0.00%	80.49%	SPAN 2001	390	80.51%	18.72%	0.77%	89.49%
SPAN 2002		233	69.96%	30.04%	0.00%	91.85%						
SPAN 2002	AASU	*	*	*	*	*	SPAN 2002	103	89.32%	9.71%	0.97%	98.06%
SPAN 2002	ABAC	*	*	*	*	*	SPAN 2002	NR	NR	NR	NR	NR
SPAN 2002	AMSC	0	N/A	N/A	N/A	N/A	SPAN 2002	N/A	N/A	N/A	N/A	N/A
SPAN 2002	ASU	*	*	*	*	*	SPAN 2002	*	*	*	*	*
SPAN 2002	BSC	0	N/A	N/A	N/A	N/A	SPAN 2002	N/A	N/A	N/A	N/A	N/A
SPAN 2002	CCGA	*	*	*	*	*	SPAN 2002	*	*	*	*	*
SPAN 2002	CLSU	16	62.50%	37.50%	0.00%	87.50%	SPAN 2002	82	92.68%	7.32%	0.00%	95.12%
SPAN 2002	CSU	*	*	*	*	*	SPAN 2002	70	82.86%	15.71%	1.43%	94.29%
SPAN 2002	DAR	*	*	*	*	*	SPAN 2002	27	85.19%	14.81%	0.00%	96.30%
SPAN 2002	DSC	*	*	*	*	*	SPAN 2002	*	*	*	*	*
SPAN 2002	EGC	0	N/A	N/A	N/A	N/A	SPAN 2002	N/A	N/A	N/A	N/A	N/A
SPAN 2002	FVSU	*	*	*	*	*	SPAN 2002	*	*	*	*	*
SPAN 2002	GGC	0	N/A	N/A	N/A	N/A	SPAN 2002	N/A	N/A	N/A	N/A	N/A
SPAN 2002	GHC	*	*	*	*	*	SPAN 2002	*	*	*	*	*
SPAN 2002	GOC	*	*	*	*	*	SPAN 2002	25	88.00%	12.00%	0.00%	100.00%
SPAN 2002	GSOU	0	N/A	N/A	N/A	N/A	SPAN 2002	N/A	N/A	N/A	N/A	N/A
SPAN 2002	GSW	0	N/A	N/A	N/A	N/A	SPAN 2002	N/A	N/A	N/A	N/A	N/A
SPAN 2002	KSU	13	69.23%	30.77%	0.00%	92.31%	SPAN 2002	267	80.52%	18.73%	0.75%	92.13%

eCore Course

Equivalent Seated Campus Course

eCore Course	Institution	HCT (* = Masked)	Percent Successful Course Completion (Grades A-B-C-S)	Percent Unsuccessful Course Completion (Grades D-F-W)	Percent Incompletion (Grade I)	Percent Course Completion (No Withdrawals)	Equivalent Course	HCT (* = Masked)	Percent Successful Course Completion (Grades A-B-C-S)	Percent Unsuccessful Course Completion (Grades D-F-W-WF-WM-U)	Percent Incompletion (Grade I-NR-NG)	Percent Course Completion (No Withdrawals)
SPAN 2002	MGSU	*	*	*	*	*	SPAN 2002	*	*	*	*	*
SPAN 2002	SGSC	0	N/A	N/A	N/A	N/A	SPAN 2002	N/A	N/A	N/A	N/A	N/A
SPAN 2002	SSU	*	*	*	*	*	SPAN 2002	16	100.00%	0.00%	0.00%	100.00%
SPAN 2002	UNG	49	81.63%	18.37%	0.00%	95.92%	SPAN 2002	79	96.20%	2.53%	1.27%	100.00%
SPAN 2002	UWG	86	67.44%	32.56%	0.00%	89.53%	SPAN 2002	161	71.43%	28.57%	0.00%	88.82%
SPAN 2002	VSU	25	56.00%	44.00%	0.00%	92.00%	SPAN 2002	198	83.33%	16.67%	0.00%	90.40%

Semester Credit Hours Generated

Title	FY 2007	FY 2008	FY 2009	FY 2010	FY 2011	FY 2012	FY2013	FY 2014	FY 2015	FY 2016
American Government	1446	1368	1158	867	1143	1647	1782	2010	2979	5781
American Literature I	NT	NT	NT	NT	NT	NT	NT	NT	621	1947
American Literature II	438	267	384	255	363	585	633	663	945	792
Calculus I	204	220	252	268	212	444	572	628	1384	1680
Chemistry I	232	212	196	296	324	628	584	740	1152	1612
Chemistry II	136	120	132	244	180	304	360	280	512	820
College Algebra	699	618	660	681	846	1209	1332	1680	2145	3369
Elect. Tech. in Ed. Environments	40	30	24	54	112	60	60	74	114	234
English Composition I	579	627	495	555	888	1095	1089	1323	1773	2940
English Composition II	825	735	849	909	1008	1824	1992	2373	3237	5022
Geosciences I	744	600	696	424	548	736	1048	1288	1928	2464
Human Communications	702	624	672	657	798	1143	1353	1725	2232	3990
Environmental Science	213	234	276	258	336	456	702	954	1695	2871
Intermediate Spanish I	108	150	147	342	363	459	471	516	684	1155
Intermediate Spanish II	45	96	138	186	237	372	327	288	525	699
Math Modeling	246	234	234	192	252	492	558	618	873	1266
Philosophy	597	657	678	678	702	894	1062	1527	1908	3393
Physics I	124	168	132	136	156	236	204	252	356	580
Physics II	16	20	NT	NT	NT	NT	NT	NT	NT	NT
Pre-Calculus	501	387	411	504	612	1002	1095	1296	1983	2688
Psychology	1167	969	846	816	900	1314	1542	1536	2259	3801
Sociology	870	954	789	855	981	1389	1440	1857	2496	3888
Statistics	438	402	393	405	519	819	891	1188	1785	2223
U. S. History I	1350	1386	1494	1335	1530	1977	2043	2358	3744	5988
World History I	1413	1551	1464	1518	1725	2460	2622	2463	3264	5232
World Literature I	855	828	687	579	747	1698	1788	2196	2805	3405
World Literature II	NT	NT	NT	NT	NT	NT	NT	NT	444	1455
Total Credit Hours Generated	13988	13457	13207	13014	15482	23243	25550	29833	43843	69295

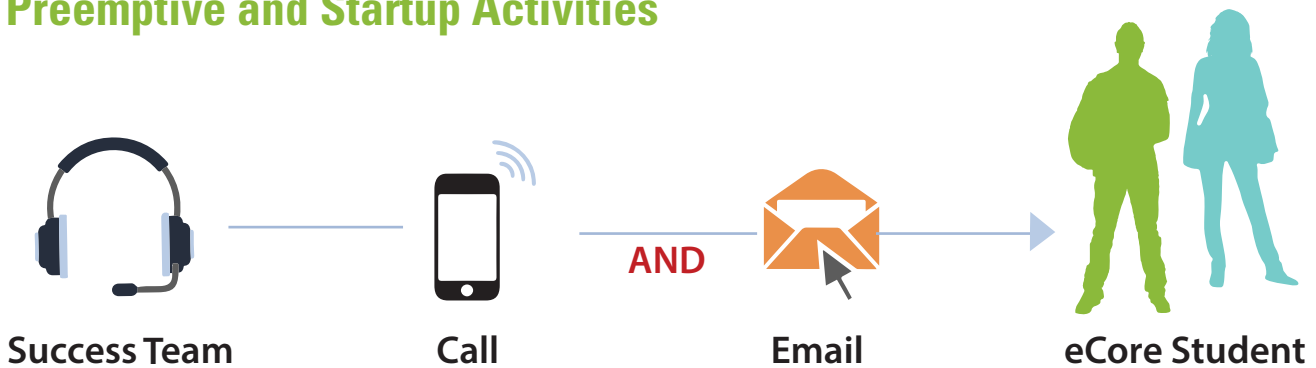
NT = Course Not Taught

Student Engagement and Success

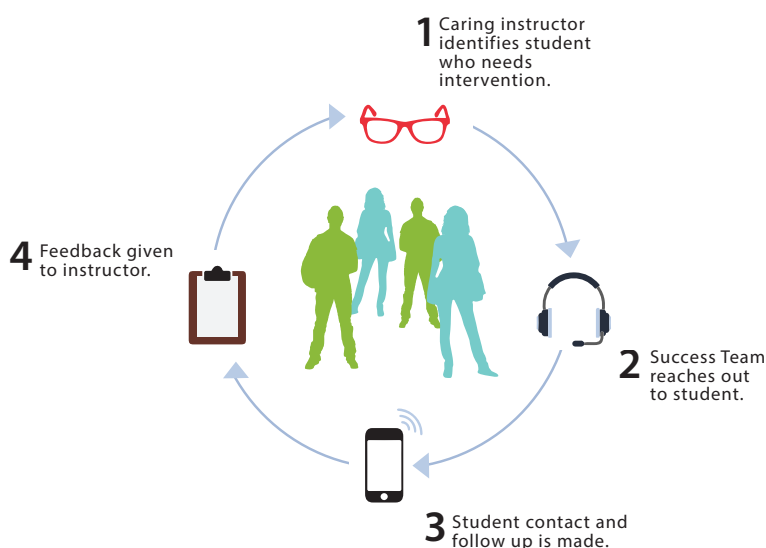
eCore has a clearly defined process for supporting and assisting students toward full engagement and success in eCore coursework. This process includes providing students with access to academic resources and online tutoring options. The eCore intervention process has become one of the hallmarks of the program. This model provides professors an opportunity to report students on a weekly basis and allows the eCore Student Success Team to reach out and contact students to provide resource solutions. This closes the loop back to the professor on the follow-up process. If a student does choose to withdraw from an eCore course, a withdrawal survey is requested to gather data on the student’s eCore learning experience, and the Student Success Team will contact the student about the withdrawal to provide details and options for an informed decision.

Afterwards, the Student Success Team members will provide feedback regarding communication with students to professors in order for them to remain informed and able to accurately follow up with at-risk students.

Preemptive and Startup Activities



Saving Our Students



Smarthinking Online Tutoring

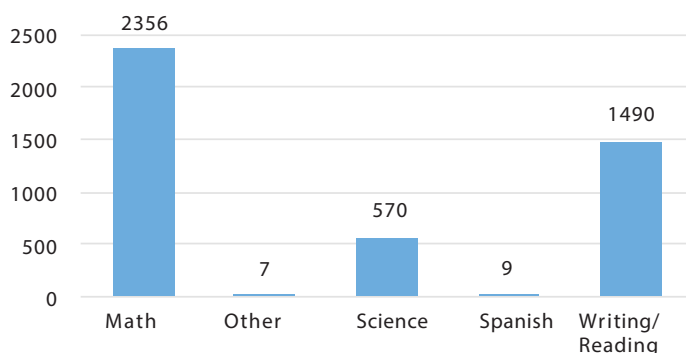
The Smarthinking online tutoring service is available to all eCore students for the duration of the term. This service is available to students on a 24x7 basis. Smarthinking tutors typically have nine or more years of teaching or tutoring experience, and approximately 90% of the tutors have advanced degrees in their fields. Smarthinking adheres to the Socratic tutoring method.

- The Smarthinking online tutoring service is designed for students who are taking core academic courses.
- Online learning assistance is available from tutors in a variety of subjects, including Mathematics, Statistics, Spanish, Chemistry, Physics, and writing for all subjects.
- Since FY 2010, eCore has tracked the Smarthinking usage each semester.
- There were 734 distinct users who accessed Smarthinking during FY 2016.
- For FY 2016, there were 4432 tutoring sessions made by eCore students via Smarthinking with 2775 hours of total usage, which is an 11% increase in the number of sessions from FY 2015 and an 11% increase in the total hours of usage.
- The greatest amount of time and sessions were generated in the Essay Center during FY 2016, with a total of 1162 sessions and 821 hours.

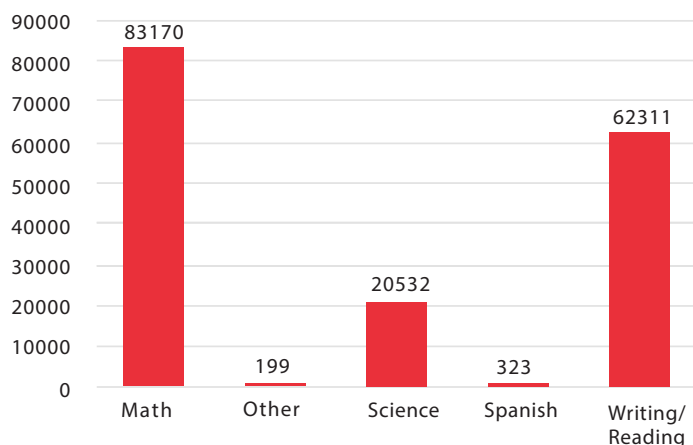
Smarthinking Session Visits

Subject	Total Sessions	Minutes
Algebra	652	23691
Algebra w/ Audio	2	74
Basic Math Skills	32	1188
Calculus Single Variable	949	34090
Calculus Single Variable w/ Audio	1	74
Career Writing	1	42
Essay Center	1162	49266
General Chemistry	315	11574
Geometry & Trigonometry	175	6521
Grammar & Documentation Review	142	6384
Intro A&P	1	37
Intro Accounting	3	98
IT Support Word	1	28
Liberal Arts Math	2	41
Linear Algebra	2	54
Live Essay Review with Audio	3	111
Microeconomics Principles	1	53
Organic Chemistry	2	56
Paragraph Submission	18	486
Physics	252	8865
Problem & Solution	2	20
Reading	4	91
Research and Documentation	5	137
Resume or Cover Letter	2	84
Spanish	7	249
Spanish w/ Audio	2	74
Statistics	541	17437
Writing (All Subjects)	126	4711
Writing (All Subjects) w/ Audio	27	999
Totals	4432	166535
Total in Hours		2775

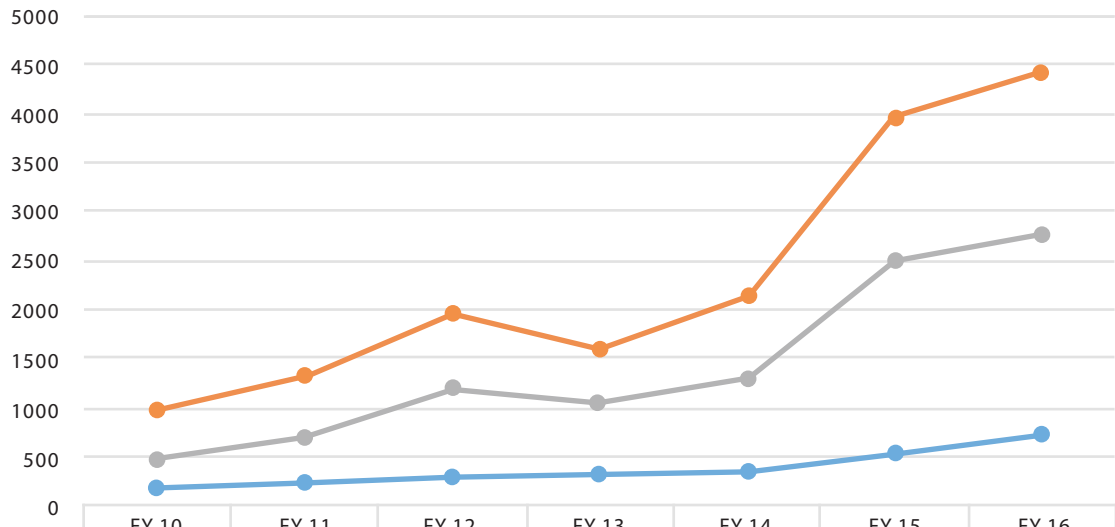
Number of Sessions Accessed per Subject



Minutes Used/Time Spent per Subject



Historical Smarthinking Usage



Number of Distinct Users	176	230	280	315	352	528	734
Number of Sessions	959	1326	1948	1580	2143	3974	4432
Number of Hours	482.8	701.97	1172.32	1046.02	1293.87	2498.42	2775.58

Overview

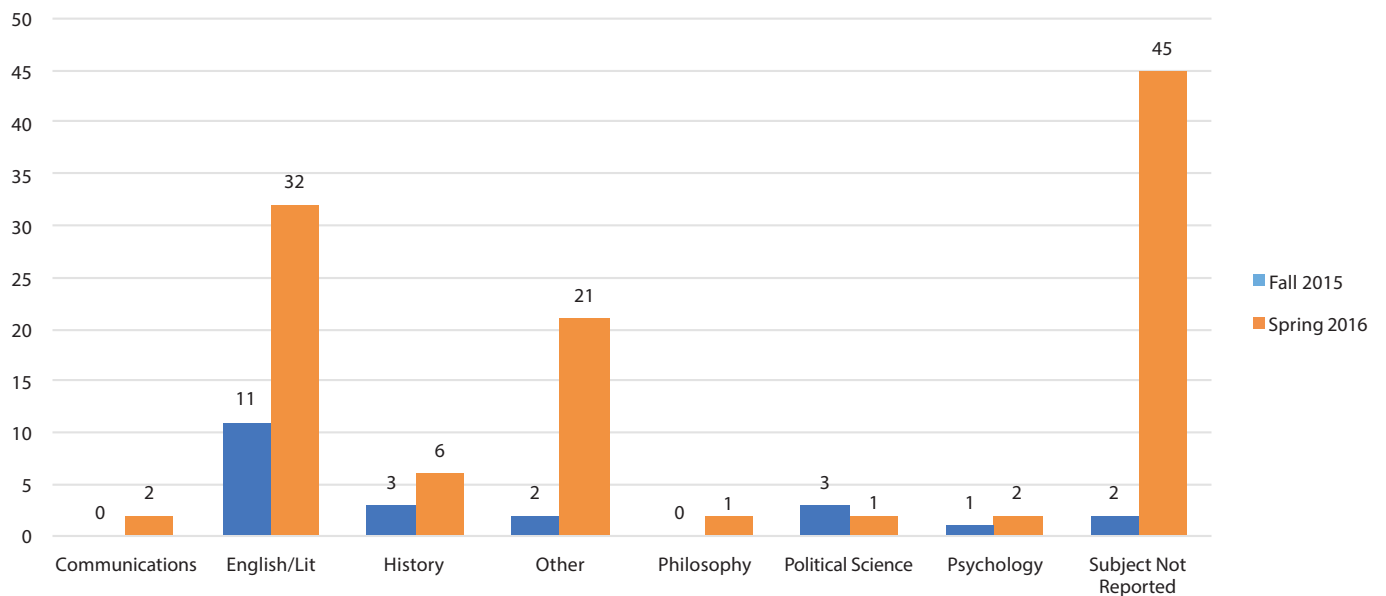
		New Registrations	Total Sessions	Time in Minutes	Time in Hours
Summer 2015	6/1/15 - 8/16/15	464	668	23205	386.75
Fall 2015	8/17/15 - 1/10/16	1204	2357	89149	1485.82
Spring 2016	1/11/16 - 5/27/16	1099	1407	54181	903.01
Total	6/1/15 - 5/27/16	2767	4432	166535	2775.58

Embedded Librarian Services

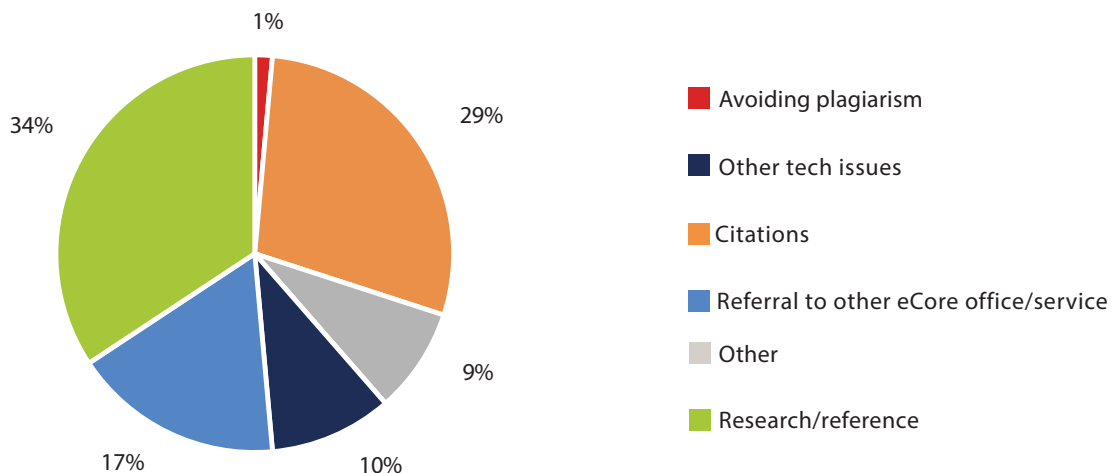
In Fall 2015, eCore began offering embedded librarian services in eCore courses to assist students with research, finding appropriate materials, formatting and citation style, finding study aids, and/or using Microsoft Office programs.

Students enrolled in the following subjects have access to the eCore Librarian Support and Services course within GoVIEW: COMM 1100, ENGL 1101, ENGL 1102, ENGL 2111, ENGL 2112, ENGL 2131, ENGL 2132, ETEC 1101, HIST 1111, HIST 2111, PHIL 2010, POLS 1101, PSYC 1101, SOCI 1101. Within the course, they have access to a variety of resources, including content modules, discussion boards, and direct access to the eCore Librarians.

Student Questions by Subject



Help Topics



FY 2016 Embedded Tutor Activities

The following table represents the embedded tutor activities for FY 2016. Embedded tutors were placed in all eCore math and science classes for all three semesters.

Summer 2015, Fall 2015, and Spring 2016: CHEM 1211K, CHEM 1212K, ENVS 2202, GEOL 1011K, MATH 1101, MATH 1111, MATH 1113, MATH 1401, MATH 1501, and PHYS 1211K.

Embedded tutors monitor the Tutor Talk discussion board topics, respond to questions, and make substantive posts on a weekly basis. The faculty member can also post on the Tutor Talk topic for student assistance. Embedded tutor postings can be useful for increasing student engagement inside the classroom.

Local embedded tutoring differs from Smarthinking Online Tutoring in these areas:

- 1) The embedded tutor is enrolled in the class and can respond to direct assignment questions.
- 2) In addition to the embedded tutoring responses, the professor can monitor the questions and respond, and other students can also monitor and respond.
- 3) The original question and responses are transparent and available to all students in the classroom.

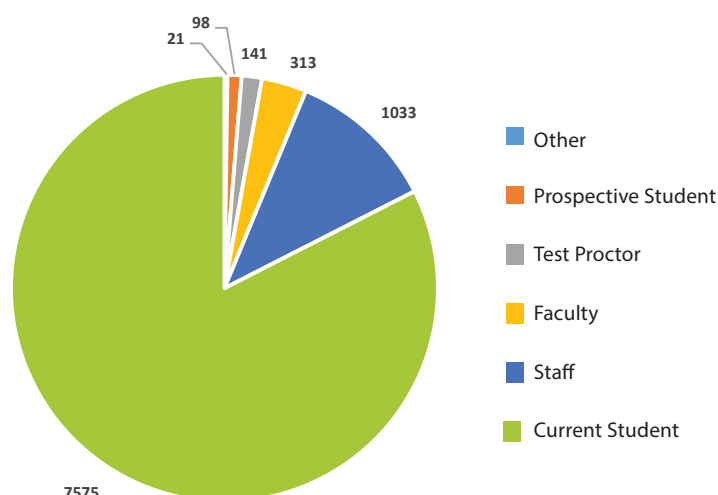
Because of the transparency that the discussion board location lends, posts can be viewed by all students in the classroom and all students have an opportunity to benefit from the embedded tutor responses.

Embedded Tutor Posting Activities	Summer 2015	Fall 2015	Spring 2016	Total FY 2016
Total number of eCore Sections	109	297	322	728
Number of STEM Sections	25	79	81	181
Embedded Tutor Posts only in the Tutor Talk Discussion Topics	141	471	437	1049
All Posts in Tutor Talk Discussion Topics	610	1821	1199	3630

eCampus Helpdesk

The eCampus Helpdesk supports eCore and eMajor prospective and current students, faculty, and staff. The Helpdesk is open during normal business hours and offers comprehensive support, including telephone, email, and instant message chat service. In FY2016, the call center answered over 9100 phones calls and approximately 450 chats.

Caller Type	Number of Calls	Percentage of Calls
Other	21	0.23%
Prospective Student	98	1.07%
Test Proctor	141	1.54%
Faculty	313	3.41%
Staff	1033	11.25%
Current Student	7575	82.51%
Total	9181	100.00%



FY 2016 Startup Outreach Activities

The following table represents the startup outreach activities for FY 2016. Students who have not logged into the course by Day 3 of class are contacted via phone and email. This activity is performed by the entire eCore team. The login deadline for classes is 12N on Day 5; therefore, students who have missed this deadline are in jeopardy of administrative withdrawal and are promptly contacted and notified that they have missed the login deadline and are provided an opportunity to drop by the midnight deadline. The Day 5 activity is performed by the Student Success Team (SST). This activity is also performed as part of the Short Session II startup days, in the middle of a long semester.

Startup Outreach Activity	Summer 2015	Fall 2015	Spring 2016	Total FY 2016
Total Enrollment for the Semester	3196	9142	10203	22541
Day 3: Students who have not logged in for Full, Short I, and Short II Sessions				
Percent Enrollment Not Logged In	15.05%	23.31%	21.24%	21.20%
Enrollment Not Logged In	481	2131	2167	4779
Unduplicated Students Not Logged In	400	1687	1769	3856
Day 5: Students who have not logged in for Full, Short I, and Short II Sessions				
Percent Enrollment Not Logged In	2.35%	4.04%	2.50%	3.10%
Enrollment Not Logged In	75*	369*	255*	699*
Unduplicated Students Not Logged In	64*	280*	213*	557*

* In FY2016, only students from affiliates that administratively withdraw for non-attendance were contacted on Day 5.

DID YOU KNOW?

The top inquiries that the Helpdesk received by telephone are:

Proctored Exams - 20.34%

Access/Login Information - 17.81%

Registration - 7.53%

FY 2016 Preemptive Outreach Activities

Beginning two weeks before classes start, eCore will begin distribution of the Welcome and Getting Started emails. Along with this activity, preemptive calling cycles begin as a secondary communication to a particular student base. Students who are in a high number of eCore classes are contacted before classes begin so that registration can be confirmed, student success tips can be provided, and any questions can be answered. The preemptive cycle may also include students who are pre-identified as at-risk by either the eCore affiliate or prior eCore participation. If time allows, new affiliate students with smaller enrollment are also included in the call cycle.

The purpose of the preemptive calling activities is to make a connection with a student before classes begin, in hopes of triggering early engagement that continues until the end of the semester. The Welcome and Getting Started email includes GoVIEW login instructions as well as other startup activities, and the preemptive calls attempt to reinforce the welcome message and encourage students to begin working on the GoVIEW platform and in the eCore Connection in preparation for Day 1 of classes.

The following table represents the preemptive outreach activities for FY 2016.

Preemptive Outreach Activity (Phone Calls)	Summer 2015	Fall 2015	Spring 2016	Total FY 2016
Total Enrollment for the Semester	3196	9142	10203	22541
Identified preemptive student enrollment	471	1464	1406	3341
Identified preemptive students	179	365	363	907

Saving Our Students (SOS)

FY 2016 In-Term Outreach Activities

Faculty used the SEADS system (Student Engagement and Advancement Data System) to report students in need of intervention. The Student Success Team contacts the student within 2-3 business days, often within one business day, by phone call and/or email. The loop is closed when faculty receive follow-up from the SST. Withdrawing students complete a request and survey form, and the Student Success Team contacts each withdrawing student within 48 business hours to help the student make an informed decision. Beginning in Spring 2015, eCore students can submit the withdrawal via an eCore student portal. This provides the student with an opportunity to cancel the withdrawal on their own, within the 48-business-hour window.

Another outbound activity is contacting students who are missing proctored exam scheduling and appointments. Please see the Testing Information section of this fact book for more information.

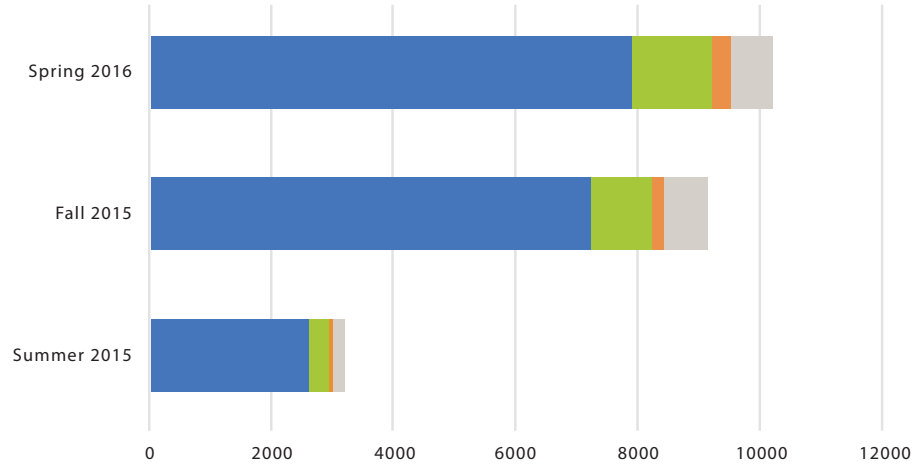
The following table represents the in-term outreach activities for FY 2016.

In-Term Outreach Activity (Phone Calls, Emails)	Summer 2015	Fall 2015	Spring 2016	Total FY 2016
Total Enrollment for the Semester	3196	9142	10203	22541
SEADS At-Risk Entries (* can be multiple entries per student-course, across the term)	679	2131	2761	5571
Withdrawal Requests	272	863	898	2033
Students with Missing Proctored Exam	N/A	N/A	395	395

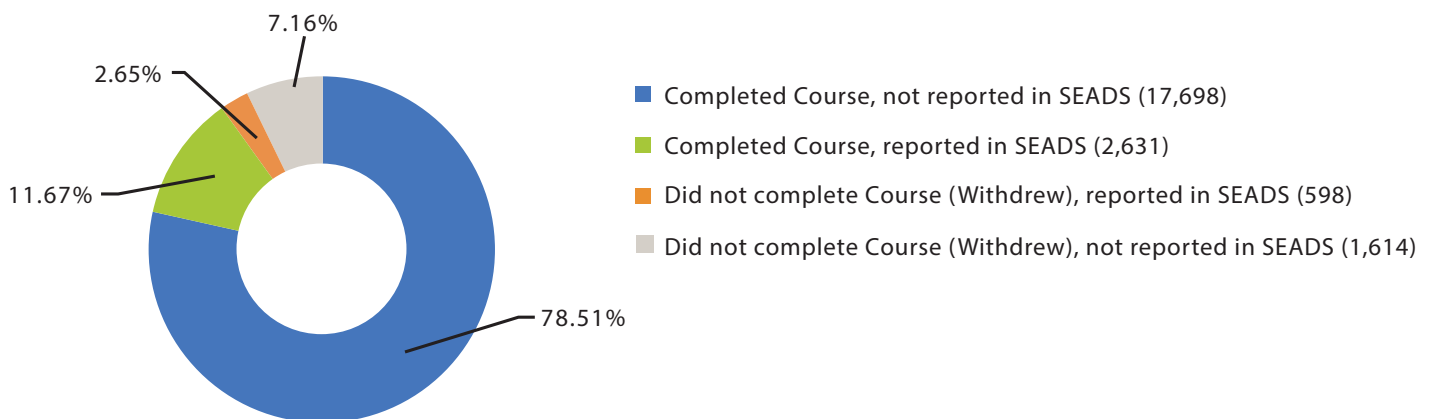
SEADS - FY 2016 Comparison of Early Alert Reporting to Course Completion

Spring 2016 had the largest percentage of enrollment reported in SEADS for outreach intervention (16.00%)

Summer 2015 had the lowest percentage of enrollment reported in SEADS for outreach intervention (12.23%)



	Summer 2015	Fall 2015	Spring 2016
Completed Course, not reported in SEADS (17,698)	2603	7215	7880
Completed Course, reported in SEADS (2,631)	317	996	1318
Did not complete Course (Withdrawn), reported in SEADS (598)	74	210	314
Did not Complete Course (Withdrawn), not reported in SEADS (1,614)	202	721	691



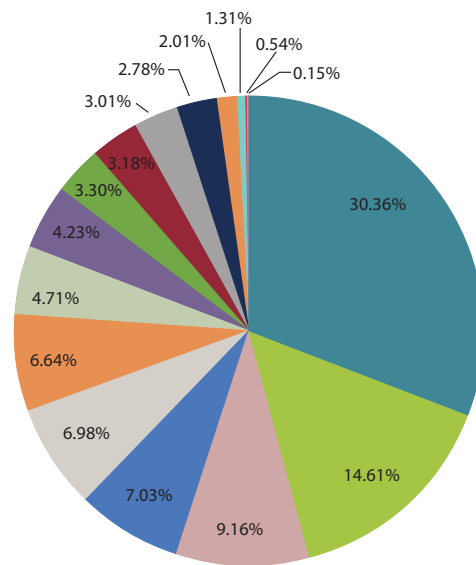
Student Withdrawal Survey

When a student wants to withdraw from an eCore class, a withdrawal survey request is submitted. In a 2-business day window, the student is contacted so that more information is provided for an informed decision. A student can cancel the request in this 2-day window. There may also be students who are administratively withdrawn and do not submit a withdrawal survey request, such as at the beginning of the term for non-attendance. Students are asked on the survey form about the reason for withdrawal, factors for withdrawal, and the eCore experience. The following represents the withdrawing data for FY 2016.

Withdrawal Reasons

Primary Reason- Personal Life-Related Issue: Time Impact (job, personal obligations) (30.36%)

Secondary Reason- Course-Related Issue: Prefer a Campus Face-to-Face Class (14.61%)



- Personal Life-Related Issue: Time Impact (job, personal obligations) [30.36%]
- Course-Related Issue: Prefer a campus face-to-face class [14.61%]
- Personal Life-Related Issue: Family Life Obligations [9.16%]
- Course-Related Issue: Time Management (difficulty staying on schedule) [7.03%]
- Personal Life-Related Issue: Illness [6.98%]
- Personal Life-Related Issue: Job Obligations [6.64%]
- Course-Related Issue: Reason Not Listed [4.71%]
- Course-Related Issue: Need more individual attention [4.23%]
- Personal Life-Related Issue: Reason Not Listed [3.30%]
- Course-Related Issue: Difficulty connecting to course [3.18%]
- Personal Life-Related Issue: Finances [3.01%]
- Course-Related Issue: Grade Issue [2.78%]
- Personal Life-Related Issue: Moving [2.01%]
- Course-Related Issue: Difficult to follow instructions [1.31%]
- Course-Related Issue: Academic Advising (Pre-Requisite issue) [0.54%]
- Course-Related Issue: Computer Skills [0.15%]

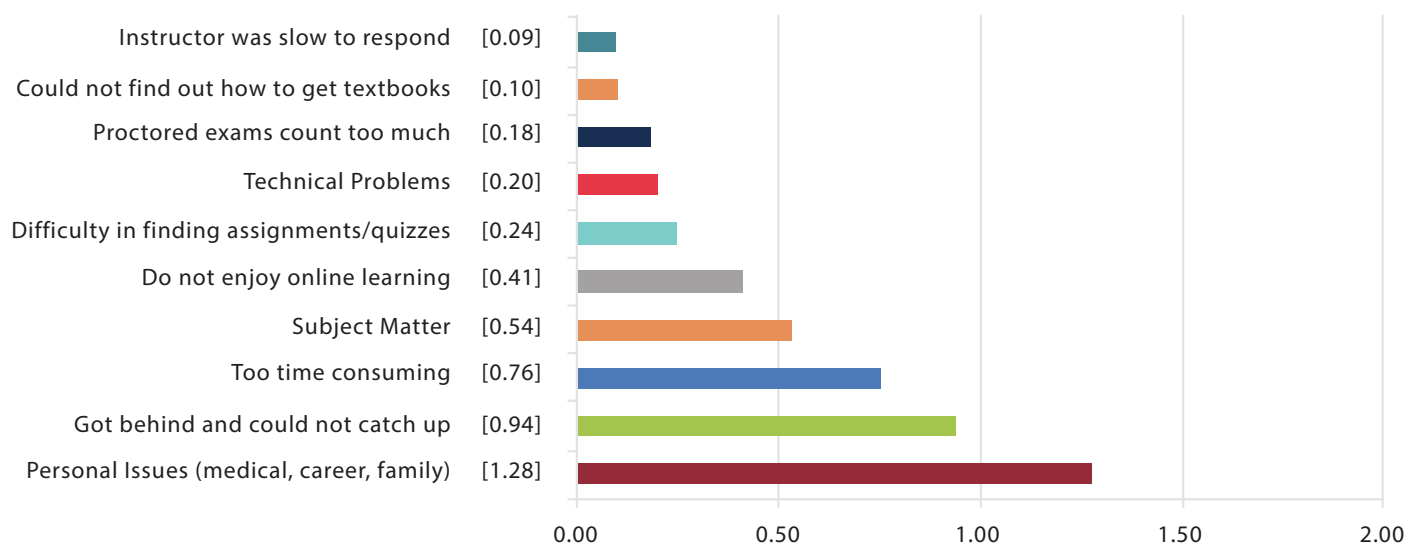
Withdrawal Factors

(0 = No Impact, 1 = Somewhat an Impact, and 2 = Significant Impact)

Primary factor: Personal issues (medical, career, family): (1.28)

Secondary factor: Got behind and could not catch up: (0.94)

Least factor: Instructor was slow to respond: (0.09)



DID YOU KNOW?

The eConnection is a startup tutorial class that is available to all students beginning 2 weeks before start of classes. Students have access to the eConnection throughout the semester.

Students who logged into the eConnection (Fall 2015)

% ABC - 4 pct. points

% Completion - 2 pct. points

Students who did **NOT** log into the eConnection (Fall 2015)

% ABC - 18 pct. points

% Completion - 8pct. points

Withdrawal Experiences

Four Point Scale: 1 - Strongly Disagree, 2 - Disagree, 3 - Agree, 4 - Strongly Agree

Respondents could choose Not Applicable and Don't Know, which were excluded from the scale calculations.

Most Strongly Agree experience: Information regarding due dates was easy to find (2.73)

Second-most Strongly Agree experience: My instructor responded to my inquiries in a timely manner (2.70)

Most Strongly Disagree experience: The proctored exams counted too much toward the total grade (1.46)

The experience with the most Don't Know or Not Applicable: The proctored exams counted too much toward the total grade (471) and Information regarding due dates was easy to find (471)

