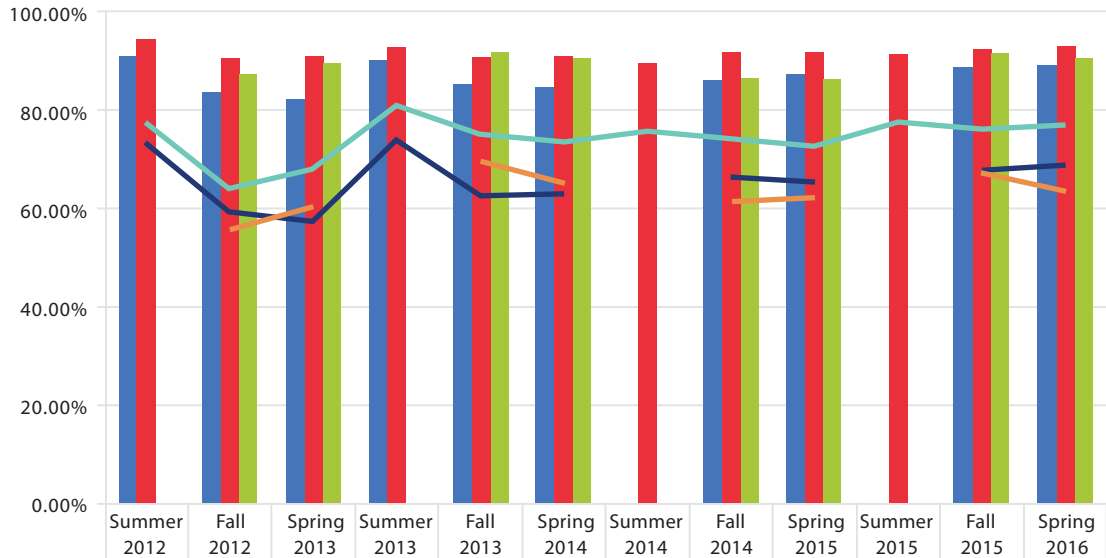
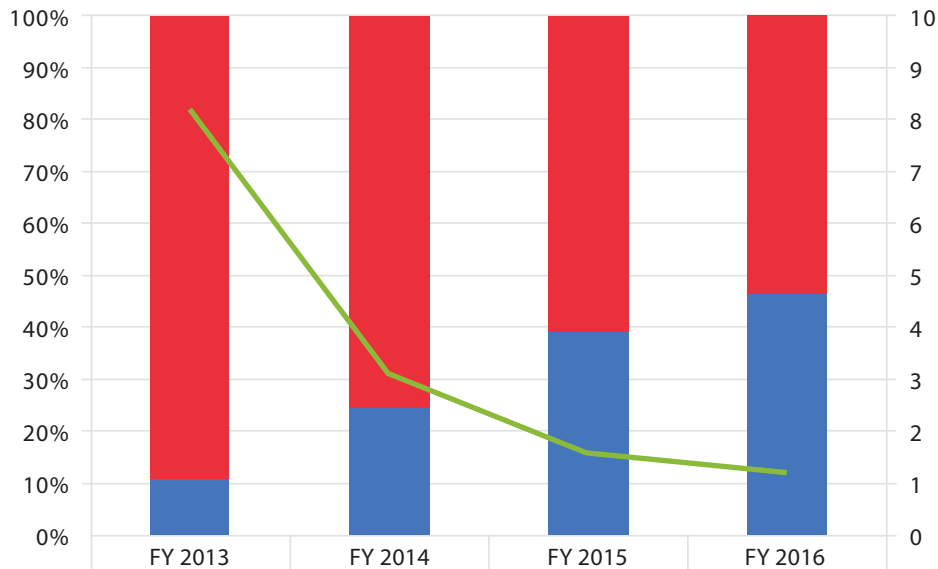


Course Completion and Successful Course Completion by Session Type across Term



	Summer 2012	Fall 2012	Spring 2013	Summer 2013	Fall 2013	Spring 2014	Summer 2014	Fall 2014	Spring 2015	Summer 2015	Fall 2015	Spring 2016
Course Completion Rate - Full	91.32%	83.53%	82.24%	90.14%	85.11%	84.65%		86.28%	87.41%		88.70%	89.18%
Course Completion Rate - Short I	94.44%	90.38%	90.97%	92.60%	90.87%	91.00%	89.65%	91.82%	91.83%	91.36%	92.37%	93.23%
Course Completion Rate - Short II		87.44%	89.47%		91.81%	90.69%		86.64%	86.25%		91.43%	90.48%
Successful ABC Rate - Full	73.24%	59.37%	57.50%	74.10%	62.45%	63.06%		66.43%	65.50%		67.71%	68.85%
Successful ABC Rate - Short I	77.78%	64.10%	68.06%	81.10%	75.34%	73.64%	75.92%	73.85%	72.96%	77.60%	76.42%	77.21%
Successful ABC Rate - Short II		55.56%	60.37%		69.57%	64.95%		61.35%	62.23%		67.16%	63.55%

Session Length & Enrollment



	FY 2013	FY 2014	FY 2015	FY 2016
Full	7394	7307	8661	12073
Short	902	2384	5528	10468
Ratio Full : Short	8.2	3.1	1.6	1.2