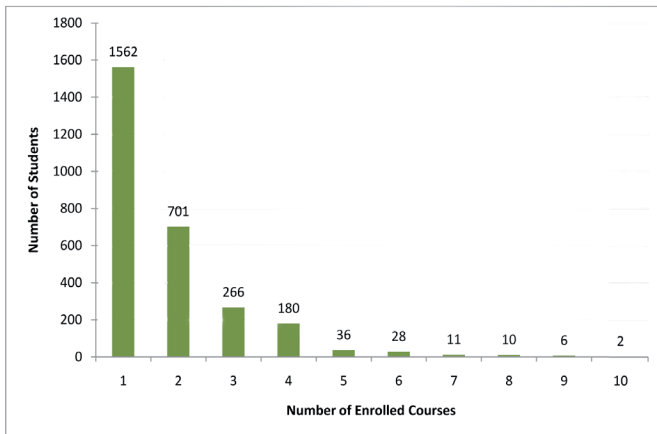
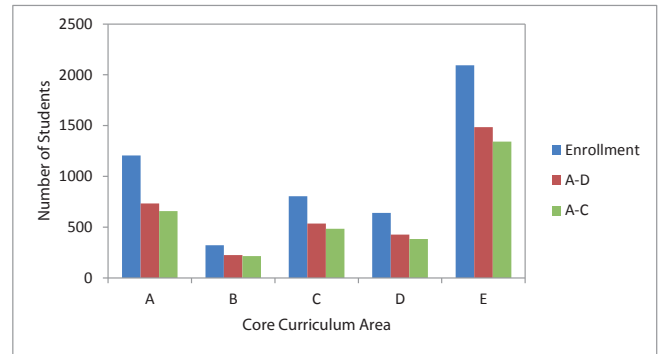


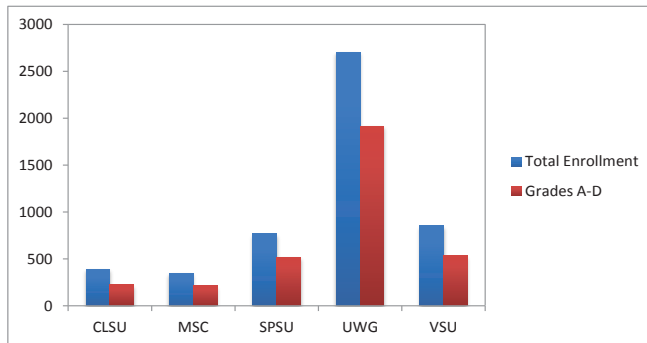
## Number of eCore Courses Taken by Students FY 2011



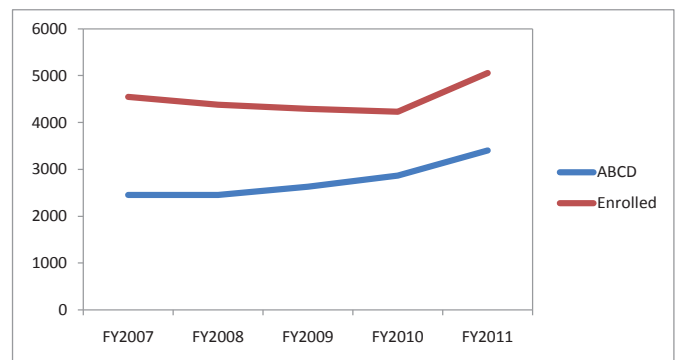
## Overall Enrollment & Success FY 2011



## Enrollment & Success by Affiliate Institution FY 2011



## Changes in Enrollment & Success Over Time FY 2007-2011



## Major Finding

- The eCore Enrollment and Success comparison has improved from 54% in FY2007 to over 67% in FY2010-2011.

|        | Enrolled | A-B-C-D | Enrollment Success |
|--------|----------|---------|--------------------|
| FY2007 | 4548     | 2456    | 54.00%             |
| FY2008 | 4379     | 2457    | 56.11%             |
| FY2009 | 4289     | 2633    | 61.39%             |
| FY2010 | 4233     | 2871    | 67.82%             |
| FY2011 | 5061     | 3404    | 67.26%             |