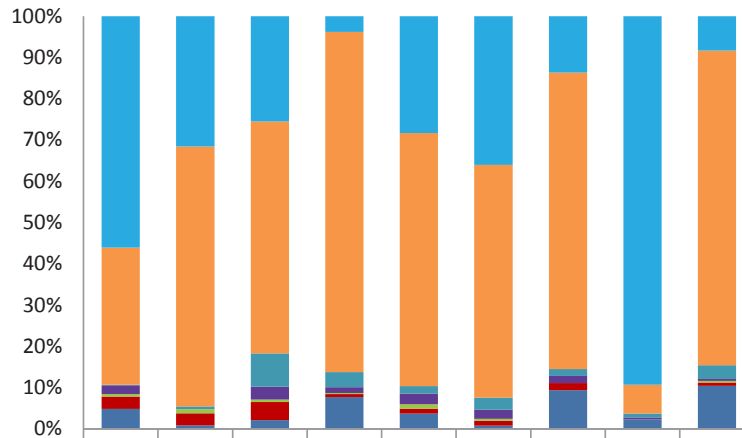


Race/Ethnicity of eCore Students

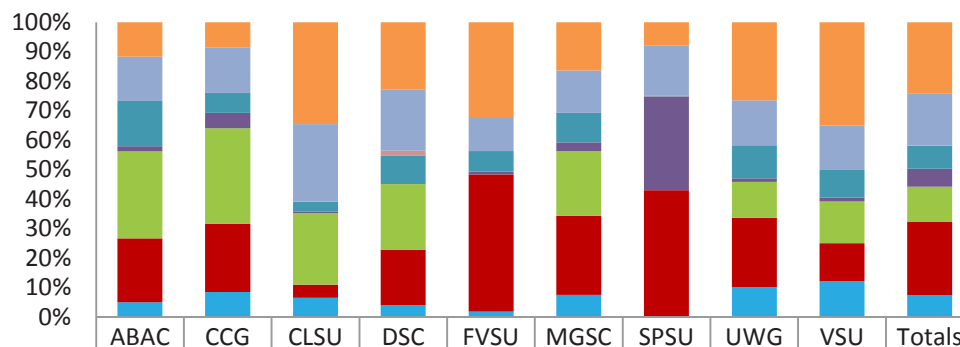
The following chart shows the race/ethnicity of eCore students for FY 2013. These data were provided by the participating affiliates.



	CLSU	MGSC	SPSU	DSC	UWG	VSU	CCGA	FVSU	ABAC
Black(Non-Hispanic)	510	151	219	16	490	233	16	192	20
White(Non-Hispanic)	302	301	481	342	1062	365	84	15	183
Hispanic	1	3	69	15	31	19	2	2	8
Multiracial/2 or More Races	19	0	27	6	45	14	2	1	1
American Indian/Alaskan Native	6	5	5	1	19	3	0	0	1
Asian or Native Hawaiian/ Pacific Islander	27	14	38	3	21	8	2	0	2
Unknown/Not Disclosed/ Not Identified	44	4	18	32	64	5	11	5	25

Major of eCore Students

The following chart shows the declared majors of eCore students for FY 2013. These data were provided by the participating affiliates.



	ABAC	CCG	CLSU	DSC	FVSU	MGSC	SPSU	UWG	VSU	Totals
Liberal Arts	28	10	314	95	69	78	68	458	226	1219
Business	36	18	237	86	25	69	146	264	96	890
Certificate	0	0	2	7	0	0	1	0	1	9
Education	37	8	31	40	15	48	1	195	62	391
Engineering	4	6	4	0	2	14	272	21	8	310
Nursing & Health Sciences	71	38	221	92	0	105	0	210	92	604
Sciences	52	27	40	78	100	128	369	408	83	1256
Undeclared	12	10	60	17	4	36	0	176	79	374