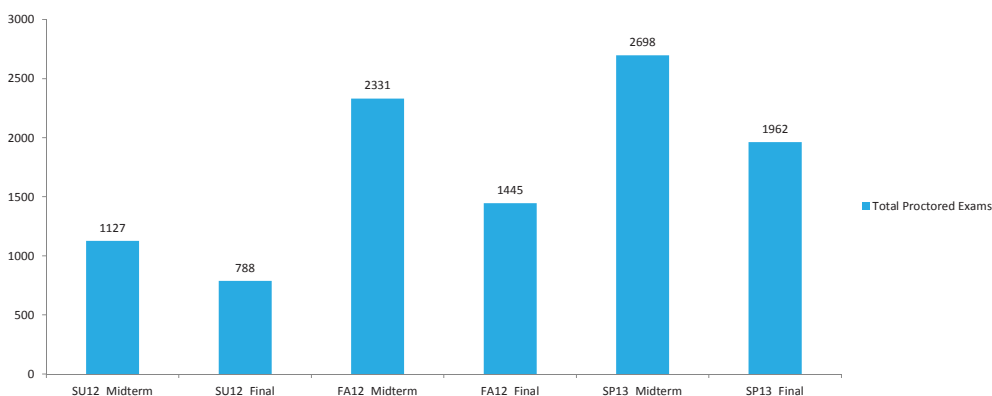
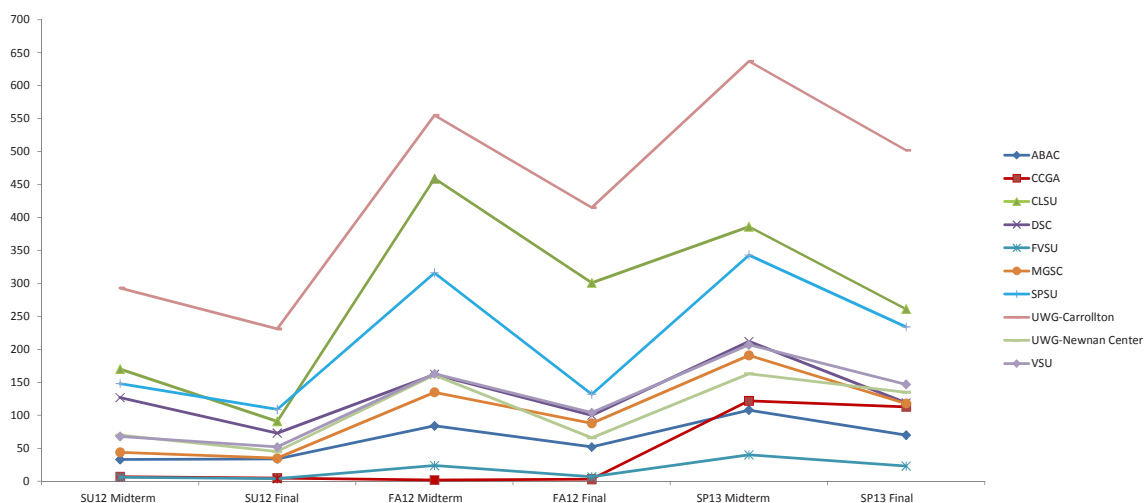


## Total Number of Proctored Tests FY 2013



## Affiliate Test Trend Analysis

These numbers were generated by the number of verified tests taken.



## Revenue Generated by Affiliate Testing Centers

These numbers were generated by multiplying the number of verified tests taken by the proctor fee per institution. eCore affiliate institutions retain all revenue generated through proctored exams at their institution.

Testing Site	Proctor Fee	SU12	FA12	SP13
ABAC	\$25	\$1,675	\$3,400	\$4,450
CCGA	\$20	\$240	\$100	\$4,700
CLSU	\$20	\$5,220	\$15,200	\$12,940
DSC	\$25	\$5,000	\$6,550	\$8,275
FVSU	\$25	\$250	\$775	\$1,575
MGSC	\$15	\$1,185	\$3,345	\$4,635
SPSU	\$25	\$6,425	\$11,200	\$14,425
UWG-Carrollton	\$10	\$5,240	\$9,700	\$11,390
UWG-Newnan Center	\$10	\$1,150	\$2,270	\$2,980
VSU	\$20	\$2,400	\$5,340	\$7,080
GA Non Affiliates	\$25	\$5,000	\$8,325	\$9,750
US Non Affiliates	\$25	\$1,625	\$2,450	\$3,075