

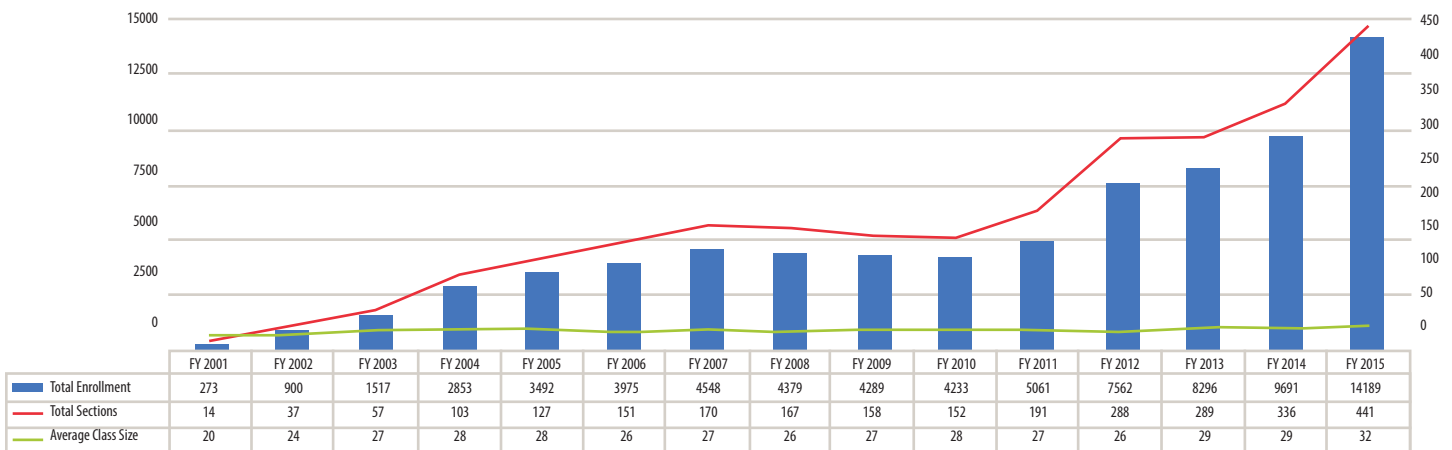
Academic Information

eCore’s model of incorporating best practices in all aspects of online course creation and implementation has been a driving force in the enrollment growth of eCore for several years.

Incorporating the pillars of quality courses, strong student support, and qualified faculty, eCore has been on an upward trajectory of growth. Students have found that not all online courses are created equally. They are becoming increasingly aware not only of price considerations but also of relevance of quality, transferability, and reputation in their decisions. eCore, working with USG institutions, is filling these needs for students.

Total Enrollment by Fiscal Year

The following chart shows the total enrollment and number of sections offered by eCore, FY 2001 - FY 2015.

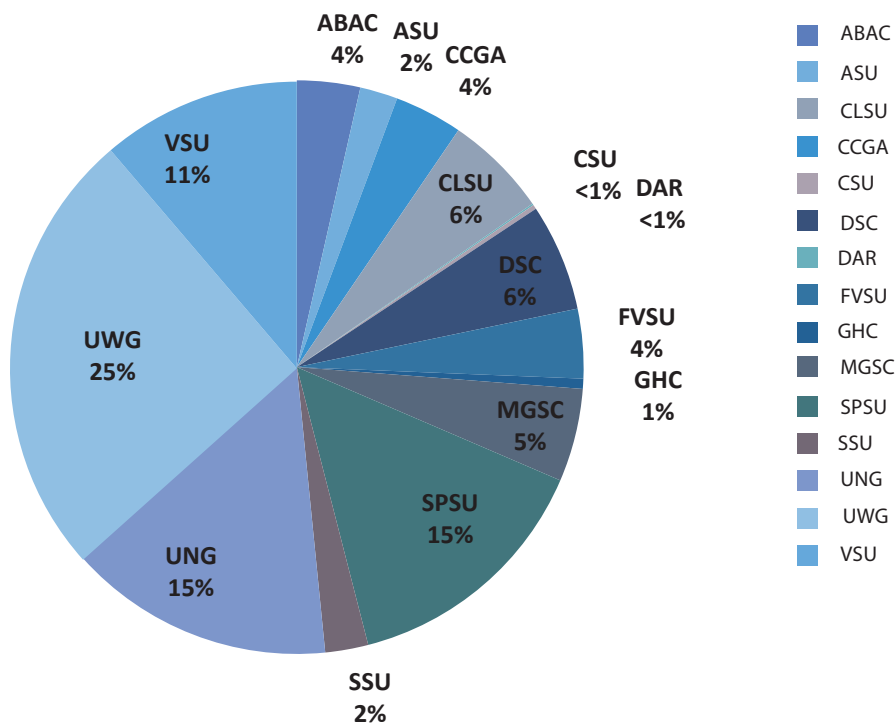


Enrollment by Affiliate FY 2007- 2015

The following chart represents the total enrollment in eCore courses by affiliate for FY 2007 - FY 2015.

Affiliate	FY 2007	FY 2008	FY 2009	FY 2010	FY 2011	FY 2012	FY 2013	FY 2014	FY 2015	Total all FY
ABAC	0	0	0	0	0	119	345	459	505	1428
ASU	0	0	0	0	0	0	0	0	302	302
CCGA	0	0	0	0	0	0	175	568	545	1288
CLSU	0	0	0	0	395	1442	1386	1288	826	5337
CSU	1216	942	496	0	0	0	0	0	13	2667
DAR	0	0	0	0	0	0	0	0	35	35
DSC	0	0	0	0	0	624	596	664	857	2741
FVSU	0	0	0	0	0	188	316	466	555	1525
GHC	364	418	364	0	0	0	0	0	81	1227
GSW	264	259	230	32	0	0	0	0	0	785
MGSC	0	0	0	0	349	512	681	620	745	2907
SPSU	420	485	565	683	766	1124	1180	1265	2062	8550
SSU	0	0	0	0	0	0	0	0	344	344
UNG	0	0	0	0	0	0	0	681	2123	2804
UWG	1955	1875	1976	2665	2700	2551	2576	2369	3601	22268
VSU	329	400	658	853	851	1002	1041	1311	1595	8040
Total	4548	4379	4289	4233	5061	7562	8296	9691	14189	62248

Total Enrollment FY 2015

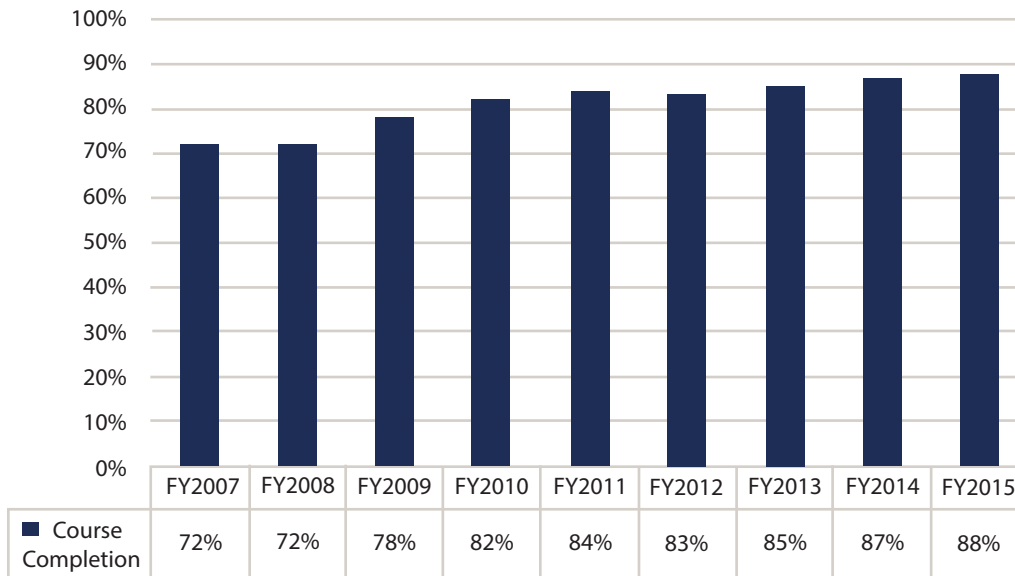


Enrollment by Course

Course Title	FY 2007	FY 2008	FY 2009	FY 2010	FY 2011	FY 2012	FY 2013	FY 2014	FY 2015
American Government <i>Top Enrollment</i>	482	456	386	289	381	549	594	670	993
American Literature I	NT	NT	NT	NT	NT	NT	NT	NT	207
American Literature II	146	89	128	85	121	195	211	221	315
Calculus I	51	55	63	67	53	111	143	157	346
Chemistry I	58	53	49	74	81	157	146	185	288
Chemistry II	34	30	33	61	45	76	90	70	128
College Algebra	233	206	220	227	282	403	444	560	715
Elect. Tech. in Ed. Environment	20	15	12	27	56	30	30	37	57
English Composition I	193	209	165	185	296	365	363	441	591
English Composition II <i>Top Enrollment</i>	275	245	283	303	336	608	664	791	1079
Environmental Science	71	78	92	86	112	152	234	318	565
Geosciences I	186	150	174	106	137	184	262	322	482
Human Communication	234	208	224	219	266	381	451	575	744
Intermediate Spanish I	36	50	49	114	121	153	157	172	228
Intermediate Spanish II	15	32	46	62	79	124	109	96	175
Math Modeling	82	78	78	64	84	164	186	206	291
Philosophy	199	219	226	226	234	298	354	509	636
Physics I	31	42	33	34	39	59	51	63	89
Physics II	4	5	NT	NT	NT	NT	NT	NT	NT
Pre-Calculus	167	129	137	168	204	334	365	432	661
Psychology	389	323	282	272	300	438	514	512	753
Sociology <i>Top Enrollment</i>	290	318	263	285	327	463	480	619	832
Statistics	146	134	131	135	173	273	297	396	595
U.S. History I <i>Top Enrollment</i>	450	462	498	445	510	659	681	786	1248
World History I <i>Top Enrollment</i>	471	517	488	506	575	820	874	821	1088
World Literature I <i>Top Enrollment</i>	285	276	229	193	249	566	596	732	935
World Literature II	NT	NT	NT	NT	NT	NT	NT	NT	148
Total Enrollment for All Courses	4548	4379	4289	4233	5061	7562	8296	9691	14189

*NT = Not Taught

Course Completion by Fiscal Year

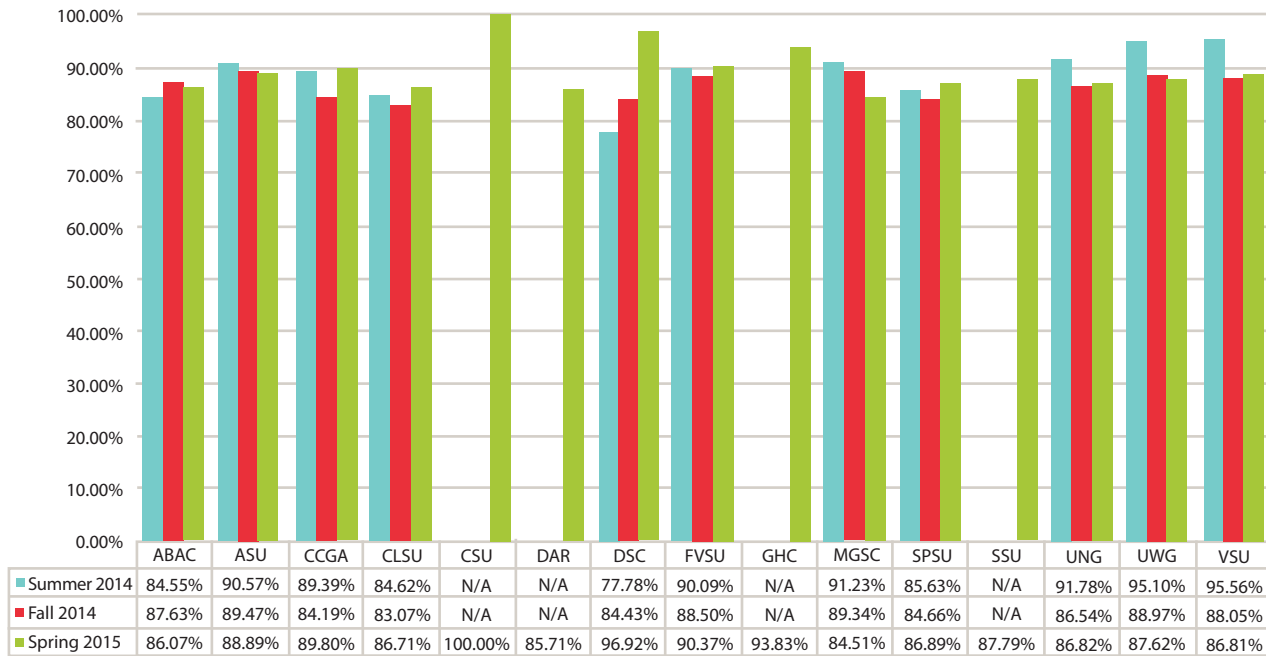


Course Completion by Course

Course Title	FY 2007	FY 2008	FY 2009	FY 2010	FY 2011	FY 2012	FY 2013	FY 2014	FY 2015
American Government	73%	74%	84%	90%	90%	88%	90%	91%	94%
American Literature I	NT	NT	NT	NT	NT	NT	NT	NT	88%
American Literature II	71%	82%	84%	74%	76%	87%	85%	88%	88%
Calculus I	63%	65%	75%	75%	72%	71%	71%	71%	72%
Chemistry I	59%	60%	65%	62%	64%	64%	66%	76%	80%
Chemistry II	62%	47%	73%	82%	78%	86%	80%	83%	82%
College Algebra	71%	73%	81%	84%	83%	85%	85%	84%	85%
Elect. Tech. in Ed. Environment	70%	80%	83%	85%	88%	80%	87%	89%	93%
English Composition I	75%	78%	87%	86%	87%	90%	89%	89%	93%
English Composition II	74%	65%	76%	79%	83%	82%	87%	91%	91%
Environmental Science	90%	92%	87%	87%	92%	89%	89%	97%	92%
Geosciences I	70%	73%	76%	75%	84%	80%	77%	83%	80%
Human Communication	68%	74%	86%	85%	89%	85%	88%	88%	92%
Intermediate wSpanish I	69%	60%	61%	68%	77%	72%	81%	81%	84%
Intermediate Spanish II	93%	75%	83%	77%	89%	90%	96%	90%	89%
Math Modeling	46%	54%	63%	69%	62%	78%	79%	77%	84%
Philosophy	62%	63%	77%	81%	83%	77%	82%	86%	83%
Physics I	45%	50%	52%	59%	69%	68%	75%	86%	76%
Physics II	100%	40%	NT	NT	NT	NT	NT	NT	NT
Pre-Calculus	70%	74%	74%	76%	78%	78%	83%	86%	85%
Psychology	74%	71%	74%	86%	88%	85%	91%	91%	92%
Sociology	77%	79%	85%	89%	89%	88%	91%	92%	92%
Statistics	78%	73%	76%	82%	81%	74%	81%	86%	83%
U.S. History I	79%	71%	79%	83%	85%	85%	88%	88%	89%
World History I	72%	77%	77%	83%	87%	85%	84%	89%	89%
World Literature I	66%	70%	70%	84%	79%	78%	79%	81%	83%
World Literature II	NT	NT	NT	NT	NT	NT	NT	NT	91%
Total Completion All Courses	72%	72%	78%	82%	84%	83%	85%	87%	88%

*NT = Not Taught

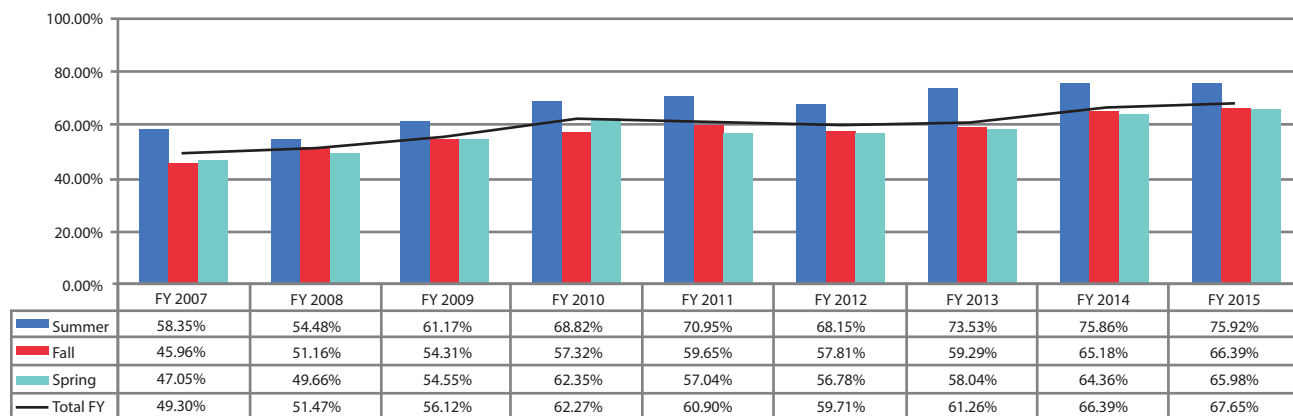
Course Completion by Affiliate



Grade Comparisons

The following sub-sections represent the eCore grade distribution findings for FY 2015. The first sub-section chart is a summary of eCore Percent Successful Grades (Grade A-B-C) by Fiscal Year since FY 2007. There is also a sub-section identifying the Short Session course rates for FY 2013-2015. eCore Short Session courses began in FY2013. The third sub-section reports eCore Grades by Course and Affiliate for FY 2015 and provides a meta-assessment to comparative affiliate grade distribution data for the same semesters. The affiliate data are representative of face-to-face, partial and total distance delivery, and other special course options at that campus such as honors or learning cohorts.

eCore Percent Successful Completion (A-B-C) FY 2007 – FY 2015 (Summer 2006 – Spring 2015)



The Case for Short Sessions

eCore began offering short session (8-week) versions of courses in Summer 2012 (FY 2013) and has steadily increased the number of course sections offered in the 8-week format beginning with 3 sections in Summer 2012, increasing to 39 sections (including Spanish and Calculus I) in Spring 2014, and almost doubling in Spring 2015 to 71 short session course sections offered.

eCore delivered 114 short session course sections in FY2015. All courses with the exception of the 4-hour lab sciences are now offered in both 8-week and 16-week delivery.

In FY2015, the Summer 2014 became all 8-week delivery. In addition to reducing confusion in summer registration for either 8-week or 10-week version of the courses, the summer switch also created an ancillary improvement in instructional design and faculty support, in that eCore courses need to be delivered only in 8-week and 16-week versions.

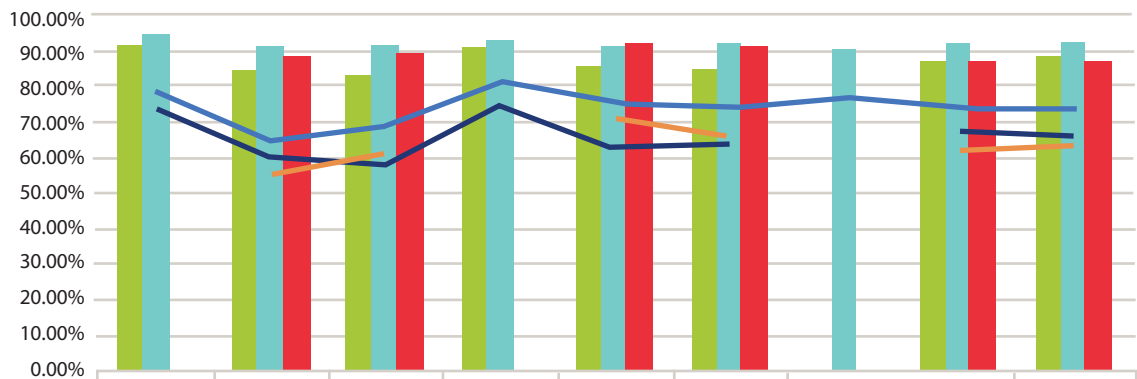
Short Sessions offer a flexible alternative for the student who may be impeded by a full 16-week time commitment. This can often translate

to improved success because the student has a shorter time commitment, may be registered in fewer hours during the short session, probably has a higher concentration of study time, and may have an academic incentive to complete quickly, such as meeting up with a cohort or graduating on time.

Short Session I course students will typically outperform Full and Short Session II performance.

For FY 2015, the highest successful course completion occurred in Summer 2014 Short I, at 75.82%. The second highest successful course completion occurred in Fall 2014 Short I, at 73.75%.

eCore Course Completion and Successful Course Completion by Session Type across Term

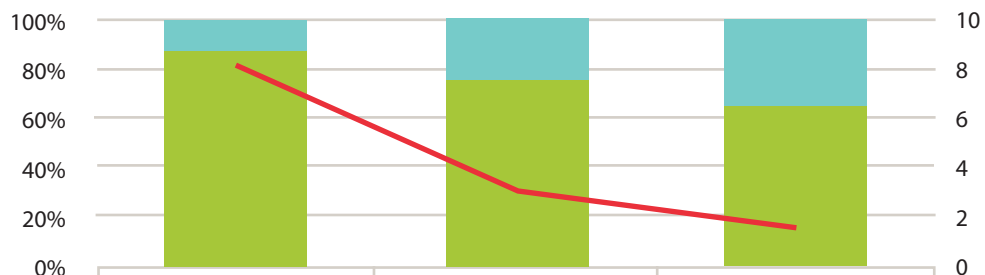


	Summer 2013	Fall 2012	Spring 2013	Summer 2013	Fall 2013	Spring 2014	Summer 2014	Fall 2014	Spring 2015
Course Completion Rate - Full	91.32%	83.53%	82.24%	90.14%	85.11%	84.65%	N/A	86.28%	87.41%
Course Completion Rate - Short I	94.44%	90.38%	90.97%	92.60%	90.87%	91.00%	89.65%	91.82%	91.83%
Course Completion Rate - Short II	N/A	88.44%	89.47%	N/A	91.81%	90.69%	N/A	86.64%	86.25%
Successful ABC Rate - Full	73.24%	59.37%	57.50%	74.10%	62.45%	63.06%	N/A	66.43%	65.50%
Successful ABC - Short I	77.78%	64.10%	68.06%	81.10%	75.34%	73.64%	75.92%	73.85%	72.96%
Successful ABC Rate - Short II	N/A	55.56%	60.37%	N/A	69.57%	64.95%	N/A	61.35%	62.23%

Session Type Comparisons

Each year, the enrollment ratio in full-to-short session sections is tracked, starting with a ratio of 8.2 in FY 2013. By FY 2015, the ratio of full-to-short session enrollment dropped significantly to 1.6. As this ratio approaches 1:1, meaning that the number of full session course sections is equal to the number of short session course sections, the enrollment will become equivalent in a FY between full session and short session deliveries.

eCore Enrollment by Session Type



	FY2013	FY2014	FY2015
Short	902	2384	5528
Full	7394	7307	8661
Ratio Full: Short	8.2	3.1	1.6

eCore Course

Equivalent Seated Campus Course

Affiliate	eCore Course	HCT	Percent Successful Course Completion (Grades A-B-C)	Percent Unsuccessful Course Completion (Grades D-F-W-WM-WF)	Percent Incompletion (Grades I-NR)	Percent Course Completion (No Withdrawals)	Equivalent Course	HCT	Percent Successful Course Completion (Grades A-B-C)	Percent Unsuccessful Course Completion (Grades D-F-W-WM-WF)	Percent Incompletion (Grades I-NR)	Percent Course Completion (No Withdrawals)
	CHEM 1211K	288	63.54%	35.76%	0.69%	79.51%						
ABAC	CHEM 1211K	8	75.00%	25.00%	0.00%	87.50%	CHEM 1211	312	69.23%	30.45%	0.32%	91.03%
ABAC	CHEM 1211K						CHEM 1211L	145	78.62%	21.38%	0.00%	93.79%
ASU	CHEM 1211K	Masked					CHEM 1211	182	62.64%	34.62%	2.75%	93.96%
ASU	CHEM 1211K	Masked					CHEM 1211L	177	75.71%	23.16%	1.13%	92.66%
CCGA	CHEM 1211K	12	50.00%	50.00%	0.00%	75.00%	CHEM 1211K	257	56.03%	43.97%	0.00%	88.33%
CLSU	CHEM 1211K	Masked					CHEM 1211	246	55.69%	43.90%	0.41%	89.84%
CLSU	CHEM 1211K	Masked					CHEM 1211L	200	67.50%	32.00%	0.50%	86.00%
DSC	CHEM 1211K	16	68.75%	31.25%	0.00%	87.50%	CHEM 1211K	380	76.58%	22.63%	0.79%	88.42%
FVSU	CHEM 1211K	Masked					CHEM 1211K	155	47.10%	52.90%	0.00%	83.87%
MGSC	CHEM 1211K	14	57.14%	42.86%	0.00%	85.71%	CHEM 1211K	279	74.91%	25.09%	0.00%	88.53%
SPSU	CHEM 1211K	103	66.99%	32.04%	0.97%	78.64%	CHEM 1211	704	64.49%	35.37%	0.14%	93.61%
SPSU	CHEM 1211K						CHEM 1211L	711	78.48%	21.52%	0.00%	93.67%
SSU	CHEM 1211K	Masked					CHEM 1211	207	72.95%	27.05%	0.00%	95.17%
SSU	CHEM 1211K	Masked					CHEM 1211L	169	71.01%	28.99%	0.00%	93.49%
UNG	CHEM 1211K	55	61.82%	36.36%	1.82%	74.55%	CHEM 1211	1110	65.95%	33.87%	0.18%	82.43%
UNG	CHEM 1211K						CHEM 1211L	1001	76.22%	23.68%	0.10%	82.12%
UWG	CHEM 1211K	44	61.36%	38.64%	0.00%	81.82%	CHEM 1211K	1171	72.93%	27.07%	0.00%	93.25%
VSU	CHEM 1211K	18	72.22%	27.78%	0.00%	83.33%	CHEM 1211	383	66.32%	33.68%	0.00%	89.30%
	CHEM 1212K	128	60.94%	38.28%	0.78%	82.03%						
ABAC	CHEM 1212K	Masked					CHEM 1212	131	76.34%	23.66%	0.00%	92.37%
ABAC	CHEM 1212K	Masked					CHEM 1212L	126	88.89%	11.11%	0.00%	92.06%
ASU	CHEM 1212K	Masked					CHEM 1212	141	82.98%	17.02%	0.00%	97.16%
ASU	CHEM 1212K	Masked					CHEM 1212L	136	89.71%	10.29%	0.00%	97.79%
CCGA	CHEM 1212K	Masked					CHEM 1212K	151	62.25%	37.75%	0.00%	80.13%
CLSU	CHEM 1212K	8	87.50%	12.50%	0.00%	87.50%	CHEM 1212	165	53.33%	46.67%	0.00%	88.48%
CLSU	CHEM 1212K						CHEM 1212L	126	76.19%	23.81%	0.00%	86.51%
DAR	CHEM 1212K	Masked					CHEM 1212K	98	73.47%	26.53%	0.00%	89.80%
DSC	CHEM 1212K	8	50.00%	50.00%	0.00%	100.00%	CHEM 1212K	220	84.09%	15.91%	0.00%	94.09%
FVSU	CHEM 1212K	Masked					CHEM 1212K	114	58.77%	41.23%	0.00%	94.74%
MGSC	CHEM 1212K	Masked					CHEM 1212K	139	85.61%	14.39%	0.00%	97.84%
SPSU	CHEM 1212K	24	54.17%	45.83%	0.00%	83.33%	CHEM 1212	178	77.53%	22.47%	0.00%	93.82%
SPSU	CHEM 1212K						CHEM 1212L	168	85.71%	14.29%	0.00%	93.45%
SSU	CHEM 1212K	Masked					CHEM 1212	112	60.71%	39.29%	0.00%	87.50%
SSU	CHEM 1212K	Masked					CHEM 1212L	98	67.35%	32.65%	0.00%	87.76%
UNG	CHEM 1212K	34	79.41%	20.59%	0.00%	91.18%	CHEM 1212	648	74.85%	25.15%	0.00%	88.43%
UNG	CHEM 1212K						CHEM 1212L	587	85.52%	14.48%	0.00%	88.25%

Legend:

- Masked Identified data not represented because the eCore or Campus course enrollment was for seven or fewer students
- Not Reported Identifies an eCore course that may not have a comparative campus course offered by the affiliate

eCore Course

Equivalent Seated Campus Course

Affiliate	eCore Course	HCT	Percent Successful Course Completion (Grades A-B-C)	Percent Unsuccessful Course Completion (Grades D-F-W-WM-WF)	Percent Incompletion (Grades I-NR)	Percent Course Completion (No Withdrawals)	Equivalent Course	HCT	Percent Successful Course Completion (Grades A-B-C)	Percent Unsuccessful Course Completion (Grades D-F-W-WM-WF)	Percent Incompletion (Grades I-NR)	Percent Course Completion (No Withdrawals)
UWG	CHEM 1212K	31	48.39%	51.61%	0.00%	70.97%	CHEM 1212K	730	74.25%	24.93%	0.82%	92.47%
VSU	CHEM 1212K	8	50.00%	50.00%	0.00%	50.00%	CHEM 1212	170	60.00%	40.00%	0.00%	85.29%
	COMM 1100	744	72.18%	27.69%	0.13%	92.47%						
ABAC	COMM 1100	28	64.29%	35.71%	0.00%	92.86%	COMM 1100	777	81.85%	18.15%	0.00%	96.78%
ASU	COMM 1100	18	72.22%	27.78%	0.00%	100.00%	COMM 1100	509	87.03%	12.38%	0.59%	98.43%
CCGA	COMM 1100	23	65.22%	34.78%	0.00%	100.00%	COMM 1100	Not Reported				
CLSU	COMM 1100	65	81.54%	18.46%	0.00%	92.31%	COMM 1100	Not Reported				
DSC	COMM 1100	30	73.33%	26.67%	0.00%	96.67%	COMM 1100	25	68.00%	32.00%	0.00%	88.00%
FVSU	COMM 1100	33	78.79%	18.18%	3.03%	93.94%	COMM 1110	390	90.00%	10.00%	0.00%	97.44%
GHC	COMM 1100	Masked					COMM 1100	753	78.22%	21.78%	0.00%	92.96%
MGSC	COMM 1100	22	68.18%	31.82%	0.00%	95.45%	COMM 1110	701	82.17%	17.55%	0.29%	93.01%
SPSU	COMM 1100	20	50.00%	50.00%	0.00%	80.00%	COMM 1100	Not Reported				
SSU	COMM 1100	Masked					COMM 1100	Not Reported				
UNG	COMM 1100	62	75.81%	24.19%	0.00%	93.55%	COMM 1100	334	83.23%	16.77%	0.00%	89.52%
UWG	COMM 1100	352	72.73%	27.27%	0.00%	91.48%	COMM 1110	824	85.92%	13.71%	0.36%	99.64%
VSU	COMM 1100	84	71.43%	28.57%	0.00%	94.05%	COMM 1100	601	89.68%	10.32%	0.00%	96.84%
	ENGL 1101	591	66.33%	33.67%	0.00%	93.06%						
ABAC	ENGL 1101	27	51.85%	48.15%	0.00%	85.19%	ENGL 1101	1148	73.78%	25.96%	0.26%	94.95%
ASU	ENGL 1101	Masked					ENGL 1101E	99	67.68%	32.32%	0.00%	95.96%
ASU	ENGL 1101	Masked					ENGL 1101	523	73.23%	26.39%	0.38%	99.24%
CCGA	ENGL 1101	33	66.67%	33.33%	0.00%	93.94%	ENGL 1101	921	78.94%	20.96%	0.11%	95.87%
CLSU	ENGL 1101	23	73.91%	26.09%	0.00%	100.00%	ENGL 1101	1135	83.08%	16.92%	0.00%	94.89%
DSC	ENGL 1101	43	58.14%	41.86%	0.00%	83.72%	ENGL 1101	1125	78.76%	21.07%	0.18%	95.11%
FVSU	ENGL 1101	22	68.18%	31.82%	0.00%	100.00%	ENGL 1101	396	63.89%	36.11%	0.00%	91.92%
GHC	ENGL 1101	16	87.50%	12.50%	0.00%	100.00%	ENGL 1101	727	66.30%	33.70%	0.00%	87.76%
MGSC	ENGL 1101	37	59.46%	40.54%	0.00%	100.00%	ENGL 1101	2039	75.82%	24.08%	0.10%	95.29%
SPSU	ENGL 1101	49	55.10%	44.90%	0.00%	81.63%	ENGL 1101	862	84.69%	15.31%	0.00%	95.94%
SSU	ENGL 1101	14	42.86%	57.14%	0.00%	92.86%	ENGL 1101	546	49.08%	49.45%	1.47%	93.04%
UNG	ENGL 1101	78	75.64%	24.36%	0.00%	96.15%	ENGL 1101	3798	80.86%	19.14%	0.00%	93.13%
UWG	ENGL 1101	194	70.10%	29.90%	0.00%	95.36%	ENGL 1101	2573	72.44%	25.61%	1.94%	95.18%
VSU	ENGL 1101	54	62.96%	37.04%	0.00%	88.89%	ENGL 1101	1613	82.70%	17.23%	0.06%	96.47%
	ENGL 1102	1079	71.36%	28.45%	0.19%	91.20%						
ABAC	ENGL 1102	63	69.84%	30.16%	0.00%	84.13%	ENGL 1102	981	83.59%	16.11%	0.31%	96.23%
ASU	ENGL 1102	22	36.36%	63.64%	0.00%	95.45%	ENGL 1102	624	70.99%	29.01%	0.00%	96.96%
CCGA	ENGL 1102	22	68.18%	31.82%	0.00%	90.91%	ENGL 1102	812	77.83%	22.04%	0.12%	94.46%
CLSU	ENGL 1102	46	73.91%	26.09%	0.00%	89.13%	ENGL 1102	1145	82.45%	17.55%	0.00%	93.36%
DAR	ENGL 1102	Masked					ENGL 1102	897	65.77%	34.00%	0.22%	89.30%

Legend:

- Masked Identified data not represented because the eCore or Campus course enrollment was for seven or fewer students
- Not Reported Identifies an eCore course that may not have a comparative campus course offered by the affiliate

eCore Course

Equivalent Seated Campus Course

Affiliate	eCore Course	HCT	Percent Successful Course Completion (Grades A-B-C)	Percent Unsuccessful Course Completion (Grades D-F-W-WM-WF)	Percent Incompletion (Grades I-NR)	Percent Course Completion (No Withdrawals)	Equivalent Course	HCT	Percent Successful Course Completion (Grades A-B-C)	Percent Unsuccessful Course Completion (Grades D-F-W-WM-WF)	Percent Incompletion (Grades I-NR)	Percent Course Completion (No Withdrawals)
DSC	ENGL 1102	79	75.95%	24.05%	0.00%	89.87%	ENGL 1102	1033	80.64%	18.68%	0.68%	92.55%
FVSU	ENGL 1102	33	66.67%	33.33%	0.00%	100.00%	ENGL 1102	460	77.39%	22.61%	0.00%	97.17%
GHC	ENGL 1102	8	75.00%	25.00%	0.00%	100.00%	ENGL 1102	948	74.68%	25.00%	0.32%	88.82%
MGSC	ENGL 1102	28	60.71%	39.29%	0.00%	82.14%	ENGL 1102	2010	76.22%	23.53%	0.25%	92.29%
SPSU	ENGL 1102	117	66.67%	32.48%	0.85%	92.31%	ENGL 1102	919	81.39%	18.17%	0.44%	94.02%
SSU	ENGL 1102	11	45.45%	54.55%	0.00%	100.00%	ENGL 1102	972	69.24%	30.66%	0.10%	96.09%
UNG	ENGL 1102	110	80.00%	20.00%	0.00%	94.55%	ENGL 1102	3648	81.39%	18.48%	0.14%	92.16%
UWG	ENGL 1102	441	73.02%	26.76%	0.23%	90.93%	ENGL 1102	1966	84.44%	15.31%	0.25%	95.17%
VSU	ENGL 1102	98	72.45%	27.55%	0.00%	91.84%	ENGL 1102	1493	80.11%	19.69%	0.20%	94.71%
	ENGL 2111	935	66.52%	33.26%	0.21%	82.89%						
ABAC	ENGL 2111	33	72.73%	27.27%	0.00%	87.88%	ENGL 2114	135	79.26%	20.74%	0.00%	92.59%
ASU	ENGL 2111	46	60.87%	39.13%	0.00%	91.30%	ENGL 2111	649	79.66%	18.95%	1.39%	96.61%
CCGA	ENGL 2111	16	68.75%	31.25%	0.00%	81.25%	ENGL 2111	299	69.90%	30.10%	0.00%	91.97%
CLSU	ENGL 2111	54	57.41%	40.74%	1.85%	74.07%	ENGL 2111	97	79.38%	20.62%	0.00%	88.66%
DAR	ENGL 2111	Masked					ENGL 2111	89	70.79%	28.09%	1.12%	86.52%
DSC	ENGL 2111	73	64.38%	35.62%	0.00%	78.08%	ENGL 2111	134	88.81%	11.19%	0.00%	94.78%
FVSU	ENGL 2111	47	57.45%	42.55%	0.00%	82.98%	ENGL 2111	399	82.21%	17.79%	0.00%	97.99%
MGSC	ENGL 2111	85	63.53%	36.47%	0.00%	81.18%	ENGL 2111	617	76.50%	23.34%	0.16%	90.60%
SPSU	ENGL 2111	193	69.43%	30.57%	0.00%	83.42%	ENGL 2111	96	85.42%	14.58%	0.00%	97.92%
SSU	ENGL 2111	9	55.56%	44.44%	0.00%	77.78%	ENGL 2110	90	71.11%	28.89%	0.00%	94.44%
UNG	ENGL 2111	189	67.72%	32.28%	0.00%	81.48%	ENGL 2111	716	85.20%	14.80%	0.00%	92.74%
UWG	ENGL 2111	47	74.47%	25.53%	0.00%	91.49%	ENGL 2110	111	82.88%	16.22%	0.90%	99.10%
VSU	ENGL 2111	138	68.12%	31.16%	0.72%	84.06%	ENGL 2111	398	80.15%	19.85%	0.00%	90.20%
	ENGL 2112	148	70.95%	26.35%	2.70%	91.22%						
ABAC	ENGL 2112	9	66.67%	33.33%	0.00%	66.67%	ENGL 2115	97	90.72%	9.28%	0.00%	100.00%
ASU	ENGL 2112	8	62.50%	37.50%	0.00%	100.00%	ENGL 2112	43	83.72%	16.28%	0.00%	100.00%
CCGA	ENGL 2112	14	57.14%	42.86%	0.00%	85.71%	ENGL 2112	334	79.94%	20.06%	0.00%	93.11%
CLSU	ENGL 2112	Masked					ENGL 2112	103	84.47%	15.53%	0.00%	89.32%
DAR	ENGL 2112	Masked					ENGL 2112	60	53.33%	46.67%	0.00%	88.33%
DSC	ENGL 2112	Masked					ENGL 2112	174	74.71%	24.71%	0.57%	94.25%
FVSU	ENGL 2112	12	33.33%	50.00%	16.67%	83.33%	ENGL 2112	58	39.66%	60.34%	0.00%	81.03%
GHC	ENGL 2112	Masked					ENGL 2112	112	68.75%	31.25%	0.00%	83.93%
MGSC	ENGL 2112	8	87.50%	12.50%	0.00%	100.00%	ENGL 2112	299	71.91%	28.09%	0.00%	87.63%
SPSU	ENGL 2112	16	87.50%	6.25%	6.25%	93.75%	ENGL 2112	35	97.14%	2.86%	0.00%	97.14%
SSU	ENGL 2112	Masked					ENGL 2112	Not Reported				
UNG	ENGL 2112	25	80.00%	20.00%	0.00%	96.00%	ENGL 2112	570	85.44%	14.39%	0.18%	93.51%
UWG	ENGL 2112	Masked					ENGL 2110	See Above				
VSU	ENGL 2112	22	81.82%	13.64%	4.55%	95.45%	ENGL 2112	540	86.85%	12.96%	0.19%	95.93%

Legend:

- Masked Identified data not represented because the eCore or Campus course enrollment was for seven or fewer students
- Not Reported Identifies an eCore course that may not have a comparative campus course offered by the affiliate

eCore Course

Equivalent Seated Campus Course

Affiliate	eCore Course	HCT	Percent Successful Course Completion (Grades A-B-C)	Percent Unsuccessful Course Completion (Grades D-F-W-WM-WF)	Percent Incompletion (Grades I-NR)	Percent Course Completion (No Withdrawals)	Equivalent Course	HCT	Percent Successful Course Completion (Grades A-B-C)	Percent Unsuccessful Course Completion (Grades D-F-W-WM-WF)	Percent Incompletion (Grades I-NR)	Percent Course Completion (No Withdrawals)
	ENGL 2131	207	69.08%	29.95%	0.97%	88.41%						
ABAC	ENGL 2131	Masked					ENGL 2131	12	100.00%	0.00%	0.00%	100.00%
CCGA	ENGL 2131	Masked					ENGL 2131	Not Reported				
CLSU	ENGL 2131	Masked					ENGL 2131	176	77.84%	22.16%	0.00%	84.66%
DAR	ENGL 2131	9	66.67%	33.33%	0.00%	77.78%	ENGL 2131	137	67.15%	32.85%	0.00%	96.13%
DSC	ENGL 2131	23	82.61%	17.39%	0.00%	91.30%	ENGL 2131	107	90.65%	9.35%	0.00%	91.59%
FVSU	ENGL 2131	Masked					ENGL 2131	Not Reported				
GHC	ENGL 2131	Masked					ENGL 2131	51	66.67%	33.33%	0.00%	84.31%
MGSC	ENGL 2131	14	71.43%	21.43%	7.14%	92.86%	ENGL 2131	128	74.22%	25.78%	0.00%	89.84%
SPSU	ENGL 2131	26	76.92%	23.08%	0.00%	92.31%	ENGL 2131	69	79.71%	20.29%	0.00%	95.65%
SSU	ENGL 2131	25	40.00%	56.00%	4.00%	80.00%	ENGL 2131	31	67.74%	32.26%	0.00%	90.32%
UNG	ENGL 2131	54	75.93%	24.07%	0.00%	92.59%	ENGL 2131	248	80.65%	18.95%	0.40%	91.53%
UWG	ENGL 2131	17	58.82%	41.18%	0.00%	82.35%	ENGL 2130	195	82.56%	16.92%	0.51%	99.49%
VSU	ENGL 2131	10	70.00%	30.00%	0.00%	80.00%	ENGL 2131	Not Reported				
	ENGL 2132	315	73.33%	26.35%	0.32%	87.94%						
ABAC	ENGL 2132	16	56.25%	43.75%	0.00%	87.50%	ENGL 2132	Not Reported				
ASU	ENGL 2132	Masked					ENGL 2132	Not Reported				
CLSU	ENGL 2132	15	53.33%	46.67%	0.00%	73.33%	ENGL 2132	173	77.46%	21.97%	0.58%	87.28%
DAR	ENGL 2132	Masked					ENGL 2132	75	56.00%	42.67%	1.33%	81.33%
DSC	ENGL 2132	27	74.07%	25.93%	0.00%	85.19%	ENGL 2131	100	82.00%	18.00%	0.00%	93.00%
FVSU	ENGL 2132	Masked					ENGL 2132	Not Reported				
MGSC	ENGL 2132	Masked					ENGL 2132	268	73.51%	26.12%	0.37%	92.54%
SPSU	ENGL 2132	83	69.88%	28.92%	1.20%	84.34%	ENGL 2132	333	81.68%	18.32%	0.00%	89.19%
SSU	ENGL 2132	16	56.25%	43.75%	0.00%	87.50%	ENGL 2132	89	79.78%	20.22%	0.00%	96.63%
UNG	ENGL 2132	103	83.50%	16.50%	0.00%	93.20%	ENGL 2132	419	87.83%	12.17%	0.00%	95.47%
UWG	ENGL 2132	20	85.00%	15.00%	0.00%	100.00%	ENGL 2130	See Above				
VSU	ENGL 2132	20	70.00%	30.00%	0.00%	80.00%	ENGL 2132	Not Reported				
	ENVS 2202	565	76.28%	23.54%	0.18%	91.68%						
ABAC	ENVS 2202	13	84.62%	15.38%	0.00%	100.00%	SCIE 1005	365	83.84%	16.16%	0.00%	97.81%
ASU	ENVS 2202	15	46.67%	53.33%	0.00%	93.33%	ENVS 2202	Not Reported				
CCGA	ENVS 2202	18	55.56%	44.44%	0.00%	88.89%	BIOL 1120	241	87.14%	12.86%	0.00%	97.10%
CLSU	ENVS 2202	58	79.31%	18.97%	1.72%	93.10%	ENVS 2202	Not Reported				
CSU	ENVS 2202	13	100.00%	0.00%	0.00%	100.00%	ENVS 2202	Not Reported				
DSC	ENVS 2202	18	72.22%	27.78%	0.00%	88.89%	ENVS 2202	Not Reported				
FVSU	ENVS 2202	18	55.56%	44.44%	0.00%	94.44%	BIOL 1105	181	58.56%	41.44%	0.00%	98.90%
MGSC	ENVS 2202	16	62.50%	37.50%	0.00%	100.00%	ENVS 2202	Not Reported				
SPSU	ENVS 2202	136	76.47%	23.53%	0.00%	90.44%	ENVS 2202	Not Reported				
SSU	ENVS 2202	Masked					ENVS 2202	Not Reported				

Legend:

Masked Identified data not represented because the eCore or Campus course enrollment was for seven or fewer students
 Not Reported Identifies an eCore course that may not have a comparative campus course offered by the affiliate

eCore Course

Equivalent Seated Campus Course

Affiliate	eCore Course	HCT	Percent Successful Course Completion (Grades A-B-C)	Percent Unsuccessful Course Completion (Grades D-F-W-WM-WF)	Percent Incompletion (Grades I-NR)	Percent Course Completion (No Withdrawals)	Equivalent Course	HCT	Percent Successful Course Completion (Grades A-B-C)	Percent Unsuccessful Course Completion (Grades D-F-W-WM-WF)	Percent Incompletion (Grades I-NR)	Percent Course Completion (No Withdrawals)
UNG	ENVS 2202	14	71.43%	28.57%	0.00%	85.71%	BIOL 1260	1015	88.57%	11.43%	0.00%	95.57%
UWG	ENVS 2202	127	80.31%	19.69%	0.00%	89.76%	ENVS 2202	Not Reported				
VSU	ENVS 2202	113	79.65%	20.35%	0.00%	92.92%	ENVS 2202	Not Reported				
	ETEC 1101	57	78.95%	17.54%	3.51%	92.98%						
CCGA	ETEC 1101	Masked					ETEC 1101	Not Reported				
CLSU	ETEC 1101	Masked					ETEC 1101	Not Reported				
DSC	ETEC 1101	Masked					ETEC 1101	Not Reported				
FVSU	ETEC 1101	Masked					ETEC 1101	Not Reported				
SPSU	ETEC 1101	Masked					ETEC 1101	Not Reported				
SSU	ETEC 1101	Masked					ETEC 1101	Not Reported				
UNG	ETEC 1101	Masked					ETEC 1101	Not Reported				
UWG	ETEC 1101	9	88.89%	11.11%	0.00%	88.89%	ETEC 1101	Not Reported				
VSU	ETEC 1101	33	84.85%	12.12%	3.03%	93.94%	ETEC 1101	Not Reported				
	GEOL 1011K	482	61.20%	38.80%	0.00%	80.08%						
ABAC	GEOL 1011K	9	55.56%	44.44%	0.00%	66.67%	GEOL 1011K	Not Reported				
ASU	GEOL 1011K	Masked					GEOL 1011K	Not Reported				
CCGA	GEOL 1011K	9	44.44%	55.56%	0.00%	66.67%	GEOL 1121	76	81.58%	18.42%	0.00%	94.74%
CLSU	GEOL 1011K	32	59.38%	40.63%	0.00%	81.25%	GEOL 1011K	Not Reported				
DSC	GEOL 1011K	32	71.88%	28.13%	0.00%	87.50%	GEOL 1121K	138	82.61%	16.67%	0.72%	94.93%
FVSU	GEOL 1011K	Masked					GEOL 1011K	Masked				
MGSC	GEOL 1011K	29	55.17%	44.83%	0.00%	68.97%	GEOL 1011K	Not Reported				
SPSU	GEOL 1011K	108	66.67%	33.33%	0.00%	84.26%	GEOL 1011K	Not Reported				
UNG	GEOL 1011K	38	60.53%	39.47%	0.00%	81.58%	GEOL 1211K	168	86.31%	13.69%	0.00%	92.26%
UWG	GEOL 1011K	100	58.00%	42.00%	0.00%	76.00%	GEOL 1121	1184	79.48%	20.52%	0.00%	96.20%
VSU	GEOL 1011K	121	61.16%	38.84%	0.00%	81.82%	GEOL 1011K	Not Reported				
	HIST 1111	1088	70.31%	29.60%	0.09%	88.97%						
ABAC	HIST 1111	12	75.00%	25.00%	0.00%	100.00%	HIST 1111	74	86.49%	13.51%	0.00%	97.30%
ASU	HIST 1111	18	72.22%	27.78%	0.00%	94.44%	HIST 1111	351	90.60%	5.98%	3.42%	98.01%
CCGA	HIST 1111	24	95.83%	4.17%	0.00%	95.83%	HIST 1111	Not Reported				
CLSU	HIST 1111	81	71.60%	28.40%	0.00%	90.12%	HIST 1111	514	72.37%	27.63%	0.00%	86.96%
DSC	HIST 1111	29	72.41%	27.59%	0.00%	89.66%	HIST 1111	166	79.52%	19.88%	0.60%	97.59%
FVSU	HIST 1111	58	44.83%	53.45%	1.72%	77.59%	HIST 1111	210	61.43%	38.57%	0.00%	96.67%
MGSC	HIST 1111	36	55.56%	44.44%	0.00%	88.89%	HIST 1111	718	71.87%	28.13%	0.00%	91.64%
SPSU	HIST 1111	220	75.91%	24.09%	0.00%	90.45%	HIST 1111	259	91.12%	8.88%	0.00%	98.46%
SSU	HIST 1111	11	36.36%	63.64%	0.00%	100.00%	HIST 1111	84	57.14%	42.86%	0.00%	95.24%
UNG	HIST 1111	137	70.80%	29.20%	0.00%	88.32%	HIST 1111	417	79.86%	20.14%	0.00%	91.85%
UWG	HIST 1111	422	70.38%	29.62%	0.00%	89.10%	HIST 1111	838	85.80%	14.08%	0.12%	97.26%
VSU	HIST 1111	40	75.00%	25.00%	0.00%	82.50%	HIST 1011	109	71.56%	28.44%	0.00%	93.58%

Legend:

- Masked Identified data not represented because the eCore or Campus course enrollment was for seven or fewer students
- Not Reported Identifies an eCore course that may not have a comparative campus course offered by the affiliate

eCore Course

Equivalent Seated Campus Course

Affiliate	eCore Course	HCT	Percent Successful Course Completion (Grades A-B-C)	Percent Unsuccessful Course Completion (Grades D-F-W-WM-WF)	Percent Incompletion (Grades I-NR)	Percent Course Completion (No Withdrawals)	Equivalent Course	HCT	Percent Successful Course Completion (Grades A-B-C)	Percent Unsuccessful Course Completion (Grades D-F-W-WM-WF)	Percent Incompletion (Grades I-NR)	Percent Course Completion (No Withdrawals)
	HIST 2111	1248	66.91%	32.93%	0.16%	89.10%						
ABAC	HIST 2111	56	62.50%	37.50%	0.00%	78.57%	HIST 2111	662	79.46%	20.39%	0.15%	94.11%
ASU	HIST 2111	20	40.00%	60.00%	0.00%	90.00%	HIST 2111	224	82.14%	12.95%	4.91%	99.11%
CCGA	HIST 2111	66	65.15%	34.85%	0.00%	87.88%	HIST 2111	574	68.12%	31.71%	0.17%	93.90%
CLSU	HIST 2111	48	72.92%	27.08%	0.00%	87.50%	HIST 2111	668	76.50%	23.50%	0.00%	91.92%
DSC	HIST 2111	91	69.23%	30.77%	0.00%	87.91%	HIST 2111	617	74.55%	25.45%	0.00%	94.33%
FVSU	HIST 2111	54	59.26%	38.89%	1.85%	88.89%	HIST 2111	195	36.92%	63.08%	0.00%	87.18%
GHC	HIST 2111	Masked					HIST 2111	491	62.73%	37.27%	0.00%	87.98%
MGSC	HIST 2111	62	67.74%	32.26%	0.00%	90.32%	HIST 2111	1098	68.85%	31.15%	0.00%	91.53%
SPSU	HIST 2111	124	73.39%	26.61%	0.00%	87.90%	HIST 2111	359	86.91%	13.09%	0.00%	96.38%
SSU	HIST 2111	104	56.73%	42.31%	0.96%	90.38%	HIST 2111	178	89.33%	10.67%	0.00%	96.63%
UNG	HIST 2111	207	71.50%	28.50%	0.00%	87.92%	HIST 2111	2069	74.53%	25.37%	0.10%	91.83%
UWG	HIST 2111	267	65.54%	34.46%	0.00%	89.14%	HIST 2111	1207	74.32%	25.43%	0.25%	94.53%
VSU	HIST 2111	144	70.83%	29.17%	0.00%	95.83%	HIST 2111	829	74.07%	25.81%	0.12%	93.61%
	MATH 1101	291	62.20%	37.11%	0.69%	83.85%						
ABAC	MATH 1101	Masked					MATH 1101	Not Reported				
ASU	MATH 1101	Masked					MATH 1101	Not Reported				
CCGA	MATH 1101	Masked					MATH 1101	Not Reported				
CLSU	MATH 1101	46	56.52%	43.48%	0.00%	80.43%	MATH 1101	537	59.59%	40.41%	0.00%	90.13%
DSC	MATH 1101	14	64.29%	35.71%	0.00%	92.86%	MATH 1101	449	68.60%	31.40%	0.00%	92.43%
FVSU	MATH 1101	10	30.00%	70.00%	0.00%	90.00%	MATH 1101	91	71.43%	28.57%	0.00%	90.11%
MGSC	MATH 1101	63	63.49%	36.51%	0.00%	87.30%	MATH 1101	1996	67.03%	32.92%	0.05%	93.69%
SPSU	MATH 1101	8	50.00%	37.50%	12.50%	87.50%	MATH 1101	Not Reported				
UNG	MATH 1101	40	75.00%	25.00%	0.00%	82.50%	MATH 1101	435	89.43%	10.57%	0.00%	94.71%
UWG	MATH 1101	39	64.10%	33.33%	2.56%	87.18%	MATH 1001	751	76.43%	23.30%	0.27%	97.20%
VSU	MATH 1101	53	62.26%	37.74%	0.00%	83.02%	MATH 1101	462	77.27%	22.73%	0.00%	92.42%
	MATH 1111	715	58.46%	41.40%	0.14%	85.17%						
ABAC	MATH 1111	52	57.69%	42.31%	0.00%	80.77%	MATH 1111	1308	53.67%	46.33%	0.00%	91.44%
ASU	MATH 1111	10	30.00%	70.00%	0.00%	100.00%	MATH 1111	677	65.58%	33.83%	0.59%	98.08%
ASU	MATH 1111						MATH 1111A	8	37.50%	62.50%	0.00%	100.00%
CCGA	MATH 1111	40	55.00%	45.00%	0.00%	85.00%	MATH 1111	786	65.01%	34.99%	0.00%	95.17%
CLSU	MATH 1111	39	66.67%	33.33%	0.00%	79.49%	MATH 1111	720	68.33%	31.67%	0.00%	93.19%
DAR	MATH 1111	Masked					MATH 1111	429	47.09%	52.91%	0.00%	75.76%
DSC	MATH 1111	40	55.00%	45.00%	0.00%	82.50%	MATH 1111	924	72.29%	27.38%	0.32%	89.29%
FVSU	MATH 1111	36	30.56%	69.44%	0.00%	88.89%	MATH 1111	280	50.36%	49.64%	0.00%	90.36%
MGSC	MATH 1111	35	60.00%	40.00%	0.00%	80.00%	MATH 1111	600	71.33%	28.67%	0.00%	92.00%
SPSU	MATH 1111	98	62.24%	37.76%	0.00%	83.67%	MATH 1111	651	69.28%	30.72%	0.00%	93.86%
SSU	MATH 1111	16	0.00%	100.00%	0.00%	87.50%	MATH 1111	488	57.79%	41.80%	0.41%	92.21%

Legend:

Masked Identified data not represented because the eCore or Campus course enrollment was for seven or fewer students
 Not Reported Identifies an eCore course that may not have a comparative campus course offered by the affiliate

eCore Course

Equivalent Seated Campus Course

Affiliate	eCore Course	HCT	Percent Successful Course Completion (Grades A-B-C)	Percent Unsuccessful Course Completion (Grades D-F-W-WM-WF)	Percent Incompletion (Grades I-NR)	Percent Course Completion (No Withdrawals)	Equivalent Course	HCT	Percent Successful Course Completion (Grades A-B-C)	Percent Unsuccessful Course Completion (Grades D-F-W-WM-WF)	Percent Incompletion (Grades I-NR)	Percent Course Completion (No Withdrawals)
UNG	MATH 1111	131	66.41%	32.82%	0.76%	87.02%	MATH 1111	3427	64.93%	34.99%	0.09%	86.49%
UWG	MATH 1111	167	61.08%	38.92%	0.00%	86.23%	MATH 1111	1886	72.22%	27.73%	0.05%	94.27%
VSU	MATH 1111	48	64.58%	35.42%	0.00%	89.58%	MATH 1111	1381	68.94%	31.06%	0.00%	92.32%
	MATH 1113	661	58.40%	41.60%	0.00%	84.72%						
ABAC	MATH 1113	9	88.89%	11.11%	0.00%	100.00%	MATH 1113	33	75.76%	24.24%	0.00%	84.85%
ASU	MATH 1113	26	50.00%	50.00%	0.00%	100.00%	MATH 1113	510	64.71%	35.29%	0.00%	92.94%
CCGA	MATH 1113	21	61.90%	38.10%	0.00%	76.19%	MATH 1113	79	64.56%	35.44%	0.00%	93.67%
CLSU	MATH 1113	14	100.00%	0.00%	0.00%	100.00%	MATH 1113	65	86.15%	13.85%	0.00%	95.38%
DAR	MATH 1113	Masked					MATH 1113	50	72.00%	28.00%	0.00%	92.00%
DSC	MATH 1113	23	52.17%	47.83%	0.00%	78.26%	MATH 1113	437	73.00%	26.77%	0.23%	86.04%
FVSU	MATH 1113	11	45.45%	54.55%	0.00%	90.91%	MATH 1113	118	78.81%	21.19%	0.00%	93.22%
MGSC	MATH 1113	34	55.88%	44.12%	0.00%	88.24%	MATH 1113	100	75.00%	25.00%	0.00%	94.00%
SPSU	MATH 1113	214	56.07%	43.93%	0.00%	81.31%	MATH 1113	944	59.00%	41.00%	0.00%	87.08%
SSU	MATH 1113	15	13.33%	86.67%	0.00%	73.33%	MATH 1113	499	54.31%	44.89%	0.80%	91.38%
UNG	MATH 1113	93	61.29%	38.71%	0.00%	86.02%	MATH 1113	2395	69.19%	30.73%	0.08%	86.39%
UWG	MATH 1113	179	59.78%	40.22%	0.00%	84.36%	MATH 1113	791	67.51%	32.49%	0.00%	94.31%
VSU	MATH 1113	16	81.25%	18.75%	0.00%	93.75%	MATH 1113	190	74.21%	25.79%	0.00%	87.89%
	MATH 1401	595	56.47%	43.36%	0.17%	83.36%						
ABAC	MATH 1401	14	57.14%	42.86%	0.00%	92.86%	MATH 1401	Not Reported				
ASU	MATH 1401	20	45.00%	55.00%	0.00%	75.00%	MATH 2411	184	79.89%	20.11%	0.00%	97.28%
CCGA	MATH 1401	36	44.44%	55.56%	0.00%	83.33%	MATH 2112	662	65.71%	33.23%	1.06%	94.26%
CLSU	MATH 1401	63	55.56%	42.86%	1.59%	79.37%	MATH 1401	Not Reported				
DAR	MATH 1401	Masked					MATH 2205	342	58.77%	40.35%	0.88%	86.26%
DSC	MATH 1401	59	55.93%	44.07%	0.00%	81.36%	MATH 2200	368	83.42%	16.30%	0.27%	93.48%
FVSU	MATH 1401	8	50.00%	50.00%	0.00%	75.00%	MATH 2113	93	89.25%	10.75%	0.00%	100.00%
MGSC	MATH 1401	30	60.00%	40.00%	0.00%	90.00%	MATH 1200	1659	72.57%	27.43%	0.00%	93.55%
SPSU	MATH 1401	98	64.29%	35.71%	0.00%	87.76%	MATH 2260	679	81.30%	18.56%	0.15%	97.05%
SSU	MATH 1401	Masked					MATH 1401	Not Reported				
UNG	MATH 1401	98	59.18%	40.82%	0.00%	82.65%	MATH 2400	2871	81.37%	18.63%	0.00%	91.36%
UWG	MATH 1401	121	59.50%	40.50%	0.00%	84.30%	MATH 2063	617	83.47%	16.53%	0.00%	95.95%
VSU	MATH 1401	40	50.00%	50.00%	0.00%	77.50%	MATH 2620	808	76.86%	23.14%	0.00%	91.83%
	MATH 1501	346	51.45%	48.27%	0.29%	71.97%						
ABAC	MATH 1501	Masked					MATH 2053	130	77.69%	22.31%	0.00%	96.15%
ASU	MATH 1501	Masked					MATH 1211	154	53.90%	46.10%	0.00%	89.61%
CCGA	MATH 1501	13	38.46%	61.54%	0.00%	69.23%	MATH 1121	121	60.33%	39.67%	0.00%	89.26%
CLSU	MATH 1501	20	40.00%	60.00%	0.00%	45.00%	MATH 1501	189	55.03%	44.97%	0.00%	82.01%
DSC	MATH 1501	Masked					MATH 2253	265	63.77%	36.23%	0.00%	83.40%
FVSU	MATH 1501	17	41.18%	58.82%	0.00%	82.35%	MATH 1154	143	55.24%	44.76%	0.00%	90.91%

Legend:

- Masked Identified data not represented because the eCore or Campus course enrollment was for seven or fewer students
- Not Reported Identifies an eCore course that may not have a comparative campus course offered by the affiliate

Academic Information

eCore Course

Equivalent Seated Campus Course

Affiliate	eCore Course	HCT	Percent Successful Course Completion (Grades A-B-C)	Percent Unsuccessful Course Completion (Grades D-F-W-WM-WF)	Percent Incompletion (Grades I-NR)	Percent Course Completion (No Withdrawals)	Equivalent Course	HCT	Percent Successful Course Completion (Grades A-B-C)	Percent Unsuccessful Course Completion (Grades D-F-W-WM-WF)	Percent Incompletion (Grades I-NR)	Percent Course Completion (No Withdrawals)
MGSC	MATH 1501	14	50.00%	50.00%	0.00%	78.57%	MATH 1251	266	69.55%	30.45%	0.00%	89.85%
SPSU	MATH 1501	139	55.40%	44.60%	0.00%	76.26%	MATH 2253	943	54.98%	44.92%	0.11%	88.03%
SSU	MATH 1501	Masked					MATH 2101	169	49.70%	49.70%	0.59%	90.53%
UNG	MATH 1501	41	68.29%	31.71%	0.00%	78.05%	MATH 1450	941	63.44%	36.56%	0.00%	80.45%
UWG	MATH 1501	70	48.57%	51.43%	0.00%	74.29%	MATH 1634	404	55.69%	44.06%	0.25%	87.87%
VSU	MATH 1501	11	36.36%	54.55%	9.09%	45.45%	MATH 2261	435	60.46%	39.54%	0.00%	88.74%
	PHIL 2010	636	62.74%	37.26%	0.00%	83.33%						
ABAC	PHIL 2010	Masked					PHIL 2010	Not Reported				
ASU	PHIL 2010	15	66.67%	33.33%	0.00%	86.67%	PHIL 2101	26	65.38%	30.77%	3.85%	96.15%
CCGA	PHIL 2010	27	66.67%	33.33%	0.00%	85.19%	PHIL 2010	80	65.00%	35.00%	0.00%	97.50%
CLSU	PHIL 2010	60	60.00%	40.00%	0.00%	83.33%	PHIL 2010	352	80.97%	19.03%	0.00%	91.76%
DAR	PHIL 2010	Masked					PHIL 2010	32	90.63%	9.38%	0.00%	93.75%
DSC	PHIL 2010	21	66.67%	33.33%	0.00%	90.48%	PHIL 2010	102	87.25%	9.80%	2.94%	97.06%
FVSU	PHIL 2010	35	60.00%	40.00%	0.00%	85.71%	PHIL 2010	172	65.70%	34.30%	0.00%	88.37%
MGSC	PHIL 2010	14	42.86%	57.14%	0.00%	64.29%	PHIL 2010	Not Reported				
SPSU	PHIL 2010	40	57.50%	42.50%	0.00%	72.50%	PHIL 2010	Not Reported				
SSU	PHIL 2010	22	45.45%	54.55%	0.00%	81.82%	PHIL 2010	Not Reported				
UNG	PHIL 2010	100	65.00%	35.00%	0.00%	75.00%	PHIL 2010	316	78.80%	21.20%	0.00%	90.19%
UWG	PHIL 2010	243	63.79%	36.21%	0.00%	87.65%	PHIL 2010	570	77.19%	22.81%	0.00%	93.51%
VSU	PHIL 2010	54	72.22%	27.78%	0.00%	88.89%	PHIL 2010	272	77.21%	22.79%	0.00%	90.81%
	PHYS 1211K	89	52.81%	46.07%	1.12%	76.40%						
ABAC	PHYS 1211K	Masked					PHYS 2211	23	86.96%	13.04%	0.00%	86.96%
ABAC	PHYS 1211K	Masked					PHYS 2211L	23	86.96%	13.04%	0.00%	86.96%
ASU	PHYS 1211K	Masked					PHYS 2211	14	35.71%	57.14%	7.14%	100.00%
ASU	PHYS 1211K	Masked					PHYS 2211L	13	69.23%	23.08%	7.69%	100.00%
CCGA	PHYS 1211K	8	25.00%	75.00%	0.00%	50.00%	PHYS 2211	16	62.50%	37.50%	0.00%	93.75%
CLSU	PHYS 1211K	Masked					PHYS 2211	58	67.24%	32.76%	0.00%	87.93%
CLSU	PHYS 1211K	Masked					PHYS 2211L	55	78.18%	21.82%	0.00%	87.27%
DSC	PHYS 1211K	Masked					PHYS 2211K	84	60.71%	39.29%	0.00%	75.00%
FVSU	PHYS 1211K	Masked					PHYS 2211	21	95.24%	4.76%	0.00%	100.00%
MGSC	PHYS 1211K	Masked					PHYS 2211	78	58.97%	41.03%	0.00%	75.64%
SPSU	PHYS 1211K	35	60.00%	40.00%	0.00%	88.57%	PHYS 2211	569	67.31%	32.69%	0.00%	93.15%
SPSU	PHYS 1211K						PHYS 2211L	556	90.47%	9.53%	0.00%	93.35%
UNG	PHYS 1211K	13	38.46%	53.85%	7.69%	61.54%	PHYS 2211	309	72.17%	27.83%	0.00%	87.38%
UNG	PHYS 1211K						PHYS 2211L	297	76.09%	23.91%	0.00%	86.87%
UWG	PHYS 1211K	12	41.67%	58.33%	0.00%	58.33%	PHYS 2211	235	80.00%	20.00%	0.00%	88.94%
VSU	PHYS 1211K	Masked					PHYS 2211K	136	54.41%	45.59%	0.00%	81.62%

Legend:

- Masked Identified data not represented because the eCore or Campus course enrollment was for seven or fewer students
- Not Reported Identifies an eCore course that may not have a comparative campus course offered by the affiliate

eCore Course

Equivalent Seated Campus Course

Affiliate	eCore Course	HCT	Percent Successful Course Completion (Grades A-B-C)	Percent Unsuccessful Course Completion (Grades D-F-W-WM-WF)	Percent Incompletion (Grades I-NR)	Percent Course Completion (No Withdrawals)	Equivalent Course	HCT	Percent Successful Course Completion (Grades A-B-C)	Percent Unsuccessful Course Completion (Grades D-F-W-WM-WF)	Percent Incompletion (Grades I-NR)	Percent Course Completion (No Withdrawals)
	POLS 1101	993	80.16%	19.74%	0.10%	94.16%						
ABAC	POLS 1101	44	72.73%	27.27%	0.00%	86.36%	POLS 1101	913	85.65%	14.35%	0.00%	97.04%
ASU	POLS 1101	8	75.00%	25.00%	0.00%	87.50%	POLS 1101	730	86.30%	13.29%	0.41%	97.67%
CCGA	POLS 1101	57	78.95%	21.05%	0.00%	96.49%	POLS 1101	717	72.52%	27.48%	0.00%	93.03%
CLSU	POLS 1101	50	88.00%	12.00%	0.00%	94.00%	POLS 1101	1233	78.99%	21.01%	0.00%	95.30%
DAR	POLS 1101	Masked					POLS 1101	727	72.63%	27.37%	0.00%	92.85%
DSC	POLS 1101	72	80.56%	19.44%	0.00%	91.67%	POLS 1101	1080	82.13%	16.85%	1.02%	94.63%
FVSU	POLS 1101	41	82.93%	17.07%	0.00%	97.56%	POLS 1101	269	91.82%	8.18%	0.00%	99.26%
GHC	POLS 1101	20	80.00%	20.00%	0.00%	90.00%	POLS 1101	723	79.81%	20.19%	0.00%	94.61%
MGSC	POLS 1101	64	71.88%	26.56%	1.56%	95.31%	POLS 1101	1956	66.00%	34.00%	0.00%	89.83%
SPSU	POLS 1101	78	80.77%	19.23%	0.00%	92.31%	POLS 1101	38	73.68%	26.32%	0.00%	100.00%
SSU	POLS 1101	12	58.33%	41.67%	0.00%	100.00%	POLS 1101	742	64.96%	29.65%	5.39%	95.96%
UNG	POLS 1101	145	82.76%	17.24%	0.00%	93.10%	POLS 1101	2752	82.16%	17.84%	0.00%	93.90%
UWG	POLS 1101	240	80.83%	19.17%	0.00%	96.67%	POLS 1101	2307	80.80%	18.94%	0.26%	96.92%
VSU	POLS 1101	161	80.75%	19.25%	0.00%	93.79%	POLS 1101	1605	85.36%	14.58%	0.06%	95.83%
	PSYC 1101	753	74.10%	25.50%	0.40%	91.50%						
ABAC	PSYC 1101	56	76.79%	23.21%	0.00%	92.86%	PSYC 1101	443	77.20%	21.90%	0.90%	97.97%
ASU	PSYC 1101	21	80.95%	19.05%	0.00%	95.24%	PSYC 1101	391	81.07%	18.67%	0.26%	96.68%
CCGA	PSYC 1101	39	74.36%	25.64%	0.00%	94.87%	PSYC 1101	626	81.31%	18.69%	0.00%	96.01%
CLSU	PSYC 1101	33	81.82%	18.18%	0.00%	84.85%	PSYC 1101	675	82.22%	17.78%	0.00%	94.67%
DSC	PSYC 1101	54	72.22%	27.78%	0.00%	94.44%	PSYC 1101	988	75.61%	24.09%	0.30%	93.62%
FVSU	PSYC 1101	30	66.67%	33.33%	0.00%	90.00%	PSYC 1101	226	84.96%	15.04%	0.00%	99.12%
GHC	PSYC 1101	19	84.21%	15.79%	0.00%	94.74%	PSYC 1101	514	76.85%	23.15%	0.00%	93.39%
MGSC	PSYC 1101	44	70.45%	29.55%	0.00%	88.64%	PSYC 1101	1417	73.82%	26.11%	0.07%	94.21%
SPSU	PSYC 1101	60	85.00%	15.00%	0.00%	95.00%	PSYC 1101	322	88.51%	11.18%	0.31%	96.58%
SSU	PSYC 1101	22	40.91%	59.09%	0.00%	95.45%	PSYC 1101	197	89.85%	10.15%	0.00%	97.97%
UNG	PSYC 1101	113	72.57%	24.78%	2.65%	88.50%	PSYC 1101	3505	81.40%	18.60%	0.00%	93.75%
UWG	PSYC 1101	145	71.72%	28.28%	0.00%	91.72%	PSYC 1101	1198	78.21%	21.62%	0.17%	94.41%
VSU	PSYC 1101	117	76.92%	23.08%	0.00%	90.60%	PSYC 1101	926	80.67%	19.33%	0.00%	94.71%
	SOCI 1101	832	72.60%	27.28%	0.12%	91.59%						
ABAC	SOCI 1101	29	86.21%	13.79%	0.00%	93.10%	SOCI 1101	242	81.82%	18.18%	0.00%	98.35%
ASU	SOCI 1101	21	57.14%	42.86%	0.00%	85.71%	SOCI 1101	Not Reported				
CCGA	SOCI 1101	42	71.43%	28.57%	0.00%	92.86%	SOCI 1101	313	81.47%	18.53%	0.00%	96.49%
CLSU	SOCI 1101	17	70.59%	29.41%	0.00%	82.35%	SOCI 1101	574	76.48%	23.52%	0.00%	91.99%
DSC	SOCI 1101	81	79.01%	20.99%	0.00%	92.59%	SOCI 1101	268	73.13%	26.49%	0.37%	84.33%
FVSU	SOCI 1101	33	66.67%	33.33%	0.00%	96.97%	SOCI 1101	173	97.69%	2.31%	0.00%	98.84%
MGSC	SOCI 1101	68	64.71%	35.29%	0.00%	94.12%	SOCI 1101	647	90.26%	9.74%	0.00%	97.22%
SPSU	SOCI 1101	60	60.00%	40.00%	0.00%	90.00%	SOCI 1101	218	77.98%	22.02%	0.00%	94.95%

Legend:

- Masked Identified data not represented because the eCore or Campus course enrollment was for seven or fewer students
- Not Reported Identifies an eCore course that may not have a comparative campus course offered by the affiliate

eCore Course

Equivalent Seated Campus Course

Affiliate	eCore Course	HCT	Percent Successful Course Completion (Grades A-B-C)	Percent Unsuccessful Course Completion (Grades D-F-W-WM-WF)	Percent Incompletion (Grades I-NR)	Percent Course Completion (No Withdrawals)	Equivalent Course	HCT	Percent Successful Course Completion (Grades A-B-C)	Percent Unsuccessful Course Completion (Grades D-F-W-WM-WF)	Percent Incompletion (Grades I-NR)	Percent Course Completion (No Withdrawals)
SSU	SOCI 1101	27	40.74%	55.56%	3.70%	88.89%	SOCI 1101	82	58.54%	41.46%	0.00%	89.02%
UNG	SOCI 1101	166	80.72%	19.28%	0.00%	90.96%	SOCI 1101	1781	83.49%	16.45%	0.06%	94.39%
UWG	SOCI 1101	146	73.97%	26.03%	0.00%	91.78%	SOCI 1101	852	77.11%	22.77%	0.12%	92.84%
VSU	SOCI 1101	142	74.65%	25.35%	0.00%	91.55%	SOCI 1101	831	84.96%	14.92%	0.12%	96.15%
	SPAN 2001	228	64.47%	34.65%	0.88%	83.77%						
ABAC	SPAN 2001	Masked					SPAN 2001	Not Reported				
ASU	SPAN 2001	Masked					SPAN 2001	Masked				
CCGA	SPAN 2001	Masked					SPAN 2001	22	95.45%	4.55%	0.00%	100.00%
CLSU	SPAN 2001	17	52.94%	41.18%	5.88%	76.47%	SPAN 2001	169	94.08%	5.92%	0.00%	96.45%
DSC	SPAN 2001	Masked					SPAN 2001	Not Reported				
FVSU	SPAN 2001	35	65.71%	31.43%	2.86%	91.43%	SPAN 2001	166	74.70%	25.30%	0.00%	98.80%
MGSC	SPAN 2001	11	81.82%	18.18%	0.00%	81.82%	SPAN 2001	50	70.00%	30.00%	0.00%	86.00%
SPSU	SPAN 2001	Masked					SPAN 2001	Masked				
SSU	SPAN 2001	Masked					SPAN 2001	20	70.00%	30.00%	0.00%	95.00%
UNG	SPAN 2001	47	82.98%	17.02%	0.00%	91.49%	SPAN 2001	234	86.32%	13.68%	0.00%	91.88%
UWG	SPAN 2001	68	66.18%	33.82%	0.00%	85.29%	SPAN 2001	231	96.10%	3.46%	0.43%	97.40%
VSU	SPAN 2001	25	28.00%	72.00%	0.00%	64.00%	SPAN 2001	314	79.62%	20.38%	0.00%	92.36%
	SPAN 2002	175	66.86%	33.14%	0.00%	88.57%						
ABAC	SPAN 2002	Masked					SPAN 2002	Not Reported				
ASU	SPAN 2002	Masked					SPAN 2002	9	88.89%	11.11%	0.00%	100.00%
CCGA	SPAN 2002	Masked					SPAN 2002	Masked				
CLSU	SPAN 2002	8	50.00%	50.00%	0.00%	62.50%	SPAN 2002	70	91.43%	8.57%	0.00%	94.29%
DSC	SPAN 2002	Masked					SPAN 2002	Not Reported				
FVSU	SPAN 2002	Masked					SPAN 2002	Masked				
MGSC	SPAN 2002	Masked					SPAN 2002	16	93.75%	6.25%	0.00%	93.75%
SPSU	SPAN 2002	Masked					SPAN 2002	Masked				
UNG	SPAN 2002	27	77.78%	22.22%	0.00%	96.30%	SPAN 2002	92	83.70%	16.30%	0.00%	92.39%
UWG	SPAN 2002	96	70.83%	29.17%	0.00%	88.54%	SPAN 2002	186	82.26%	17.74%	0.00%	93.01%
VSU	SPAN 2002	21	47.62%	52.38%	0.00%	85.71%	SPAN 2002	168	96.43%	3.57%	0.00%	97.02%

Legend:

- Masked Identified data not represented because the eCore or Campus course enrollment was for seven or fewer students
- Not Reported Identifies an eCore course that may not have a comparative campus course offered by the affiliate

Semester Credit Hours Generated

Title	FY 2007	FY 2008	FY 2009	FY 2010	FY 2011	FY 2012	FY2013	FY 2014	FY 2015
American Government	1446	1368	1158	867	1143	1647	1782	2010	2979
American Literature I	NT	NT	NT	NT	NT	NT	NT	NT	621
American Literature II	438	267	384	255	363	585	633	663	945
Calculus I	204	220	252	268	212	444	572	628	1384
Chemistry I	232	212	196	296	324	628	584	740	1152
Chemistry II	136	120	132	244	180	304	360	280	512
College Algebra	699	618	660	681	846	1209	1332	1680	2145
Elect. Tech. in Ed. Environments	40	30	24	54	112	60	60	74	114
English Composition I	579	627	495	555	888	1095	1089	1323	1773
English Composition II	825	735	849	909	1008	1824	1992	2373	3237
Environmental Science	213	234	276	258	336	456	702	954	1695
Geosciences I	744	600	696	424	548	736	1048	1288	1928
Human Communication	702	624	672	657	798	1143	1353	1725	2232
Intermediate Spanish I	108	150	147	342	363	459	471	516	684
Intermediate Spanish II	45	96	138	186	237	372	327	288	525
Math Modeling	246	234	234	192	252	492	558	618	873
Philosophy	597	657	678	678	702	894	1062	1527	1908
Physics I	124	168	132	136	156	236	204	252	356
Physics II	16	20	NT	NT	NT	NT	NT	NT	NT
Pre-Calculus	501	387	411	504	612	1002	1095	1296	1983
Psychology	1167	969	846	816	900	1314	1542	1536	2259
Sociology	870	954	789	855	981	1389	1440	1857	2496
Statistics	438	402	393	405	519	819	891	1188	1785
U. S. History I	1350	1386	1494	1335	1530	1977	2043	2358	3744
World History I	1413	1551	1464	1518	1725	2460	2622	2463	3264
World Literature I	855	828	687	579	747	1698	1788	2196	2805
World Literature II	NT	NT	NT	NT	NT	NT	NT	NT	444
Total Credit Hours Generated	13988	13457	13207	13014	15482	23243	25550	29833	43843

NT = Course Not Taught

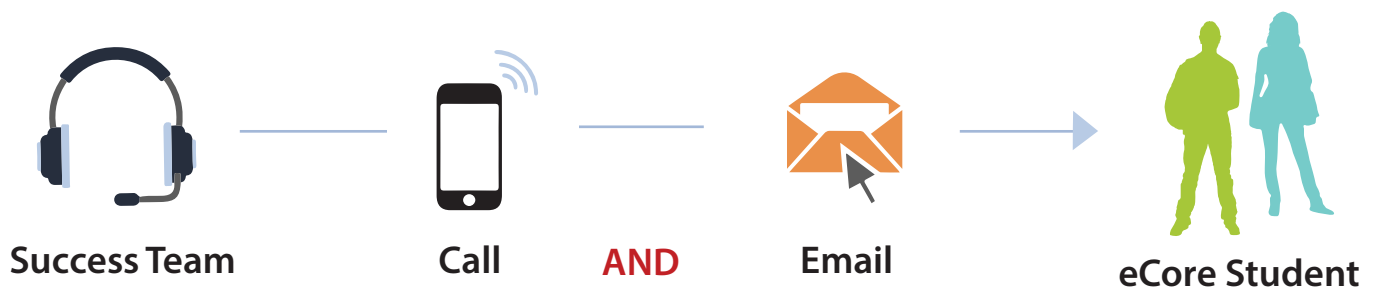
Student Engagement and Success

eCore has a clearly defined process for supporting and assisting students toward full engagement and success in eCore coursework. This includes providing students with access to academic resources and online tutoring options. The eCore intervention process has become one of the hallmarks of the program. This model provides instructors with an opportunity to report students on a weekly basis and allows the eCore Student Success Team to reach out and contact students to provide resource solutions. This closes the loop back to the professor on the follow-up process. If a student does choose to withdraw from an eCore course, a withdrawal survey is requested to gather data on the student's eCore learning experience; and the Student Success Team contacts the student about the withdrawal to provide details and options for an informed decision.

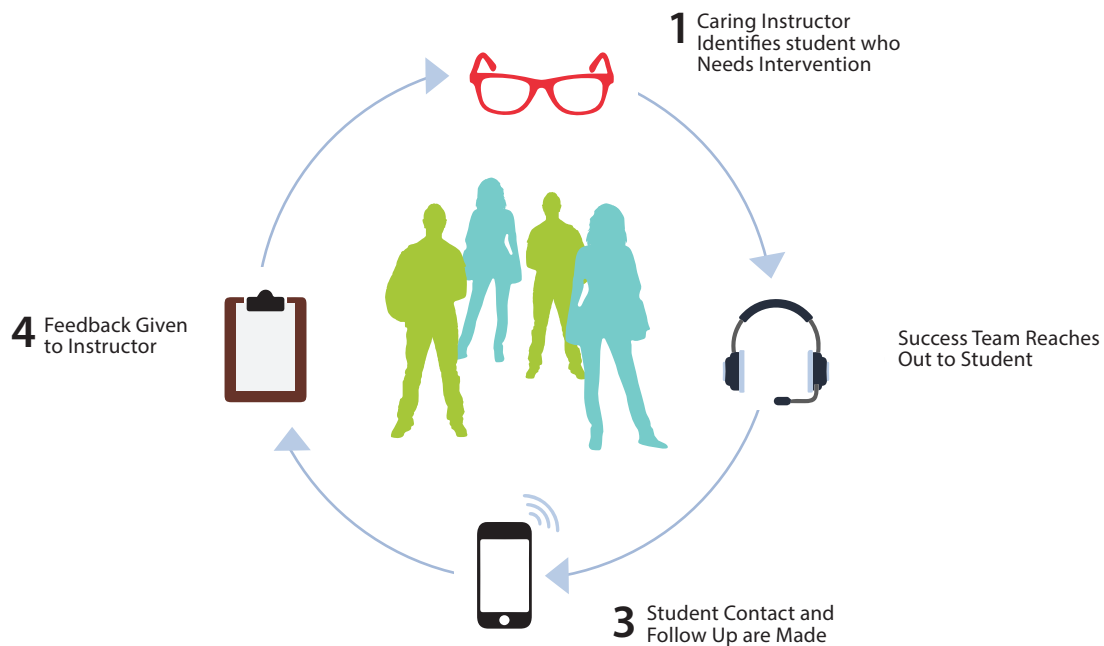
Engagement includes tutoring resources, preemptive and startup activities, the eCore Connection tutorial class, and in-term outbound contacts for at-risk and withdrawal activities.

Saving Our Students (SOS)

Preemptive and Startup Activities



Saving Our Students During the Semester



Smarthinking Online Tutoring

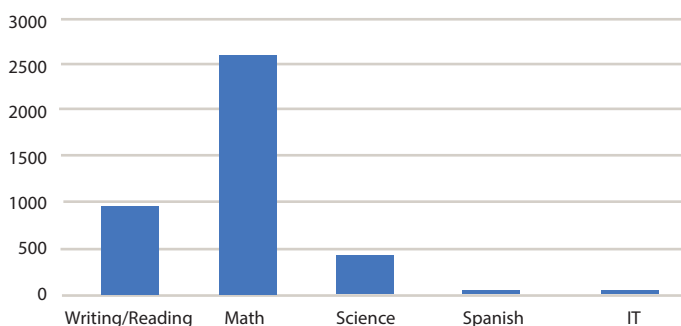
The Smarthinking online tutoring service is available to all eCore students for the duration of the term. This service is available to students on a 24/7 basis. Smarthinking tutors average more than 9 years of teaching or tutoring experience, and 90% have an advanced degree in their fields. Smarthinking adheres to the Socratic tutoring method.

- The Smarthinking online tutoring service is designed for students who are taking core academic courses.
- Online learning assistance is available from tutors in a variety of subjects, including mathematics, statistics, Spanish, chemistry, physics, and writing for all subjects.
- Since FY 2010, eCore has tracked the Smarthinking usage each semester. For FY 2015 there were 3974 tutoring sessions made by eCore students via Smarthinking with 2498 hours of total usage.
- This is an 85% increase in the number of sessions from FY 2014, and a 93% increase in the total hours of usage. The greatest amount of time and sessions was generated for Calculus during FY 2015, with a total of 1397 sessions and 889 hours.
- There were 528 distinct users who accessed Smarthinking during FY 2015.

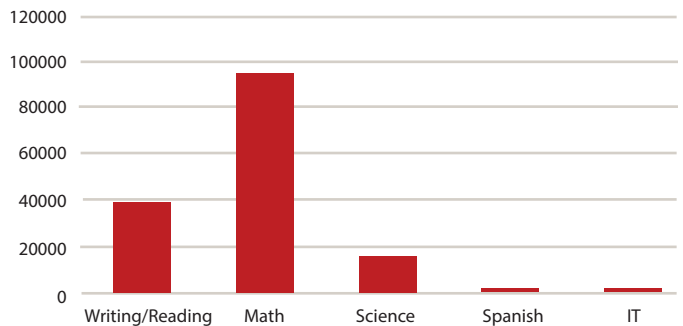
Smarthinking Session Visits

Subject	Total Sessions	Minutes
Algebra	363	12411
Algebra w/Audio	4	148
Basic Math Skills	23	705
Biology	4	54
Calculus Single Variable	1396	53294
Calculus Single Variable w/ Audio	1	37
Career Writing	4	168
Differential Equations	1	37
Essay Center	779	32718
General Chemistry	130	4569
Geometry & Trigonometry	197	7071
Grammar & Documentation Review	77	3234
Intro Human A&P	1	37
IT Support Windows 7	1	10
Liberal Arts Math	1	14
Live Essay Review w/Audio	4	148
Multivariable Calculus	3	81
Organic Chemistry	1	41
Paragraph Submission	13	351
Physics	264	10473
Reading	5	89
Reading w/Audio	2	74
Research and Documentation	5	116
Response to Literature	1	10
Resume or Cover Letter	3	126
Spanish w/Audio	2	64
Spanish Essay Center	1	42
Statistics	625	21839
Writing (All Subjects)	58	1759
Writing (All Subjects) w/Audio	5	185
Totals	3974	149905
Total in Hours		2498.42

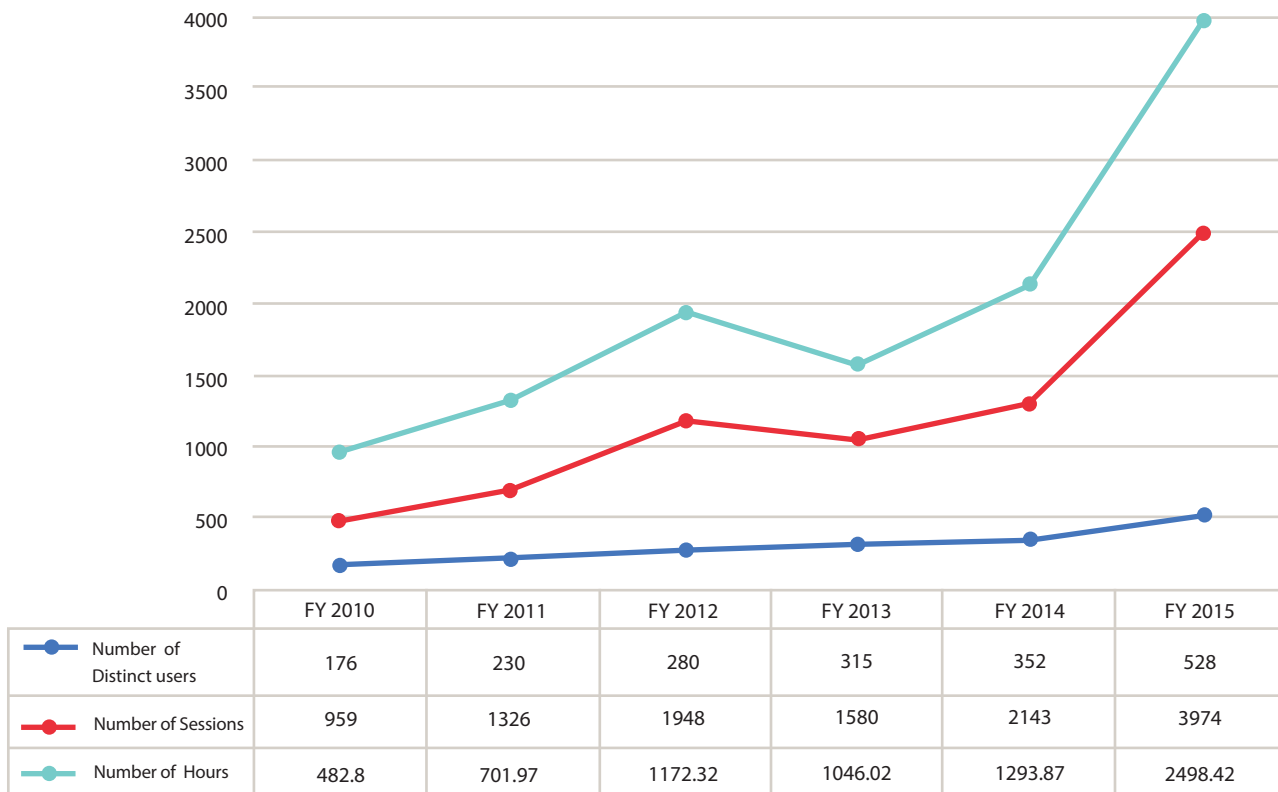
Number of Sessions Accessed per Subject



Minutes Used/Time Spent per Subject



Historical Smarthinking Usage



FY 2015 Embedded Tutor Activities

The following table represents the embedded tutor activities for FY 2015. Embedded tutors were placed in all eCore math and science classes for all three semesters, and an embedded tutor was also in the Spanish classes for Summer and Fall 2014 only.

Summer 2014, Fall 2014, and Spring 2015: CHEM 1211K, CHEM 1212K, ENVS 2202, GEOL 1011K, MATH 1101, MATH 1111, MATH 1113, MATH 1401, MATH 1501, and PHYS 1211K

Summer 2014 and Fall 2014 only: SPAN 2001, SPAN 2002

Embedded tutors monitored the Tutor Talk discussion board topics, responded to questions and made

substantive posts on a weekly basis. The faculty member could also post on the Tutor Talk topic for student assistance. Embedded tutor postings can be useful for increasing student engagement inside the classroom. The difference between Smarthinking Online Tutoring and local embedded tutoring is that the embedded model is ‘just in time’ tutoring that is responding to direct assignment questions in the transparent classroom environment where the professor also has the opportunity to engage in the student-tutor conversation. Because of the transparency that the discussion board location lends, posts can be viewed by all students in the classroom; and all students have an opportunity to benefit from the embedded tutor responses.

Embedded Tutor Posting Activities	Summer 2014	Fall 2014	Spring 2015	Total FY 2015
Total number of eCore Sections	74	163	204	441
Number of STEM and Spanish Sections	23	59	56	138
Embedded Tutor Posts only in the Tutor Talk Discussion Topics	324	821	769	1914
All Posts in Tutor Talk Discussion Topics	744	1884	1817	4445

FY 2015 Startup Outreach Activities

The following table represents the startup outreach activities for FY 2015. Students who have not logged into the course by Day 3 of class are contacted via phone and email. This activity is performed by the entire eCore team. Students who have not logged into the course by 12 Noon on Day 5 (the login deadline) and who may be in jeopardy of administrative withdrawal are notified that they have missed the login deadline with an opportunity to drop by the midnight deadline. The Day 5 activity is performed by the Student Success Team (SST). This activity is also performed as part of the Short Session II startup days in the middle of a long semester.

Startup Outreach Activity (Phone calls, emails)	Summer 2014	Fall 2014	Spring 2015	Total FY 2015
Total Enrollment for the Semester	2164	5237	6788	14189
Day 3: Students who have not logged in for Full, Short I and Short II Sessions				
Percent Enrollment Not Logged In	18.76%	22.13%	19.49%	20.35%
Enrollment Not Logged In	406	1159	1323	2888
Unduplicated Students Not Logged In	335	912	1060	2307
Day 5: Students who have not logged in for Full, Short I and Short II Sessions				
Percent Enrollment Not Logged In	8.92%	4.62%	2.87%	4.44%
Enrollment Not Logged In	193*	242	195	630
Unduplicated Students Not Logged In	157*	203	157	517

* In Summer 2014, all Day 5 missing students for all affiliates were contacted. In Fall 2014 and Spring 2015, only students from affiliates that administratively withdraw were contacted at Day 5.

DID YOU KNOW?

More than 9,100 outreach phone calls were made for Outreach activities in FY 2015:

- Not-Logged-In Day 3 (2307)
- Not-Logged-In Day 5 (517)
- At-Risk SEADS (4683)
- Withdrawals (1668)
- Total (9175)

FY 2015 Preemptive Outreach Activities

Beginning two weeks before classes start, eCore will begin distribution of the Welcome and Getting Started emails. Along with this activity, preemptive calling cycles begin as a secondary communication to a subset of the student base. Students who are in a high number of eCore classes are contacted before classes begin so that registration can be confirmed, student success tips can be provided, and any questions can be answered. The preemptive cycle may also include students who are pre-identified by either the eCore affiliate or prior eCore participation. If time allows, new affiliate students with smaller enrollment are also included in the call cycle.

The purpose of the preemptive calling activities is to make a connection with a student before classes begin, in hopes of triggering early engagement that continues until the end of the semester. The Welcome and Getting Started email includes GoView login instructions as well as other startup activities, and the preemptive calls attempt to reinforce the welcome message and encourage students to begin working on the GoVIEW platform and in the eCore Connection in preparation for Day 1 of classes.

The following table represents the preemptive outreach activities for FY 2015.

Preemptive Outreach Activity (Phone calls)	Summer 2014	Fall 2014	Spring 2015	Total FY 2015
Total Enrollment for the Semester	2164	5237	6788	14189
Identified preemptive student enrollment	229	933	1545	2707
Identified preemptive students	72	513	720	1305

Saving Our Students (SOS)

FY 2015 In-Term Outreach Activities

The following table represents the in-term outreach activities for FY 2015. Faculty used SEADS (Student Engagement and Advancement Data System) to report students in need of intervention. The Student Success Team (SST) contacts the student within 2-3 business days, often within one business day, by phone call or email. The loop is closed when faculty receive follow-up from the SST. Withdrawing students complete a request and survey form, and the Student Success Team contacts each withdrawing student within 48 business hours to help the student make an informed decision. Beginning in Spring 2015, eCore students may submit the withdrawal via an eCore student portal. This provides the students with an opportunity to cancel the withdrawal on their own, within the 48 business hour window.

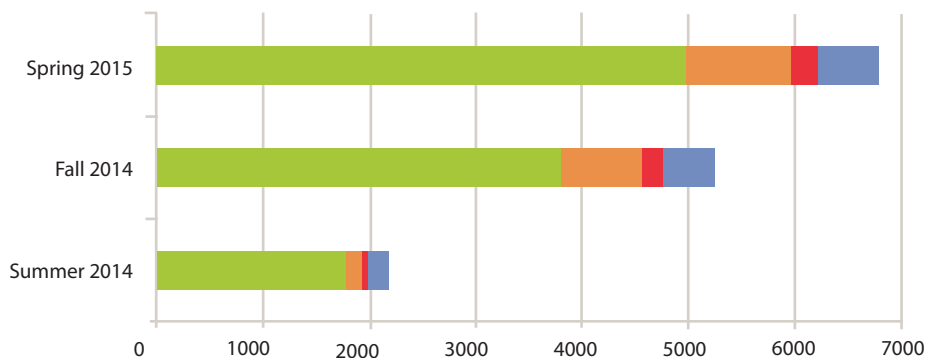
Another outbound activity is contacting students who have missed proctored exam scheduling and appointments. Please see the Testing Information section of this fact book for more information.

In-Term Outreach Activity (Phone calls, emails)	Summer 2014	Fall 2014	Spring 2015	Total FY 2015
Total Enrollment for the Semester	2164	5237	6788	14189
SEADS Entries (* can be multiple entries per student, across the term)	363	1930	2390	4683
Withdrawing Students	210	699	759	1668

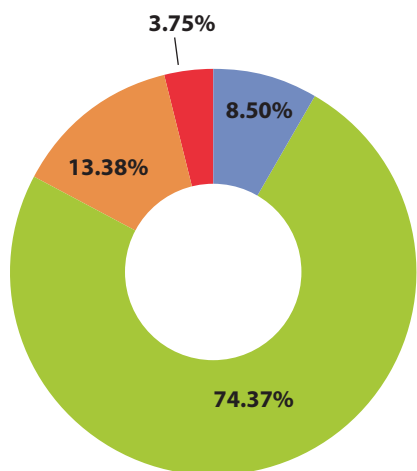
SEADS - Course Completion by Term

Fall 2014 had the largest percentage of enrollment reported in SEADS for outreach intervention (18.75%)

Summer 2014 had the lowest percentage of enrollment reported in SEADS for outreach intervention (9.47%)



	Summer 2014	Fall 2014	Spring 2015
Completed Course, not reported in SEADS (10,553)	1776	3805	4972
Completed Course, reported in SEADS (1,898)	164	744	990
Did not complete Course (Withdraw) reported in SEADS (532)	41	238	253
Did not Complete Course (Withdraw), not reported in SEADS (1,206)	183	450	573



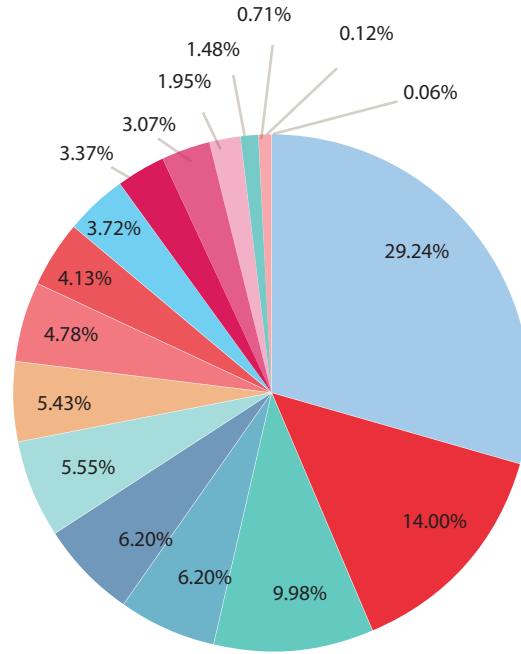
- Completed Course, not reported in SEADS (10,553)
- Completed Course, reported in SEADS (1898)
- Did not Complete Course (Withdraw), reported in SEADS (532)
- Did not Complete Course (Withdraw), not reported in SEADS (1206)

Student Withdrawal Survey

Withdrawal Reasons

Primary Reason: Personal Life-Related Issue, Time Impact Job, personal obligations (29.24%)

Secondary Reason: Course-Related Issue – Prefer a campus face-to-face class (14.00%)



- Personal Life-Related Issue: Time Impact (Job personal obligations) [29.24%]
- Course-Related Issue: Prefer a campus face-to-face class [14.00%]
- Personal Life-Related Issue: Family Life Obligations [9.98%]
- Personal Life-Related Issue: Illness [6.20%]
- Personal Life-Related Issue: Job Obligations [6.20%]
- Personal Life-Related Issue: Finances [5.55%]
- Course-Related Issue: Time Management (difficulty staying on schedule) [5.43%]
- Course-Related Issue: Reason Not Listed [4.78%]
- Course-Related Issue: Need more individual attention [4.13%]
- Personal Life-Related Issue: Reason Not Listed [3.72%]
- Course-Related Issue: Grade Issue [3.37%]
- Course-Related Issue: Difficulty connecting to course [3.07%]
- Course-Related Issue: Difficult to follow instructions [1.95%]
- Personal Life-Related Issue: Moving [1.48%]
- Course-Related Issue: Academic Advising (Pre-requisite issue) [0.71%]
- No Reason Specified [0.12%]
- Course-Related Issue: Computer Skills [0.06%]

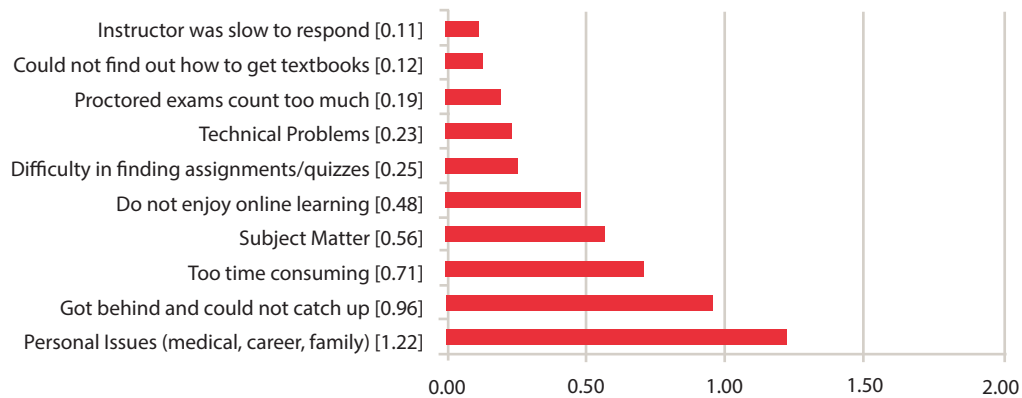
Withdrawal Factors

(0 = No Impact, 1 = Somewhat an Impact, and 2 = Significant Impact)

Primary factor: Personal issues (medical, career, family) (1.22)

Secondary factor: Got behind and could not catch up (0.96)

Least factor: Instructor was slow to respond (0.11)



Withdrawal Experiences

Likert Scale: 1 - Strongly Disagree, 2 - Disagree, 3 - Agree, 4 - Strongly Agree

Respondents could choose Not Applicable and Don't Know, which were excluded from the Likert calculations.

Most Strongly Agree Experience: It was difficult for me to locate assignments and other materials in the course (2.19)

Second Most Strongly Agree Experience: Information regarding due dates was easy to find (2.17)

Most Strongly Disagree Experience: The proctored exams counted too much toward the total grade (1.84)

The Experience with the most Don't Know or Not Applicable: The proctored exams counted too much toward the total grade (n = 471)

