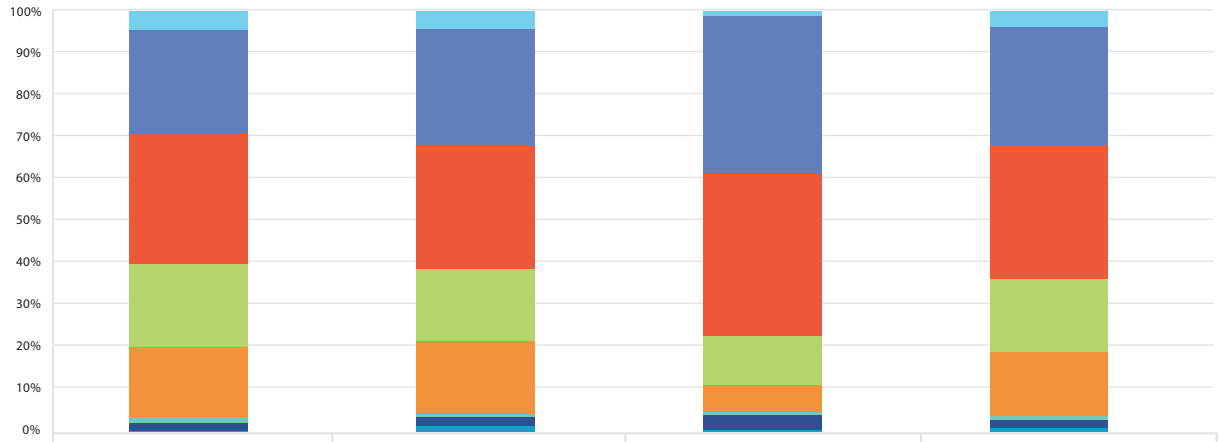


## Class of eCore Students

The following chart shows the classification of eCore students for FY 2016. These data were provided by USG.  
 \*Identified data not represented at institution level because the eCore enrollment was for 9 or fewer students.



	Comprehensive Universities	State Universities	State Colleges	FY 2016 Total
Unclassified-MOWR	292	255	26	573
Freshman	1656	1707	993	4356
Sophomore	2071	1800	1021	4892
Junior	1328	1054	314	2696
Senior	1119	1052	170	2341
Graduate or Other	94	60	25	179
Unclassified-Transient	119	127	82	328
Unknown	30	91	21	142
Total	6709	6146	2652	15507

## Class of eCore Students - Continued

Institution	Unclassified-MOWR	Freshman	Sophomore	Junior	Senior	Graduate or Other	Unclassified-Transient	Unknown	Total
<b>Comprehensive Universities</b>									
<b>GSOU</b>	*	86	170	51	51	*	*	*	372
<b>KSU</b>	*	385	481	487	469	16	16	10	1868
<b>UWG</b>	280	839	949	392	303	41	65	13	2882
<b>VSU</b>	*	346	471	398	296	31	38	*	1587
<b>State Universities</b>									
<b>AASU</b>	*	14	23	10	23	*	*	12	91
<b>ASU</b>	*	32	86	45	51	*	*	*	214
<b>CLSU</b>	98	132	187	178	147	*	34	*	783
<b>CSU</b>	*	116	239	200	319	19	*	*	901
<b>FVSU</b>	36	67	120	102	138	*	*	*	468
<b>GSW</b>	*	17	35	29	30	*	*	*	113
<b>MGSU</b>	10	146	150	89	81	*	18	*	498
<b>SSU</b>	11	93	149	92	92	*	*	*	454
<b>UNG</b>	97	1090	811	309	171	21	61	64	2624
<b>State Colleges</b>									
<b>ABAC</b>	*	150	135	68	26	*	10	*	393
<b>AMSC</b>	*	29	34	*	*	*	*	*	83
<b>BSC</b>	*	*	18	*	*	*	*	*	24
<b>CCGA</b>	*	165	157	34	29	*	10	*	413
<b>DAR</b>	*	17	56	*	*	*	12	*	90
<b>DSC</b>	*	196	173	118	74	*	12	*	578
<b>EGC</b>	*	*	*	*	*	*	*	*	13
<b>GGC</b>	*	48	27	14	13	*	*	*	106
<b>GHC</b>	*	255	281	*	*	*	31	*	581
<b>GOC</b>	11	107	109	55	22	*	*	*	307
<b>SGSC</b>	*	15	25	15	*	*	*	*	64
<b>Total</b>	<b>573</b>	<b>4356</b>	<b>4892</b>	<b>2696</b>	<b>2341</b>	<b>179</b>	<b>328</b>	<b>142</b>	<b>15507</b>